

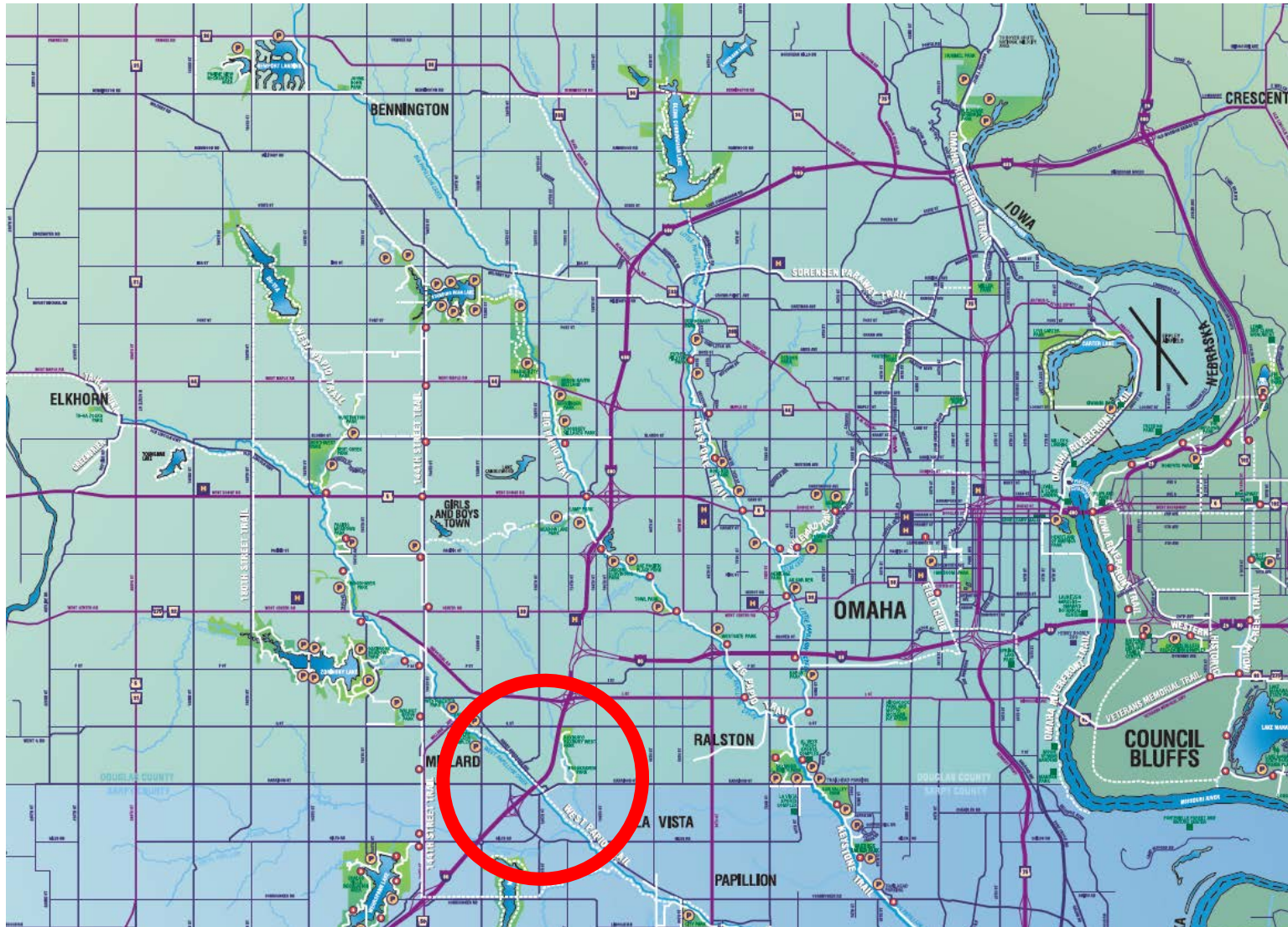
West Papio Trail, Giles to Millard

Public Information Meeting

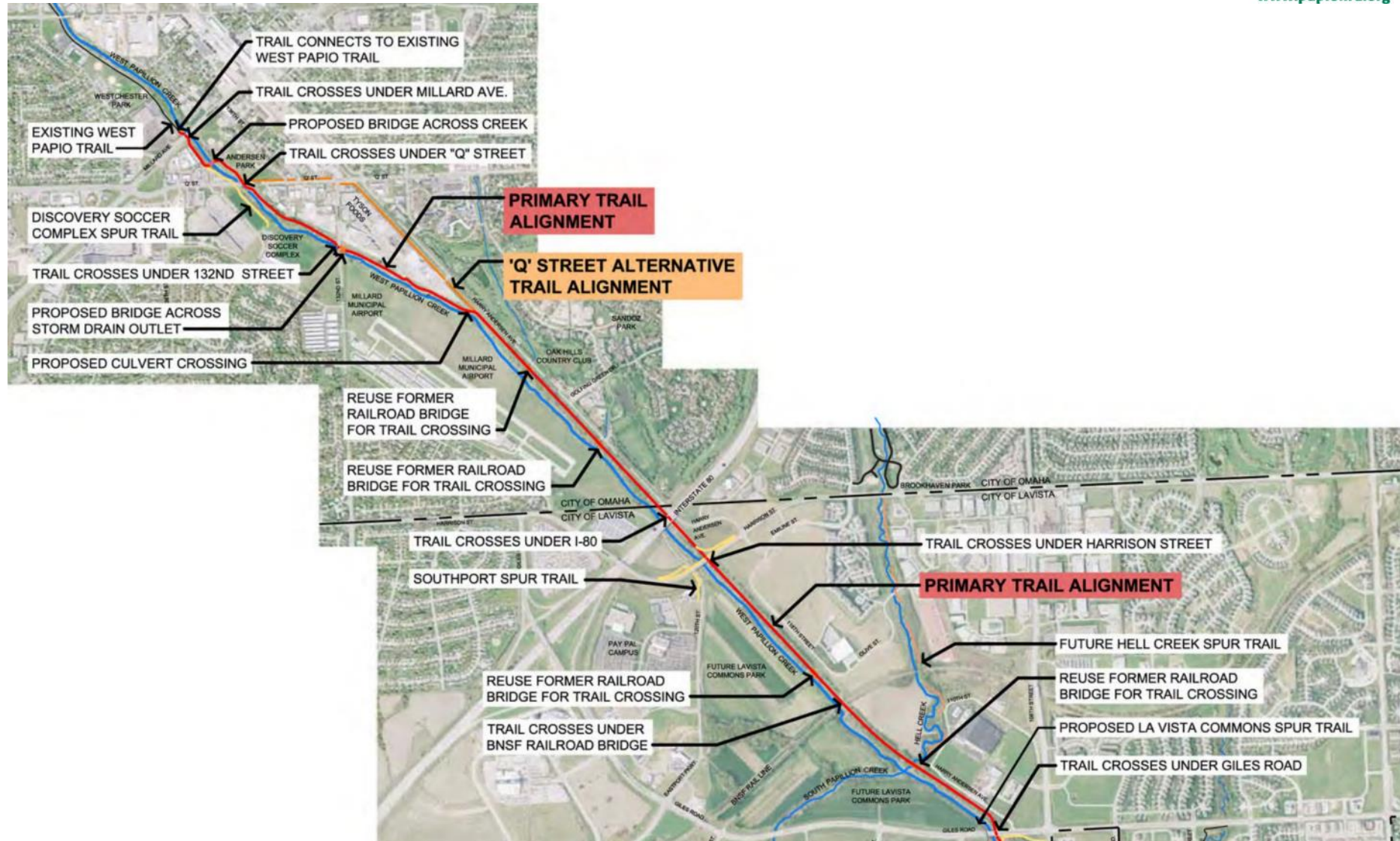
2017-03-14



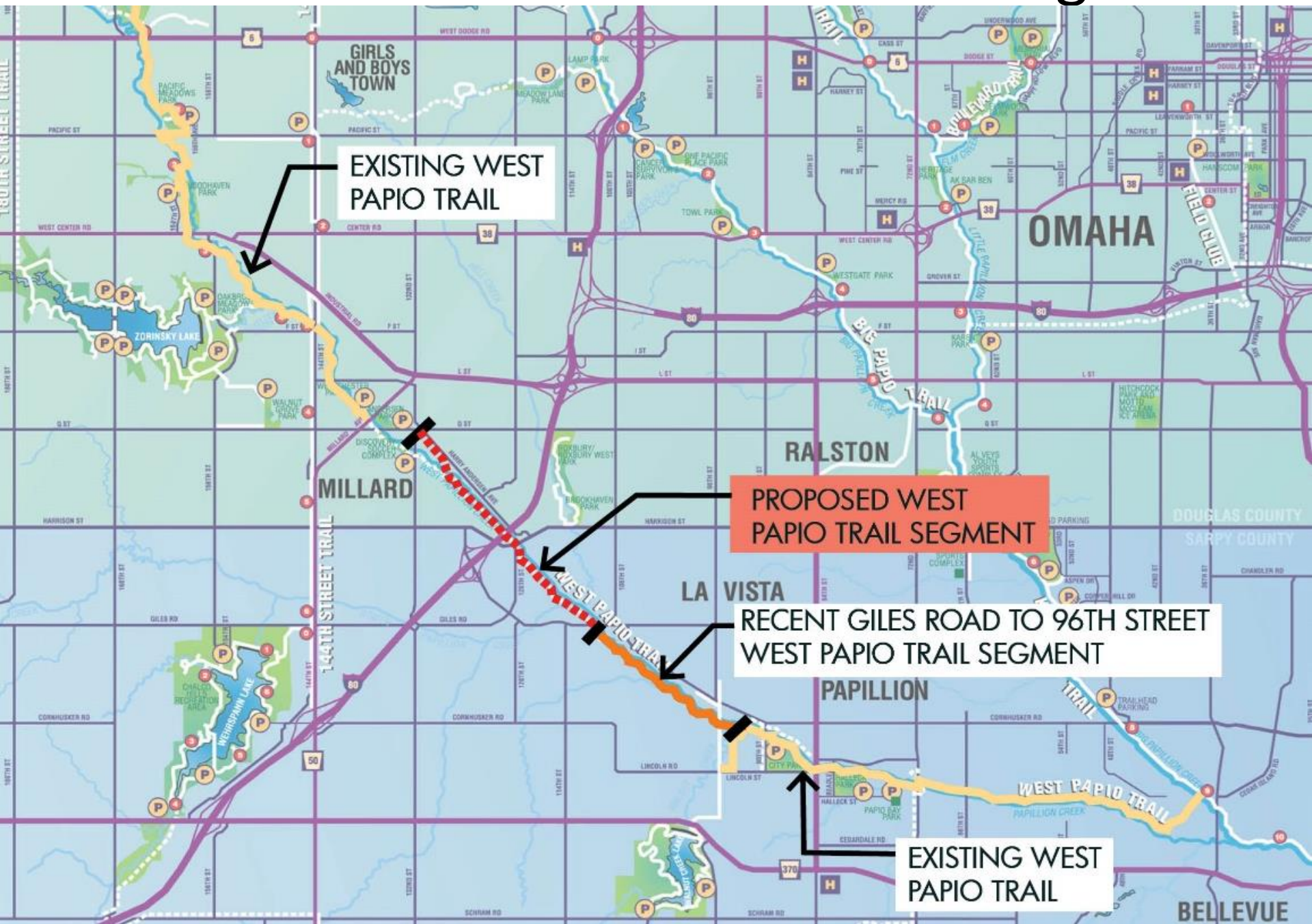
Metro Area Trails Map



Giles Road to 132nd & "Q" St



108th and Giles to 96th Street Trail Segment



Existing Conditions

- Original UP Transcontinental Railroad



Existing Conditions

- Historic elements are being preserved
- Developed tree canopy



Giles Road to 132nd & "Q" Street





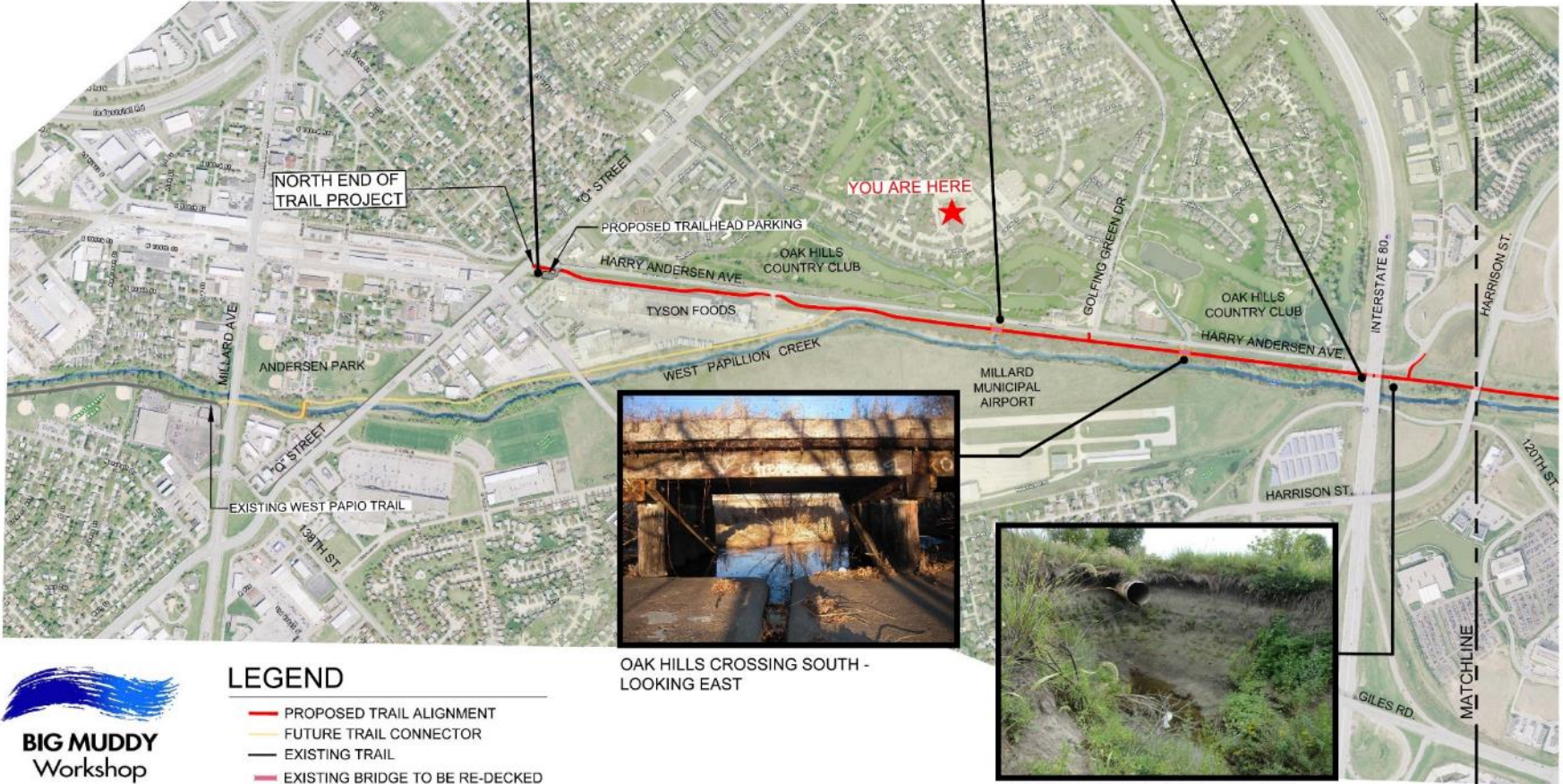
"Q" STREET TRAILHEAD -
LOOKING SOUTH



OAK HILLS CROSSING NORTH -
LOOKING WEST



I-80 UNDERPASS -
LOOKING SOUTH



OAK HILLS CROSSING SOUTH -
LOOKING EAST



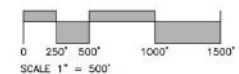
SOUTH I-80 STORM IMPROVEMENTS -
LOOKING SOUTHEAST



LEGEND

- PROPOSED TRAIL ALIGNMENT
- FUTURE TRAIL CONNECTOR
- EXISTING TRAIL
- EXISTING BRIDGE TO BE RE-DECKED
- PROTECTION STRUCTURE
- STREAM

WEST PAPIO TRAIL - GILES ROAD TO MILLARD - NORTH





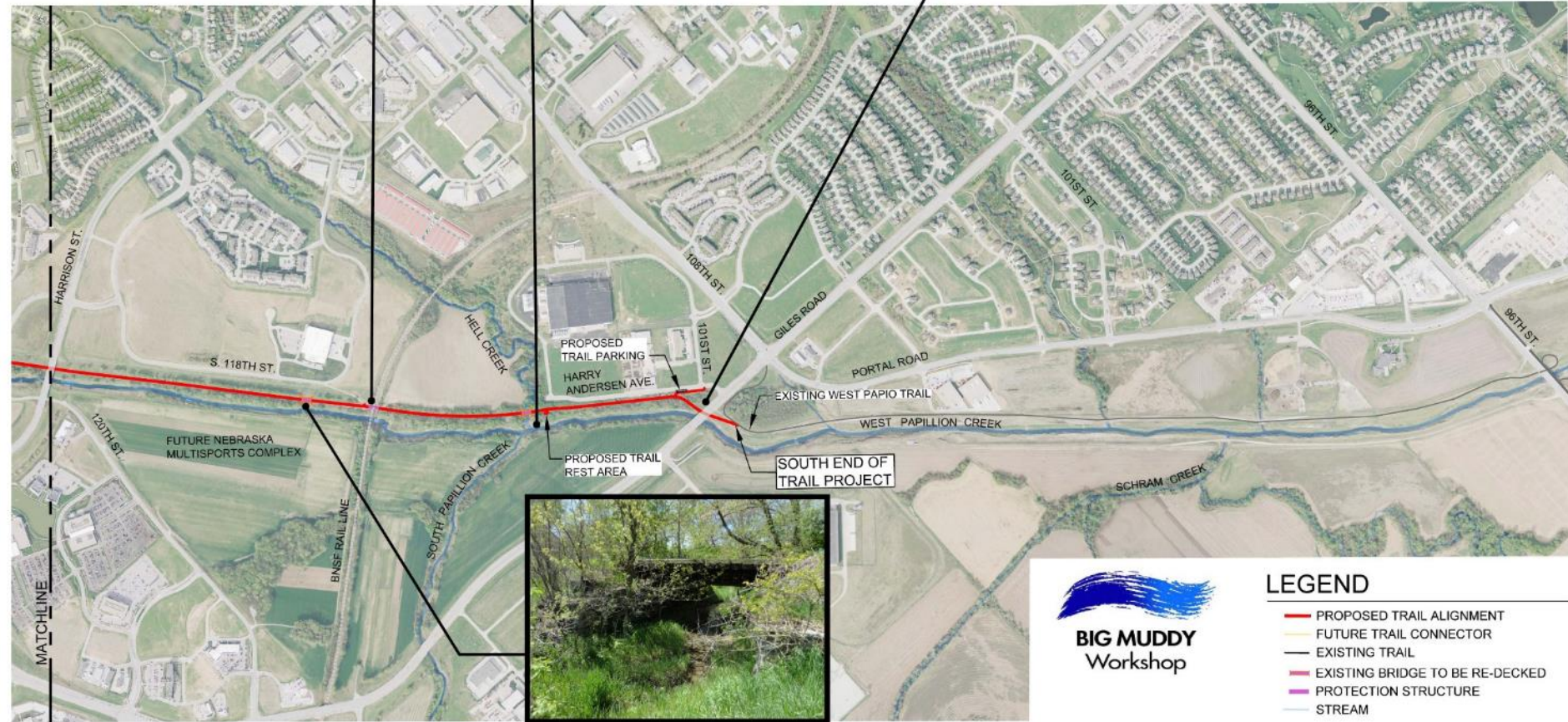
BNSF UNDERPASS -
LOOKING SOUTH



HELL CREEK BRIDGE -
LOOKING EAST



GILES ROAD BRIDGE UNDERPASS -
LOOKING SOUTH

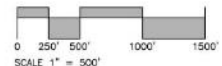


HARRISON SOUTH BRIDGE -
LOOKING EAST



LEGEND

- PROPOSED TRAIL ALIGNMENT
- FUTURE TRAIL CONNECTOR
- EXISTING TRAIL
- EXISTING BRIDGE TO BE RE-DECKED
- PROTECTION STRUCTURE
- STREAM



WEST PAPIO TRAIL - GILES ROAD TO MILLARD - SOUTH

Questions?



Eric Williams

Natural Resources Planner

EWilliams@PapioNRD.org

(402) 444-6222

Brian Pecka

Senior Project Manager

BPeck@BigMuddyWorkshop.com

(402) 344-8711