

Agenda Item: 6.

MEMORANDUM

TO: Programs, Projects & Operations Subcommittee

FROM: Amanda Grint, Water Resources Engineer

SUBJECT: Interlocal Agreement with the City of Gretna on Sanitary Sewer Main Extension around the WP2 Project

DATE: December 8, 2017

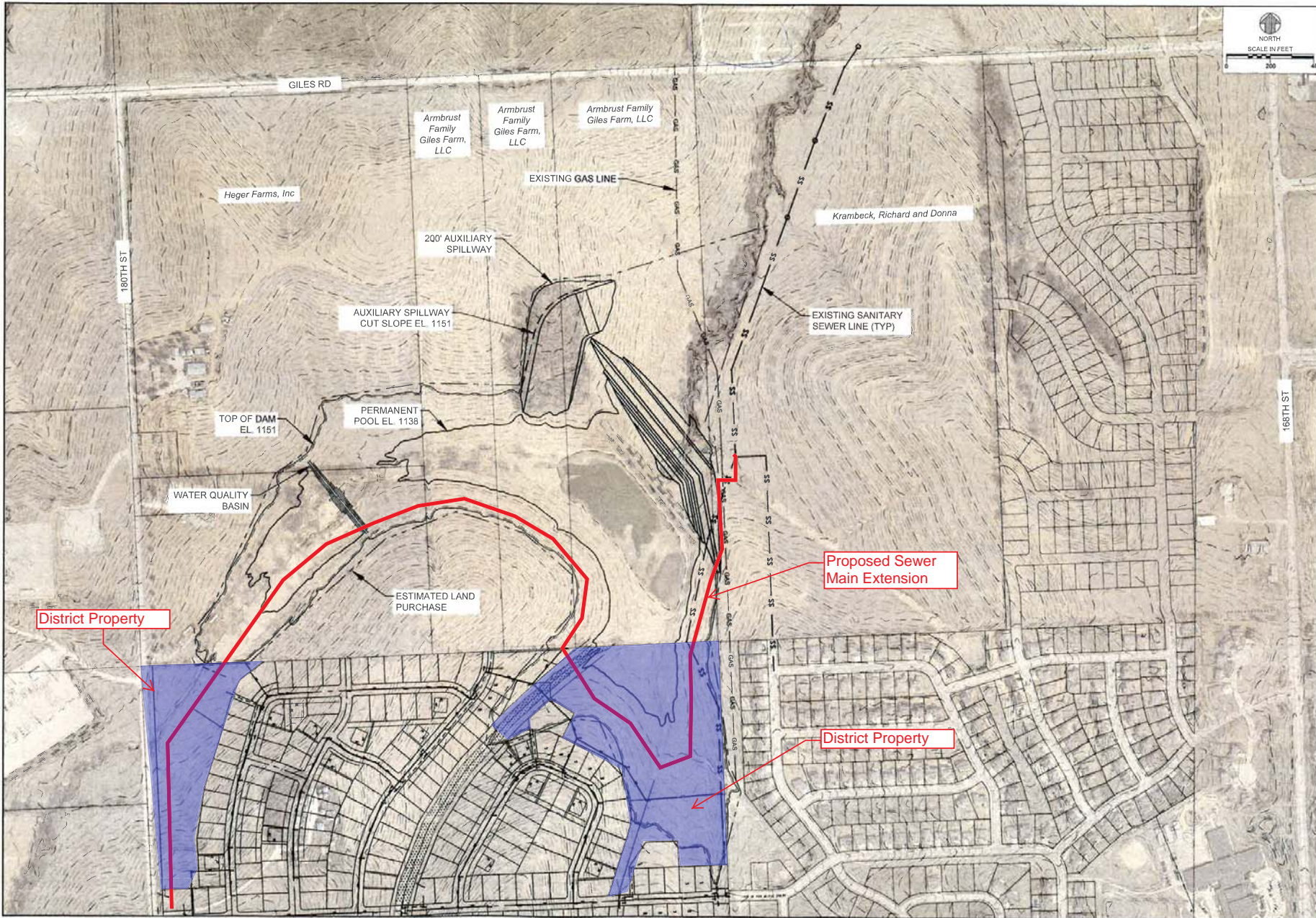
The District has coordinated with the City of Gretna on the preliminary design of the WP2 project, located near 180th and Giles Road. The City has an ongoing responsibility to extend a sanitary sewer main through this area for new upstream development. The original plan for the sewer main had to be realigned due to the information discovered in the preliminary design of WP2, specifically the geotechnical analysis and the auxiliary spillway configuration. Therefore, an interlocal agreement is recommended to address the realignment of the sewer main around the WP2 project and the added costs to the City. The attached map shows the proposed WP2 project and the proposed sewer alignment.

The following is a summary of the provisions in the agreement:

- The City of Gretna would design, bid and build the sewer.
- The City of Gretna would obtain any right of way necessary for the sanitary sewer.
- Upstream of the proposed dam, the sewer main and manholes will be located above the proposed 100-year pool elevation of the WP2 project.
- The District will reimburse the actual cost of the additional length of sewer to realign around the south side of the dam.
- The District will reimburse the actual cost of providing a casing pipe for the sewer main through the dam embankment.
- The District will provide temporary construction and permanent sewer easements at no cost to the City for the sewer main through the District property being acquired in the Palisades West area from Celebrity Homes, Inc.

The estimated cost is approximately \$300,000 for the items that are the District's responsibility. This is anticipated to be paid from the Watershed Fund balance.

Staff recommends that the Subcommittee recommend to the Board that the General Manager be authorized to execute an interlocal agreement with the City of Gretna for the WP2 Sanitary Sewer Main Extension project up to a maximum amount of \$300,000 subject to changes deemed necessary by the General Manager and approval as to form by District Legal Counsel.

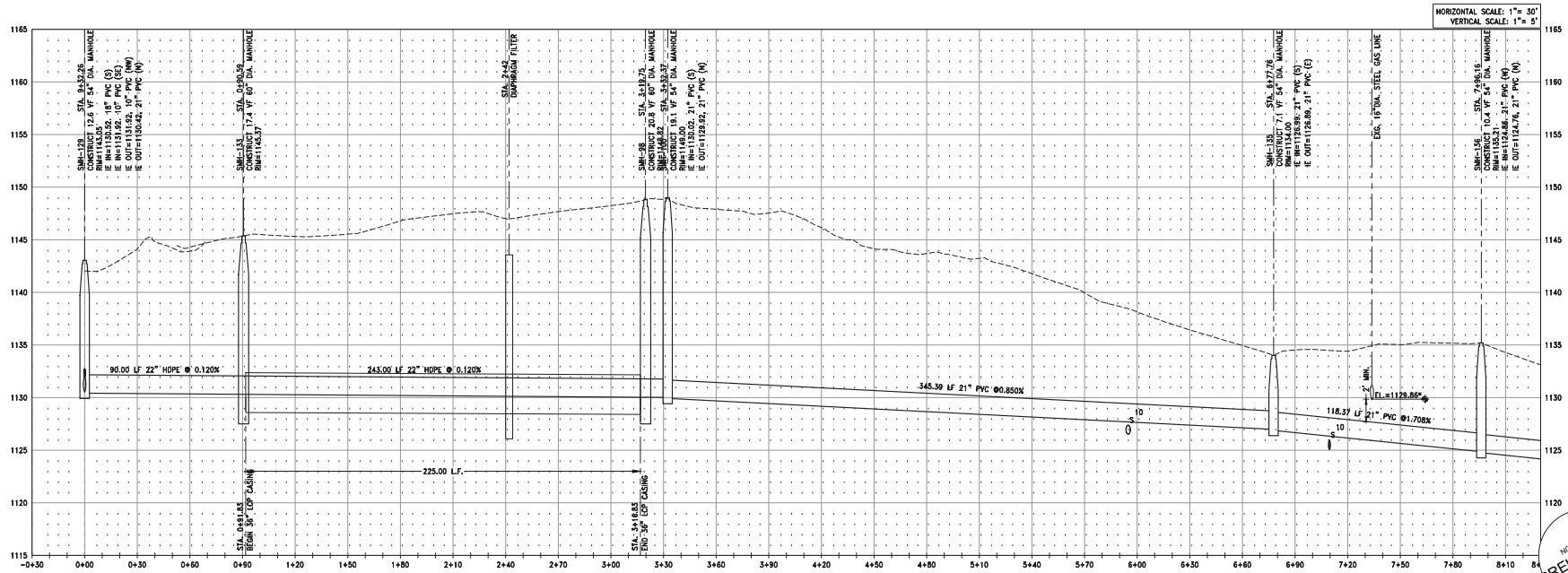
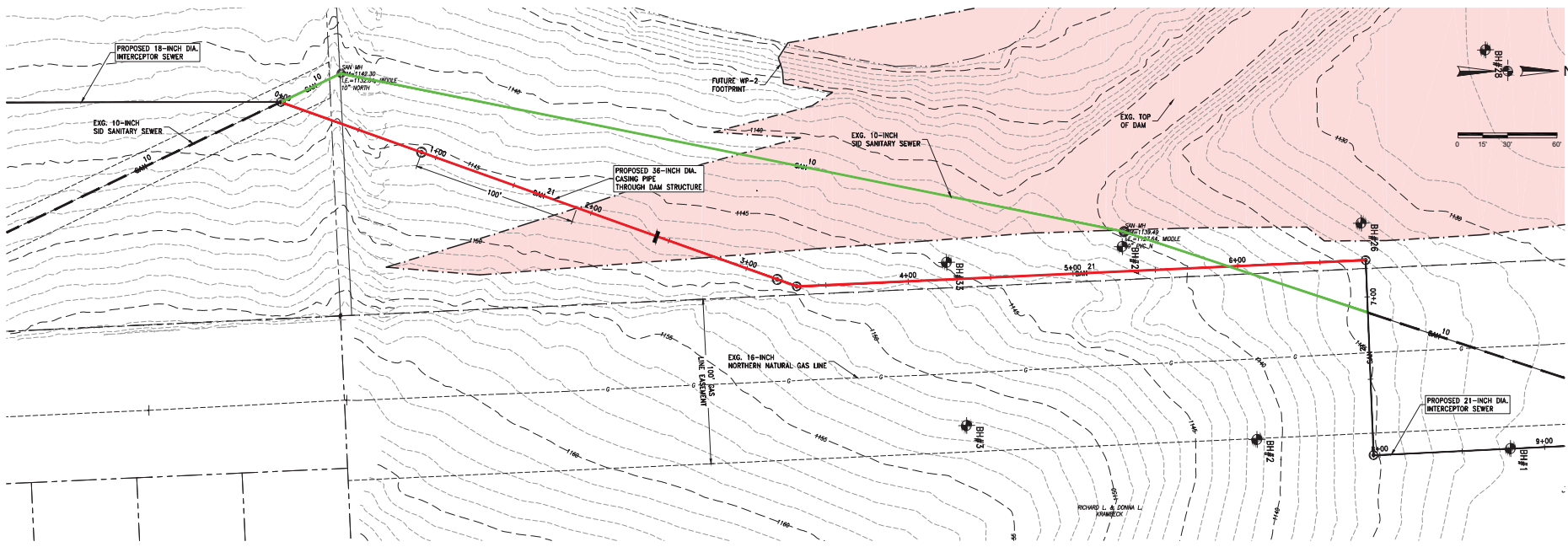


NO.	REVISIONS	BY	DATE

WP-2 OFFSET 200 FT DOWNSTREAM
 PAPIO-MISSOURI RIVER
 NATURAL RESOURCES DISTRICT
 SARP COUNTY, NEBRASKA
 2017

DESIGNED BY: _____
 DRAWN BY: _____
 CHECKED BY: _____
 DATE: _____

PROJECT: C:\Users\jshank\Documents\17050 15.6.17.dwg - 1.dwg (print - 24x36) (Plot Date: 12/28/2017 11:30 AM)



SHEET NO.
1 of 1

PROJECT NO.
17050-02
DATE
DEC. 8, 2017

21-INCH INTERCEPTOR SEWER
PLAN & PROFILE
STA. 0+00 TO STA. 7+96.16

DESIGNED BY:
CHECKED BY:
DRAWN BY:

TIBURON SUB-BASIN INTERCEPTOR
SEWER - PHASE 2A
GRETNA, NEBRASKA

REVISIONS

OLMSTED & PERRY
CONSULTING ENGINEERS INC.
10730 PACIFIC STREET
SUITE 232
OMAHA, NEBRASKA

