

Agenda Item: 7.

MEMORANDUM

TO: Programs, Projects & Operations Subcommittee

FROM: Amanda Grint, Water Resources Engineer

SUBJECT: Amendment to Interlocal Agreement with the City of Gretna on Sanitary Sewer Main Extension around the WP2 Project

DATE: February 27, 2018

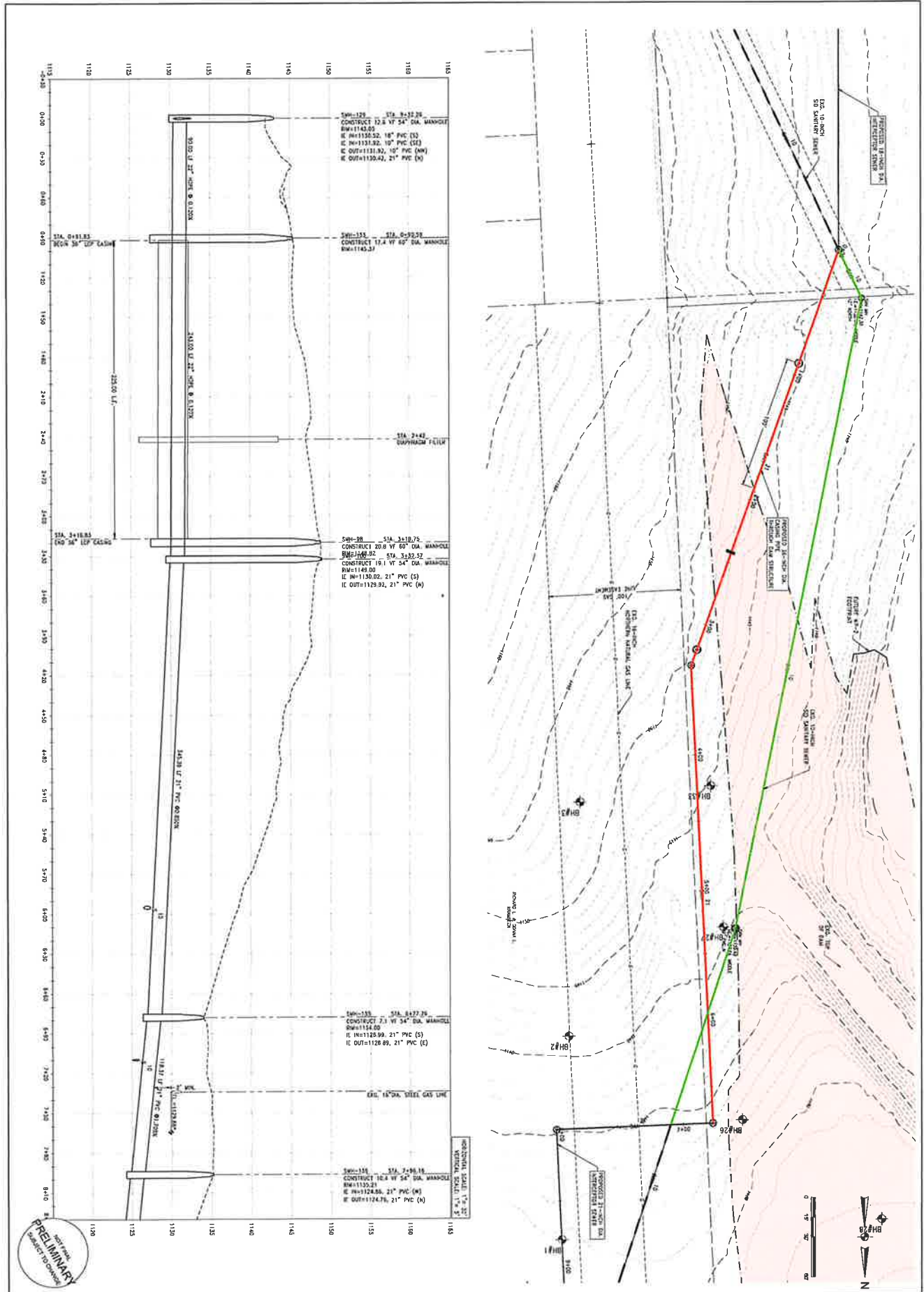
---

The District has coordinated with the City of Gretna on the preliminary design of the WP2 project, located near 180<sup>th</sup> and Giles Road. In December 2017, the Board approved an interlocal agreement to cost share on an extended sanitary sewer main through the WP2 project area for new upstream development. The interlocal provided that the District would pay the added costs to the City for the rerouting around the WP2 dam and associated costs. The attached map shows the proposed WP2 project and the proposed sewer alignment.

The estimated cost and maximum District contribution was set at \$300,000 in the interlocal agreement. Bids were received by the City of Gretna in January and the low bid was higher than estimated. After review, the City is planning to accept the low bid which results in an amendment to the interlocal agreement. The proposed amendment addresses the higher cost of items that were determined to be the District's responsibility up to a maximum of \$370,000.

**Staff recommends that the Subcommittee recommend to the Board that the General Manager be authorized to execute an amendment to the interlocal agreement with the City of Gretna for the WP2 Sanitary Sewer Main Extension project up to a maximum amount of \$370,000 subject to changes deemed necessary by the General Manager and approval as to form by District Legal Counsel.**





**PRELIMINARY**  
 NOT FOR CONSTRUCTION

SHEET NO. 1 of 1	PROJECT NO. 17050-02 DATE DEC. 8, 2017	21-INCH INTERCEPTOR SEWER PLAN & PROFILE STA. 0+00 TO STA. 7+96.16	DESIGNED BY: JFZ CHECKED BY: SWP DRAWN BY: JFZ	TIBURON SUB-BASIN INTERCEPTOR SEWER - PHASE 2A GRETNA, NEBRASKA	REVISIONS _____ _____ _____	OLMSTED & PERRY CONSULTING ENGINEERS INC. 10730 PACIFIC STREET SUITE 232 OMAHA, NEBRASKA
---------------------	---	--	---	---	--------------------------------------	---