

MEMORANDUM

TO: Programs, Projects, and Operations Subcommittee
FROM: Eric Williams, Natural Resources Planner
SUBJECT: City of Bellevue, B-Cycle Program
DATE: August 2, 2018

The District has received the attached July 18, 2018 letter requesting cost share assistance to the City of Bellevue for their planned Bellevue B-Cycle program, to install bicycle sharing at two locations along the trail system. The equipment would be operated by the nonprofit Heartland B-Cycle, who has installed and currently operates nearly three dozen other stations with around 200 bicycles as part of an expanding network across the metro area. The new facilities would be located at Haworth Park on the Bellevue Loop Trail, and the 36th Street trailhead near Culvers on the West Papio Trail. This program is planned to include 17 bicycles.

This program is designed to use the new B-Cycle “Dash” bikes, which is a “smart bike” including a touchscreen, Bluetooth connectivity, and onboard GPS. The Dash bikes are designed to offer additional flexibility compared to the current docking stations. GPS and the B-Cycle phone app will allow the bikes to be available from, and returned to, any location rather than the single station. A user would locate the bike on their phone, check out the bike, ride to their destination, and then re-lock the bike using the phone app.

A docking station with 8 bikes was installed at Chalco Hills as a destination-recreation facility for park guests. This location is not currently close enough to other stations for one-way trips to be expected, but instead the bike are used for recreation on the trail around Wehrspann Lake. In the first year, this station has been extremely successful, and has shown that bicycle sharing for recreation on trails at natural resource facilities is very popular with residents and visitors in our community.

The proposed Bellevue B-Cycle program would expand these opportunities along trails constructed and maintained by the District. Future plans for additional stations near trails, and at recreation areas are being considered in order to continue expanding the bicycle sharing network.

- **It is recommended that the Subcommittee recommend to the Board that the District fund half the cost of the Bellevue B-Cycle program in FY 2019 up to a maximum District contribution of \$21,500.**



CITY OF BELLEVUE

OFFICE OF THE MAYOR

210 W. Mission Avenue – Bellevue, NE 68005 – (402) 293-3022

July 18, 2018

John Winkler, General Manager
Papio-Missouri River NRD
8901 South 154th Street
Omaha, NE 68138

RE: BELLEVUE B-CYCLE

Dear Mr. Winkler,

The Bellevue B-Cycle project aims to locate bicycle sharing stations at two points along the trail system: 1) Haworth Park along the Bellevue Loop Trail, and 2) the 36th Street trailhead near mile marker 9 along the West Papio Trail.

In recent years, bicycle sharing has emerged as a popular trend with a positive environmental impact. In order to conserve our natural resources, active transportation and recreational opportunities such as bicycle sharing should be encouraged. It is the City of Bellevue's intent to do that as part of our existing Complete Streets policy.

Near the convergence of the West Papio and Keystone Trails (commonly known as the "Culver's trailhead"), there are many opportunities to encourage cycling and trail use. There are several hotels, apartments, and businesses located in close proximity. Haworth Park along the Missouri River is a popular camping destination. Bicycle sharing would help attract visitors and enrich these recreational areas. Bicycle sharing in these areas would enhance the recreational area by promoting trail use and providing another recreational opportunity for those people who would not otherwise have a chance to do so. This is particularly true for those staying in nearby hotels or visiting the area from out of town. Cycling is a great way to utilize the trail system and enjoy the natural resources in our community.

The City of Bellevue would partner with Heartland B-Cycle for its bicycle sharing program. Heartland B-Cycle has 35 stations with 199 bicycles currently in the metro area. Additionally, there are two existing B-Cycle stations along the West Papio Trail: one in First Street Plaza in Papillion, and one at the Chalco Hills Recreation Area. The proposed Bellevue B-Cycle locations could provide long term connections along the West Papio corridor.

Heartland B-Cycle has proposed the B-Cycle Dash bicycles for the Bellevue project. The Dash model is B-Cycle's first connected smart bike, incorporating a color touchscreen display. The Dash features an integrated locking package and onboard GPS. Fixed infrastructure for docking purposes would be present at both proposed locations for the Dash bicycles. The total launch cost is \$42,845. The attached estimate from B-Cycle is to purchase seventeen bicycles, and includes activation fees.

The City of Bellevue would look to implement the B-Cycle bike share locations in spring 2019. Exact timing will depend on the weather; however, it is reasonable to anticipate the stations would be set up and active in March 2019.

I would respectfully request the Papio-Missouri River NRD consider funding half of the Bellevue B-Cycle project in its FY 2019 budget, up to a maximum of \$21,500 with final reimbursement request to be submitted after the project is completed. This project will benefit both the city and the Papio-Missouri River NRD on many levels.

Thank you for your consideration.

Sincerely,

A handwritten signature in black ink that reads "Rita Sanders". The signature is fluid and cursive, with the first name "Rita" and the last name "Sanders" clearly legible.

Mayor Rita Sanders



An Equal Opportunity/Affirmative Action Employer



City of Bellevue
Planning Department
1510 Wall Street ▪ Bellevue, Nebraska 68005
(402) 293-3026

Bellevue B-Cycle Implementation Schedule

- October 2018:
 - B-Cycle Dash products will be ordered through Heartland B-Cycle
 - Station Hosting Agreement to be signed between Heartland B-Cycle and the City of Bellevue
- November 2018 through January 2019:
 - Heartland B-Cycle will assemble and activate the B-Cycle Dash bicycles
- March 2019:
 - B-Cycles will be placed at the proposed locations



CONFIDENTIAL QUOTE

03/01/18

Bellevue, NE

BCYCLE DASH BIKES	Unit Price	QTY	Total
Bikes (8 speed)	\$ 2,395	17	\$ 40,715
Bike Total:			\$ 40,715
Equipment Total:			\$ 40,715

Additional Equipment and Fees	Unit Price	QTY	Total
ONE-TIME SOFTWARE DESIGN FEE	\$ 7,500	1	Waived
ONE-TIME BIKE ACTIVATION FEE (per bike)	\$ 40	17	\$ 680
SHIPPING AND HANDLING			
-Dash Bike shipping (estimated)	\$ 850	1	\$ 850
INSTALLATION TRAVEL EXPENSES	\$ 600	1	\$ 600
Additional Equipment and Fees Total:			\$ 2,130

TOTAL LAUNCH COSTS: \$ 42,845

***50% Deposit: \$ 21,423**

Deposit is based on above configurations. Final Payment will be adjusted based upon final order and installation.

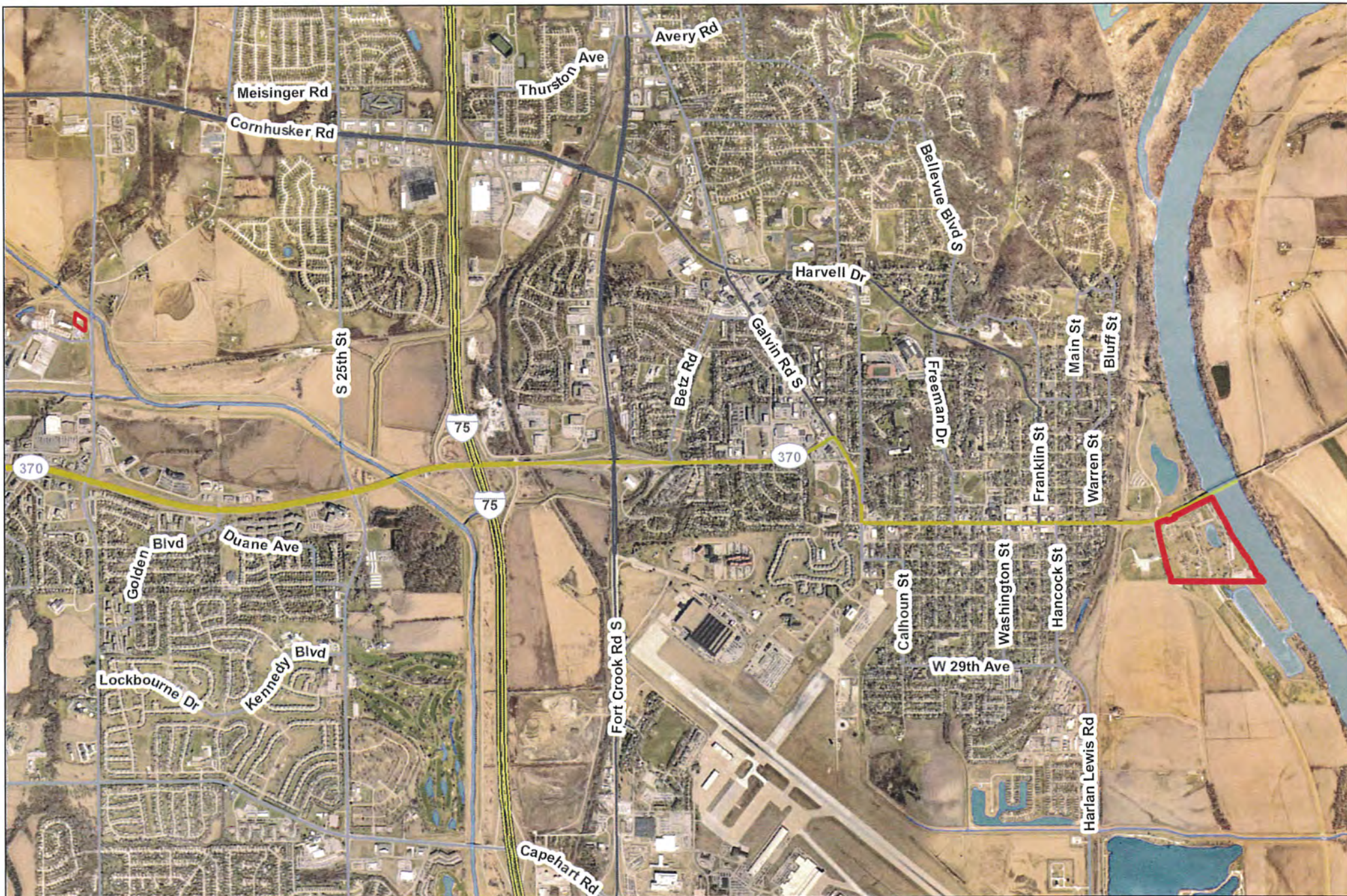
ONGOING OPERATIONAL EXPENSES	Unit Price	QTY	Total
Annual Bike Software and Connectivity Fee (per bike)	\$ 200	17	\$ 3,400

-Prices valid for 30 days.

-Quote valid for current configuration only.

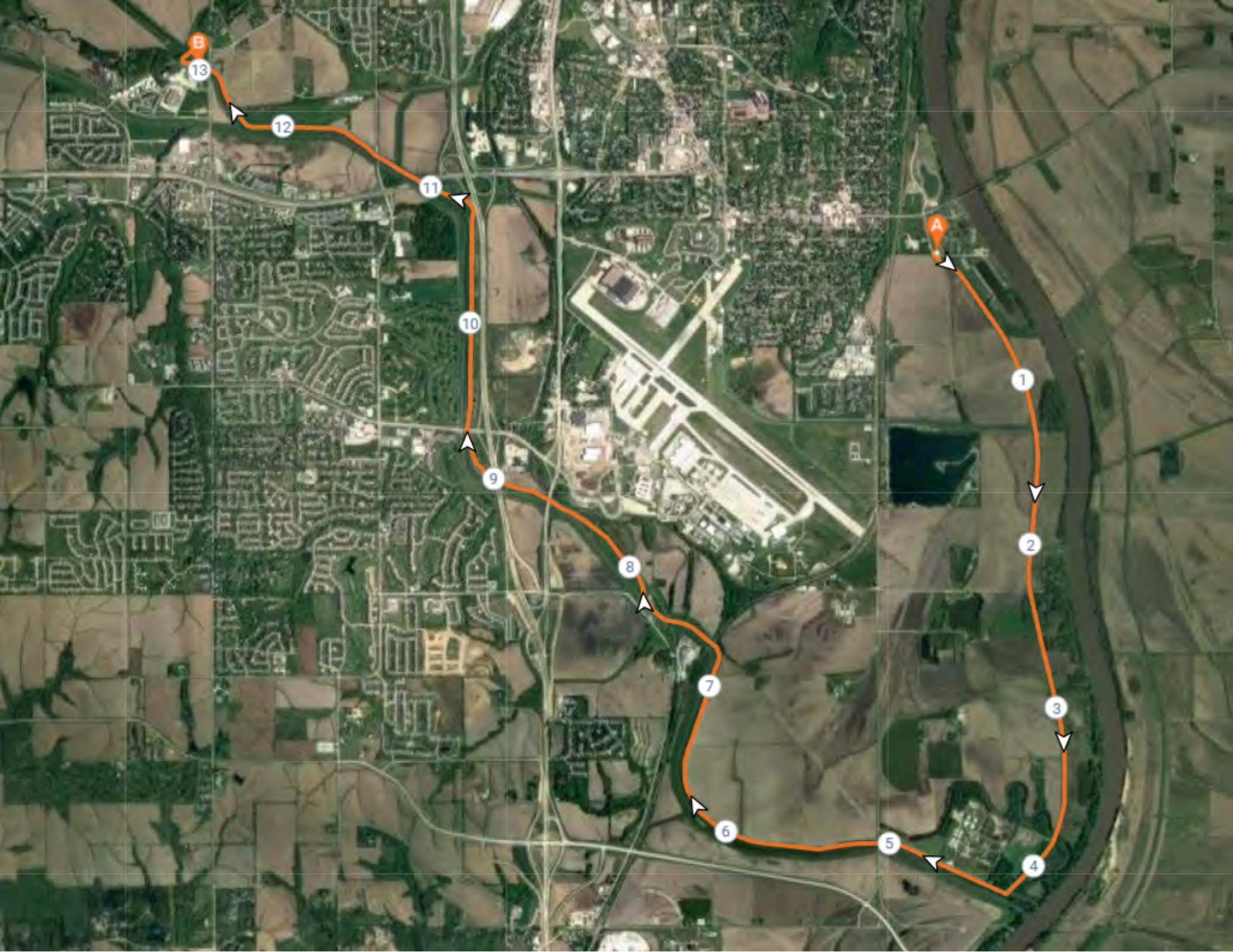
-Shipping and travel charges estimated. Actual charges finalized upon delivery.

-1 year warranty on station parts, 1 year warranty on bike parts, 3 year warranty on bike frames.



Bellevue B - cycle Locations 36th St & Haworth Park





B

13

12

11

10

9

8

7

6

5

1

2

3

4

A