

## MEMORANDUM

TO: Programs, Projects and Operations Subcommittee

FROM: Martin P. Cleveland, Construction Engineer

SUBJECT: Papio Watershed Structures D-17 and D-18 Front Berm Stabilization Project Bids

DATE: November 1, 2019

---

The Papio Watershed Structures D-17 and D-18 Front Berm Stabilization Project is located near 144<sup>th</sup> and Ida Street (D-17) and 144<sup>th</sup> and Fort Street (D-18). D-17 was built in 1995 and D-18 was built in 1990 by the Natural Resources Conservation Service (NRCS) as grade stabilization and sediment retention structures in NRCS PL566 program, upstream of Corps of Engineers Standing Bear Lake (Papio Creek Watershed Dam Site 16).

The District is the local sponsor of D-17 and D-18 and is required by a NRCS cooperation agreement to operate and maintain these structures (dams). The Front Berm Stabilization Project involves placing 710 tons of rock riprap on 950 linear feet of berm at Papio D-17 and 610 tons of rock riprap on 750 linear feet of berm at Papio D-18 in order to stop the current berm erosion due to pond wave erosion and ensure dam safety.

On October 31, 2019, the District opened bids for the Papio Watershed Structures D-17 and D-18 Front Berm Stabilization Project and received 2 bids ranging from \$207,841.73 to \$128,315. The apparent low bid of \$128,315 was submitted by Thompson Construction, Inc. from Fremont, NE. Enclosed is a bid summary. The Engineer's cost estimate prepared by District staff for the Papio Watershed Structures D-17 and D-18 Front Berm Stabilization Project was \$155,450.

**Management recommends that the Programs, Projects and Operations Subcommittee recommend to the Board of Directors that the General Manager be authorized to execute a contract with Thompson Construction, Inc. in an amount of \$128,315 for the construction of the Papio Watershed Structures D-17 and D-18 Front Berm Stabilization Project, subject to changes deemed necessary by the General Manager and approval as to form by District Legal Counsel.**

# PAPIO WATERSHED STRUCTURES D-17 and D-18 FRONT BERM STABILIZATION PROJECT 502-2019

## BID SUMMARY

**BID OPENING: 10:00 A.M. - OCTOBER 31, 2019**

### A. Papio Watershed Structure D-17 Front Berm Stabilization

BIDDER NAME				Valley Corporation		Thompson Construction, Inc.		ENGINEER'S ESTIMATE	
Item	Bid Item Description	Unit	Quantity	Unit Price	Total Cost	Unit Price	Total Cost	Unit Price	Total Cost
1	Mobilization	LS	1	12,742.60	12,742.60	5,000	5,000	3000	3,000
2	Rock Riprap (Type B)	TONS	710	125.71	89,254.10	75	53,250	90	63,900
3	Soil Infill	CY	70	15.21	1,064.70	45	3,150	30	2,100
4	Seeding and Mat	SY	4110	2.16	8,877.60	2	8,220	4	16,440
5	Sub-Total				\$111,939.00		\$69,620		85,440

### B. Papio Watershed Structure D-18 Front Berm Stabilization

BIDDER NAME				Valley Corporation		Thompson Construction, Inc.		ENGINEER'S ESTIMATE	
Item	Bid Item Description	Unit	Quantity	Unit Price	Total Cost	Unit Price	Total Cost	Unit Price	Total Cost
1	Mobilization	LS	1	12,742.60	12,742.60	5,000	5,000	3000	3,000
2	Rock Riprap (Type B)	TONS	610 *	125.71	76,683.10	75	45,750	90	54,900
3	Soil Infill	CY	63 *	15.21	958.23	45	2,835	30	1,890
4	Seeding and Mat	SY	2555	2.16	5,518.80	2	5,110	4	10,220
5	Sub-Total				\$95,902.73		\$58,695		70,010
<b>GRAND TOTAL = Sub-total A + Sub-total B</b>				<b>\$207,841.76</b>		<b>\$128,315 **</b>		<b>\$ 155,450</b>	
<b>BID BOND</b>				YES		YES			

\*Includes rock riprap and soil infill for outlet channel repair

LS = Lump Sum

CY = Cubic Yards

SY = Square Yards

**\*\*MANAGEMENT RECOMMENDATION**

PAPIO WATERSHED STRUCTURE D-17  
FRONT BERM STABILIZATION  
LOCATION MAP

PROPOSED BERM STABILIZATION AREA  
LENGTH 950'

- TOP OF DAM -



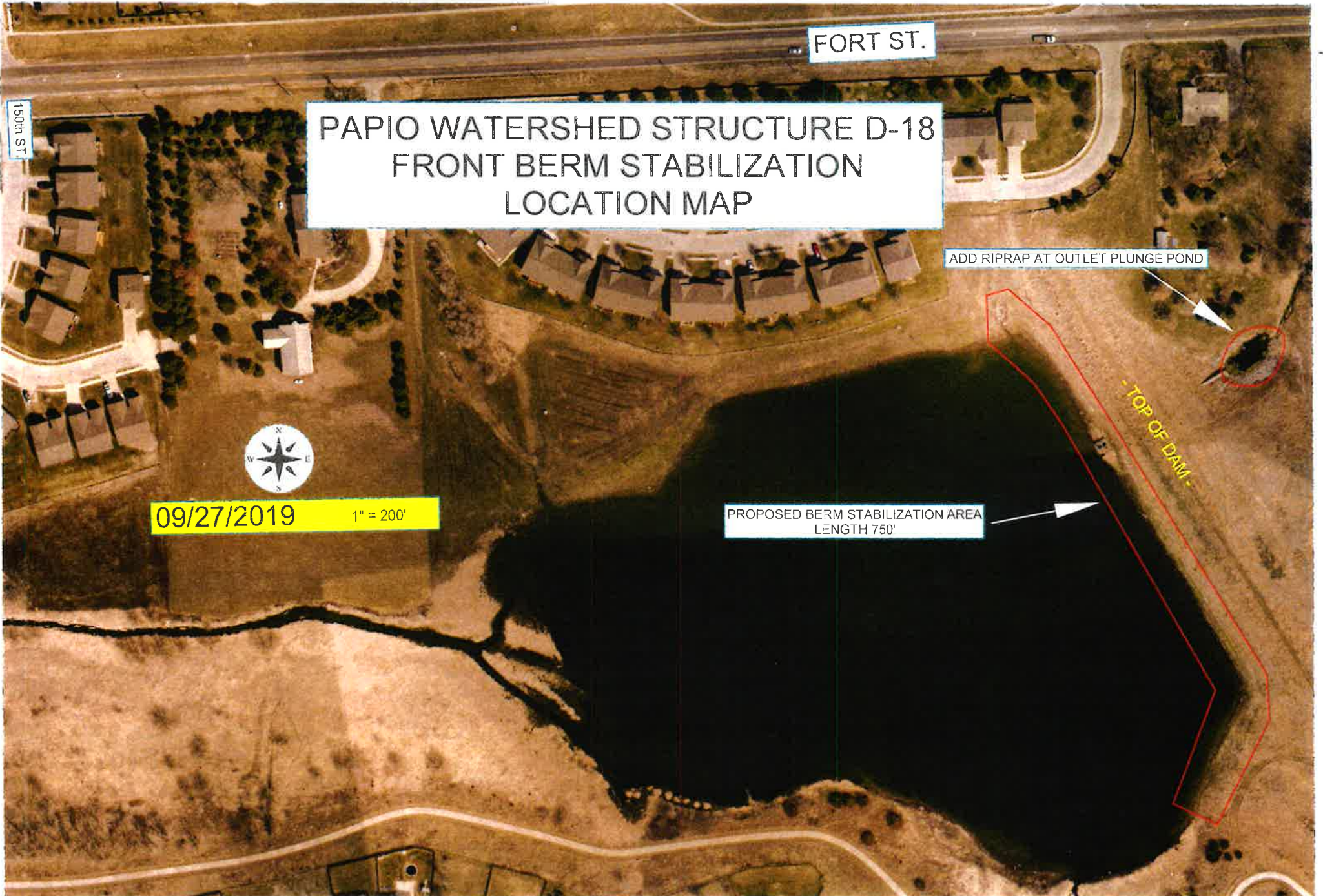
148th AVE.

IDA ST.

148th ST.

09/27/2019

1" = 200'



FORT ST.

PAPIO WATERSHED STRUCTURE D-18  
FRONT BERM STABILIZATION  
LOCATION MAP

150th ST.

ADD RIPRAP AT OUTLET PLUNGE POND



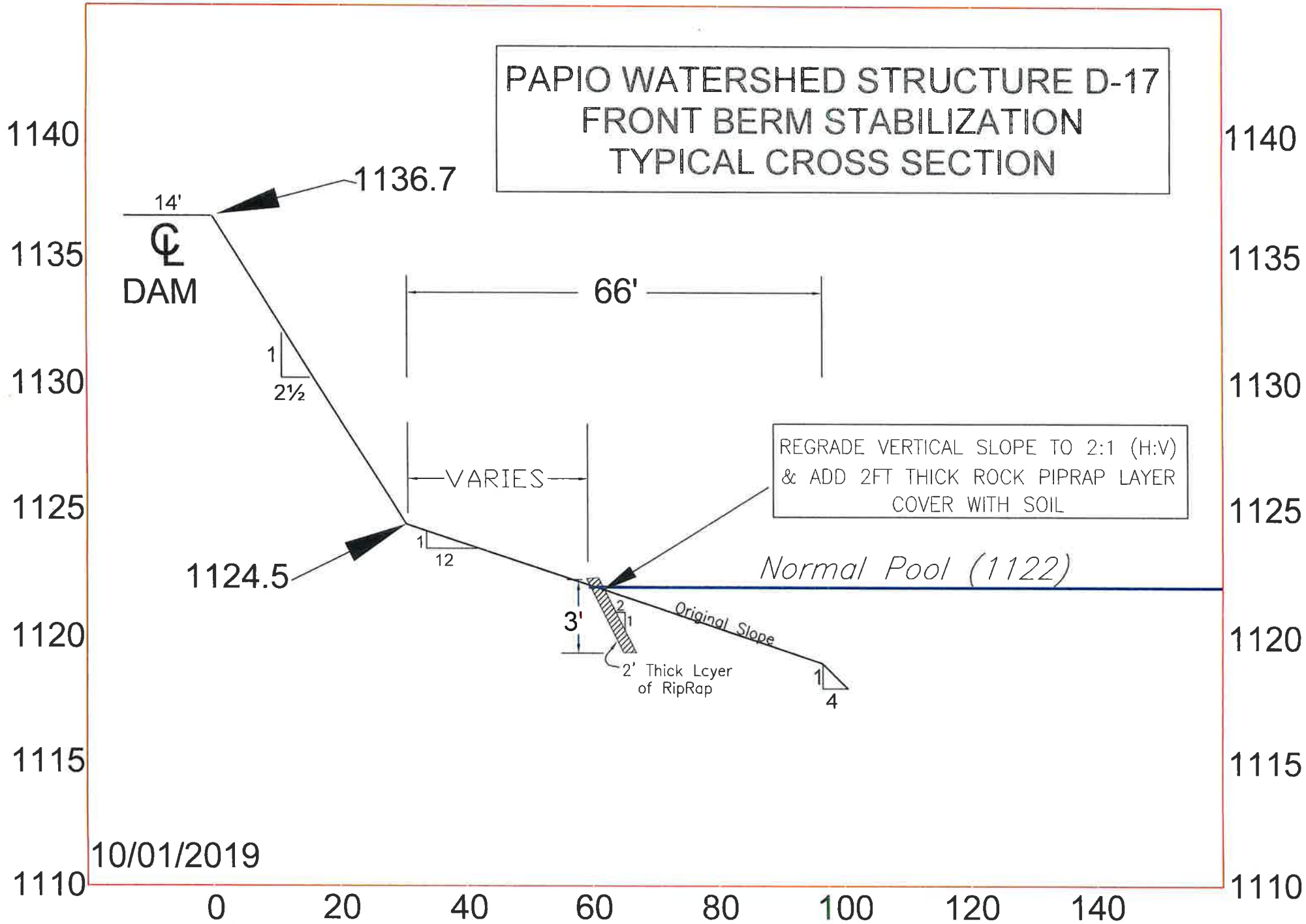
09/27/2019

1" = 200'

PROPOSED BERM STABILIZATION AREA  
LENGTH 750'

TOP OF DAM

PAPIO WATERSHED STRUCTURE D-17  
FRONT BERM STABILIZATION  
TYPICAL CROSS SECTION



Scale: V- 1"=5'  
H- 1"=20'