

MEMORANDUM

TO: Programs, Projects, and Operations Subcommittee
FROM: Eric Williams, Natural Resources Planner
SUBJECT: Platte River Bridge Trail Final Plans and Cost Estimate
DATE: April 5, 2023

The District has worked with the Nebraska Department of Transportation (NDOT) to deliver a federal aid project constructing a trail connection and bridge over the Platte River on the east side of the northbound lanes of the existing Hwy 34/75 bridge. A map of the area is attached.

The preliminary Plans, Specifications, and Estimates (PS&E) documents have been submitted by Schemmer as the design engineer for the project, and those documents are being processed by NDOT for final modifications and for the project to be bid for construction. The cover sheet of the plan set is attached.

The documents include an updated estimate for total project cost including construction, preliminary engineering, construction engineering, and contingency totaling \$4,071,900.04. This project has federal funding for 80% of the total project cost, and the updated total cost has been reflected by the Metropolitan Area Planning Agency (MAPA) in their federal funding Transportation Improvement Program (TIP). An interlocal agreement between local agencies was approved in last 2017 dividing the 20% local share of the project, and the updated total estimate has been provided to the local partners.

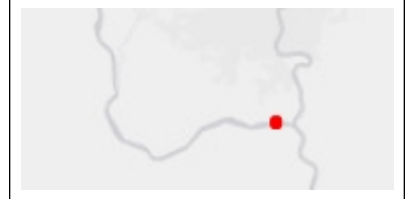
NDOT has provided the attached Resolution G which confirms that the District approves the preliminary PS&E plans including the updated cost estimate.

- **It is recommended that the Subcommittee recommend to the Board that the attached resolution be adopted authorizing the General Manger to signify the approval of the Plans, Specifications, and Estimates (PS&E) package, including the updated cost estimate, for the Platte River Bridge Trail Project.**

Attachment 1, US Highway 34 Bike and Walking Trail



Location



Sarpy County GIS



1210 Golden Gate Dr.
Suite 1130
Papillion, NE 68046
maps.sarpy.com

Legend

Project location
shown in green

1: 4,800



This product is for informational purposes and may not have been prepared for, or be suitable for legal, engineering, or surveying purposes. Users of this information should review or consult the source records and information sources to ascertain the usability of the information.

PROJECT NO.	SHEET NO.
MAPA-77(62)	A1
▲ CONTROL NO.	22770
▲ CONTROL NO.	
■ CONTROL NO.	

INDEX OF SHEETS

A1	TITLE SHEET
B1 - B2	TYPICAL CROSS-SECTIONS
C1	SUMMARY OF QUANTITIES
E1 - E3	AERIAL SHEETS WITH WETLANDS AND EROSION CONTROL
F1 - F2	HORIZONTAL ALIGNMENT AND CONTROL
G1 - G2	GENERAL INFORMATION
G3	SEDIMENT TRAP GRADING
H1	ZIPPER MERGE TRAFFIC CONTROL
J1 - J3	GEOMETRICS
J4 - J6	CONSTRUCTION & REMOVAL
L1 - L4	PLAN & PROFILE
R1 - R2	DRAINAGE CROSS-SECTION PLANS
S1 - S32	SPECIAL PLAN 1 PEDESTRIAN BRIDGE PLANS
U1	SPECIAL PLAN 2C PEDESTRIAN HANDRAIL
U2- U3	SPECIAL PLAN 3C GRAVITY BLOCK WALL PLAN AND PROFILE
U4 - U5	SPECIAL PLAN 4C TEMPORARY INLET PROTECTION
U6 - U9	SPECIAL PLAN 5C SILT CHECKS ALL TYPES
U10	SPECIAL PLAN 6C TYPE "A" CONCRETE HEADWALL
U11	SPECIAL PLAN 7C CONCRETE WASHOUT & CONSTRUCTION EXIT
U12 - U13	SPECIAL PLAN 8C AREA INLET WITH GRATE
W1 - W3	RIGHT-OF-WAY
X1 - X14	TRAIL CROSS-SECTIONS

STATE OF NEBRASKA

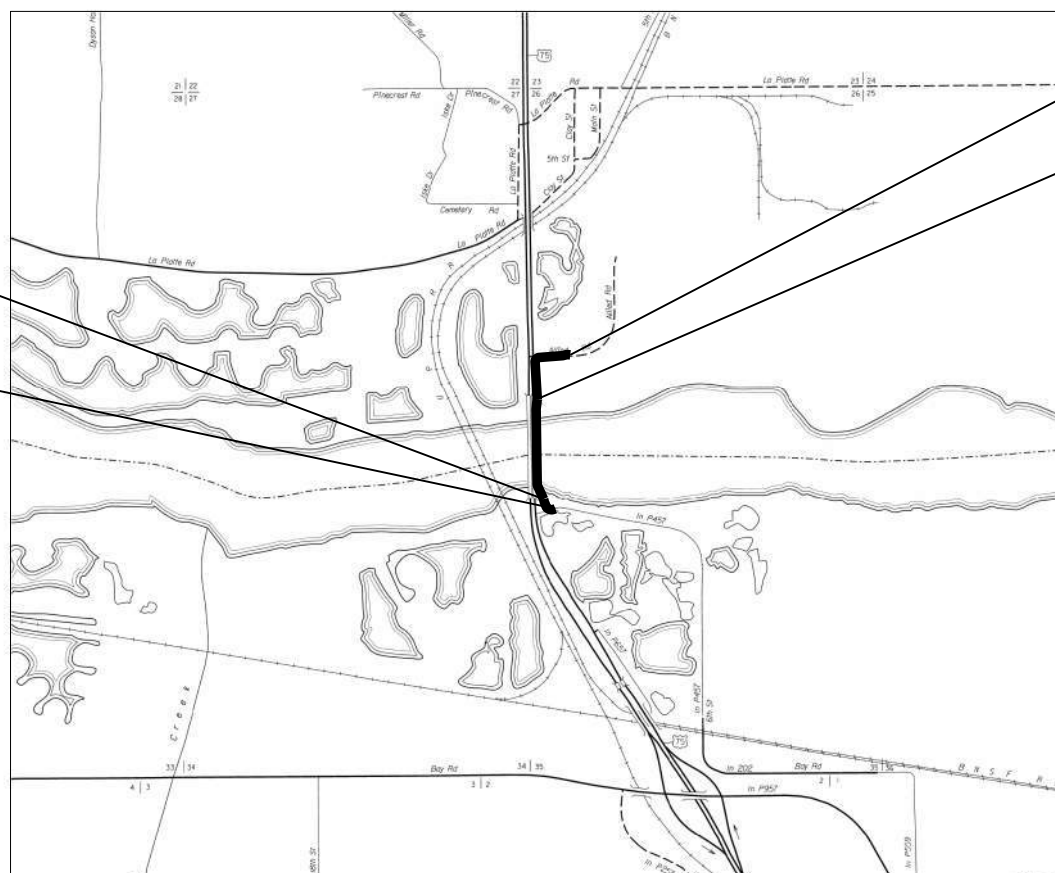
DEPARTMENT OF TRANSPORTATION

PLANS FOR CONSTRUCTION

PLATTE RIVER BRIDGE TRAIL

CASS AND SARPY COUNTIES

THE 2017 EDITION OF THE NEBRASKA STANDARD SPECIFICATIONS AND THE SPECIAL PROVISIONS APPLY TO THIS PROJECT.



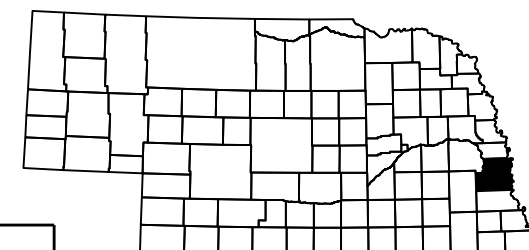
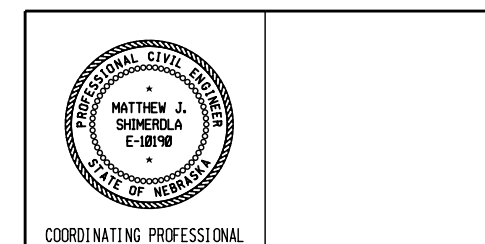
STD. PLAN NO.	DESCRIPTION
301-R12	(3 SHEETS) PAVEMENT DETAILS
410-R4	(2 SHEETS) FLARED END SECTIONS FOR CULVERT PIPES
411-R2	(4 SHEETS) BEDDING AND BACKFILL REQUIREMENTS FOR CONCRETE PIPE
425-R5	COLLARS AND ELBOWS FOR CONCRETE PIPES
428-R4	CONCRETE PLUGS AND FIELD TAP DETAILS
501-R7	(3 SHEETS) EROSION CONTROL
502-R2	(2 SHEETS) SILT FENCE DETAILS
710-R5	(2 SHEETS) FENCE DETAILS
920-R7	(3 SHEETS) TRAFFIC CONTROL, CONSTRUCTION AND MAINTENANCE
926	(2 SHEETS) TYPICAL LANE CLOSURE PLAN FOR MULTILANE ROADWAYS
941-R1	(2 SHEETS) PAVEMENT MARKING

CONVENTIONAL SIGNS

FENCE R.O.W. OR WIRE	
GUARDRAIL	
TRAVELED WAY	
DIKE	
CULVERT	
POWER POLE	
TELEPHONE POLE	
MAILBOX	
RAILROAD TRACKS	
MARSH	
TREE - CONIFEROUS	
TREE - DECIDUOUS	

R.O.W. LEGEND

NEW CONTROLLED ACCESS	
PREVIOUS CONTROLLED ACCESS	
LIMITS OF CONSTRUCTION	
PREVIOUS R.O.W.	
NEW R.O.W.	
EXISTING PERMANENT EASEMENT	
TEMPORARY EASEMENT	
EXCESS TAKING	
PERMANENT EASEMENT	
EXISTING RAILROAD EASEMENT	
NEW RAILROAD PERMANENT EASEMENT	
NEW RAILROAD TEMPORARY EASEMENT	



RESOLUTION

APPROVAL OF PRELIMINARY PLANS, SPECIFICATIONS, AND ESTIMATES (PS&E)

Papio-Missouri River Natural Resources District

Resolution No. _____

Whereas: Papio-Missouri River Natural Resources District (LPA) and State entered into an LPA Program Agreement for State to assist City in the development and construction of an LPA Federal-aid transportation project;

Whereas: The State or the design consultant has developed the project plans to the point where they are ready to submit to State’s PS & E Section for final edits for a bid letting;

Whereas: The LPA Program Agreement requires the city to review the preliminary PS & E package and either request modification or approve them as acceptable at this stage;

Whereas: City wishes to approve the preliminary PS & E package as prepared.

Be It Resolved by the Board of Directors of the Papio-Missouri River Natural Resources District that:

The Chairperson, Kevin Sopinski, is hereby authorized to sign the bottom of this resolution and submit it to the State signifying the City’s approval of the preliminary PS & E package.

NDOT Project Number: MAPA-77(62)

NDOT Control Number: 22770

NDOT Project Description: Platte River Bridge Trail

Adopted this _____ day of _____, _____ at _____ Nebraska.
(Month) (Year)

The Board of Directors of the Papio-Missouri River Natural Resources District:

Board/Council Member _____
Moved the adoption of said resolution
Member _____ Seconded the Motion
Roll Call: _____ Yes _____ No _____ Abstained _____ Absent
Resolution adopted, signed and billed as adopted

PAPIO-MISSOURI NATURAL RESOURCES DISTRICT
Kevin Sopinski

Chairperson

Attest:

Signature City Clerk