



Memorandum

To: Interested Engineering Consultants

From: John Winkler, General Manager

Date: January 12, 2024

RE: Request for Proposals for the Big Papio and Tributaries Culverts Rehabilitation Project

Proposals due by 10:00 AM on January 31, 2024

The Papio-Missouri River Natural Resources District (Papio NRD) is seeking proposals from firms qualified to provide professional services necessary to design, permit and replace or rehabilitate Papio NRD, City of Omaha and City of Papillion Big Papio and Tributaries culverts and storm sewer outlets to meet US Corps of Engineers (USACE) Public Law 84-99 levee safety requirements.

Purpose

The Project consists of rehabilitating or replacing twenty-three deficient culverts/storm sewer outlets. Rehabilitation may consist of methods such as installing high density polyethylene (HDPE) slip liner pipe, cured in place pipe and other cost-effective rehabilitation methods.

Qualifications

The selected firm will have a strong background in flood risk reduction flood projects, culvert/storm sewer related design and rehabilitation.

Instructions

All proposals must follow the format outlined in this request for proposals (RFP). Failure to do so may result in disqualification of the consultant's proposal. For the purposes of this RFP, a page shall mean one printed side of a sheet of paper. The RFP may include a front and back cover page (no plastic covers please). Do not include any divider pages. Proposals may be printed single sided (one page per sheet of paper) or double sided (two pages per sheet of paper). If interested, the following information should be submitted with the proposal:

- A letter of interest not to exceed two (2) 8 ½ x 11 pages. Include the firm name, address, telephone number and email address, the year the firm was established, any previous names for the firm and a list of the types of services for which the firm is qualified.
- The body of the proposal not to exceed ten (10) 8 ½ x 11 pages and three (3) 11 x 17 pages. General overview of firms understanding of the project and approach to the project.
- A description of the project organization not to exceed two (2) 8 ½ x 11 pages. Including the names of the principals of the firm, the names of the personnel expected to be utilized including any sub-consultant personnel and the specific project contact person.



- A list of not more than four (4) similar projects completed by the firm within the last 5 years. Each project description shall be limited to one (1) 8 ½ x 11 page (maximum of 4 pages).
- Resumes for up to seven (7) key personnel. Resumes shall include their workplace location, a description of their relevant experience, length of time with the firm applicable licensures and registrations, and their proposed role in the project. Resumes shall be limited to one (1) 8 ½ x 11 page per resume (maximum of 7 pages).
- Proposed schedule of completion not to exceed one (1) 11 x 17 page.
- Proof of professional liability insurance in the amount of \$1,000,000 not to exceed one 8 ½ x 11 page.

Selection factors for the project will include the following:

- Project understanding and approach.
- The project organization, adequacy of available staff, location of personnel relative to the project location and the proposed schedule of completion.
- Similar projects completed by the firm.
- Qualifications of the professional personnel and staff members.
- This RFP for consulting services is a qualifications-based selection process. The price for consulting services shall be negotiated during the scoping process and should not be included in the proposal. Estimates of the probable cost of alternatives included in the proposal may be listed in the proposal. All consultant firms submitting proposals must be available to initiate work upon notice to proceed.

This RFP for consulting services is a qualifications-based selection process. The price for consulting services shall be negotiated during the scoping process and should not be included in the proposal. Estimates of the probable cost of alternatives included in the proposal may be listed in the proposal. All consultant firms submitting proposals must be available to initiate work upon notice to proceed.

An Ad Hoc Subcommittee of the District's Board of Directors will be responsible for reviewing and evaluating the proposals. Final selection of the firm to perform such services will follow timetable below:

- **January 12, 2024** - Mail out RFP to engineering consultants.
- **January 31, 2024** - Final date for receipt of proposals.
- **February 6, 2024** - Ad-Hoc Subcommittee meeting on the initial screening of proposals received.
- **February 9, 2024** - Send letter to selected firms notifying them of the interview time and date.
- **March 7, 2024** - Ad-Hoc Subcommittee meeting to interview selected firms. The subcommittee will rank each firm by preference.
- **April 9, 2024** - Ad-Hoc Subcommittee meeting to negotiate contract with first choice firm.
- **April 11, 2024** - District Board of Directors adopts Subcommittee recommendation on entering into a contract with the selected engineering consulting firm.



PAPIO
MISSOURI RIVER
NATURAL RESOURCES DISTRICT



Interested firms should submit eight (8) printed copies and one (1) electronic copy of their proposal to the District's Omaha office, located at 8901 South 154th Street, Omaha, Nebraska 68138, no later than 10:00 AM on January 31, 2024.

Inquiries regarding this matter may be addressed to Martin Cleveland at Mcleland@PapioNRD.org or (402) 315-1707.

CC: Papio NRD Big Papio and Tributaries Culverts Rehabilitation Project Consultant Selection Subcommittee:

1. Jim Thompson, Chair
2. Fred Conley, Vice Chair
3. Patrick Bonnett
4. Phil Davidson
5. Tim McCormick
6. Josh Henningson, Alternate



Papio NRD

Big Papio and Tributaries Culverts Rehabilitation Project

12/14/2023

1. Little Papillion Creek Channel

Pipe Number	Station	Size	Reach	Owner
LP-R01	389+85R	36" RCP/CMP	Confluence to UPRR	City of Omaha
LP-R10	335+60R	24" RCP	UPRR to Grover	NDOT
LP-L08	325+70L	18" CMP	UPRR to Grover	Private
LP-R18	281+10R	42" RCP/CMP	Center to Pacific	City of Omaha
LP-R32	218+25R	15" CMP	Pacific to Howard	Private
LP-L40	199+70L	15" RCP/CMP	Howard to Dodge	Private
LP-L42	195+00L	18" CMP	Howard to Dodge	Private
LP-L46	185+80L	12" CMP	Howard to Dodge	Private
LP-L65	101+10L	36" RCP/CMP	Blondo to Maple	City of Omaha
LP-R59*	91+95R	30" CMP	Blondo to Maple	Papio NRD

** pipe appears abandoned; as per USACE guidance, Papio NRD staff may fill or remove*

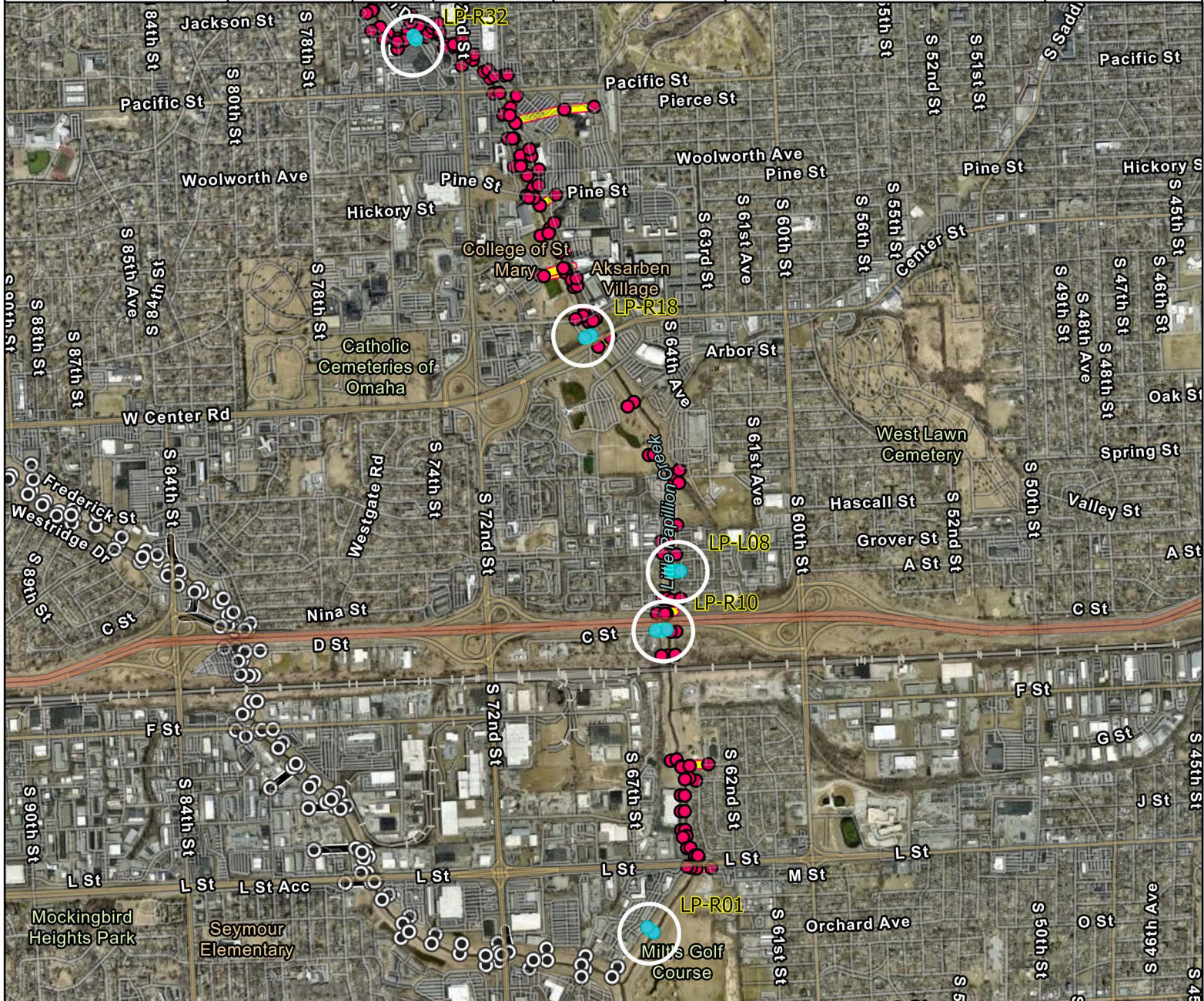
2. Big Papillion Creek Levee

Pipe Number	Station	Size	Reach	Owner
BP-R58	436+45L	18" RCP	W. Center Rd. to 84th St.	City of Omaha
BP-R52	406+30L	36" RCP/CMP	W. Center Rd. to 84th St.	City of Omaha
BP-L44A	381+48L	36" RCP	84th St. to F St.	NDOT
BP-L29	474+00L	48" RCP/CMP	L St. to Q St.	City of Omaha
BP-L18	335+40L	48" CMP	Harrison to Cornhusker	Papio NRD
BP-L16	264+50L	72" CMP	Harrison to Cornhusker	Papio NRD
BP-SC-R03	18+32R	48" RCP	Big Elk Creek	Papio NRD
BP-L08	126+80L	36" CMP	36th St. to Hwy 370	Papio NRD
BP-L06	113+50L	42" CMP	36th St. to Hwy 370	Papio NRD
BP-R02A	28+30R	8" STEEL/CMP	Hwy 370 to Capehart Rd.	Papio NRD

3. West Branch Papillion Creek Levee

Pipe Number	Station	Size	Reach	Owner
WB-L19	220+55L	24" CMP	72nd St. to 84th St.	City of Papillion
WB-L17	208+25L	24" RCP/CMP	72nd St. to 84th St.	City of Papillion
WB-L14	169+35L	60" CMP	48th St. to 72nd St.	Papio NRD
WB-R15	125+20R	54" CMP	48th St. to 72nd St.	Papio NRD

Pipe_number	Length	Size	Type	CREEK	REACH	STATION
LP-R10	185.6	24"	RCP	LITTLE PAPIO	UPRR - GROVER ST.	335+60
LP-L08	146.9	18"	CMP	LITTLE PAPIO	UPRR - GROVER ST.	325+70
LP-R18	115.4	42"	RCP-CMP	LITTLE PAPIO	CENTER ST. - PACIFIC ST.	281+10
LP-L65	251.3	36"	RCP-CMP	LITTLE PAPIO	BLONDO ST. - MAPLE ST.	101+10
LP-L46	53	12"	CMP	LITTLE PAPIO	HOWARD ST. - DODGE ST.	185+80
LP-L42	138.6	18"	CMP	LITTLE PAPIO	HOWARD ST. - DODGE ST.	195+00
LP-L40	60	15"	RCP-CMP	LITTLE PAPIO	HOWARD ST. - DODGE ST.	199+70
LP-R32	83.6	15"	CMP	LITTLE PAPIO	PACIFIC ST. - HOWARD ST.	218+25
LP-R01	134.5	36"	RCP-CMP	LITTLE PAPIO	CONFLUENCE – UPRR	389+85
LP-R59	56.3	30"	CMP	LITTLE PAPIO	BLONDO ST. - MAPLE ST.	91+95

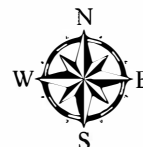


Little Papio

Overview

12/13/2023

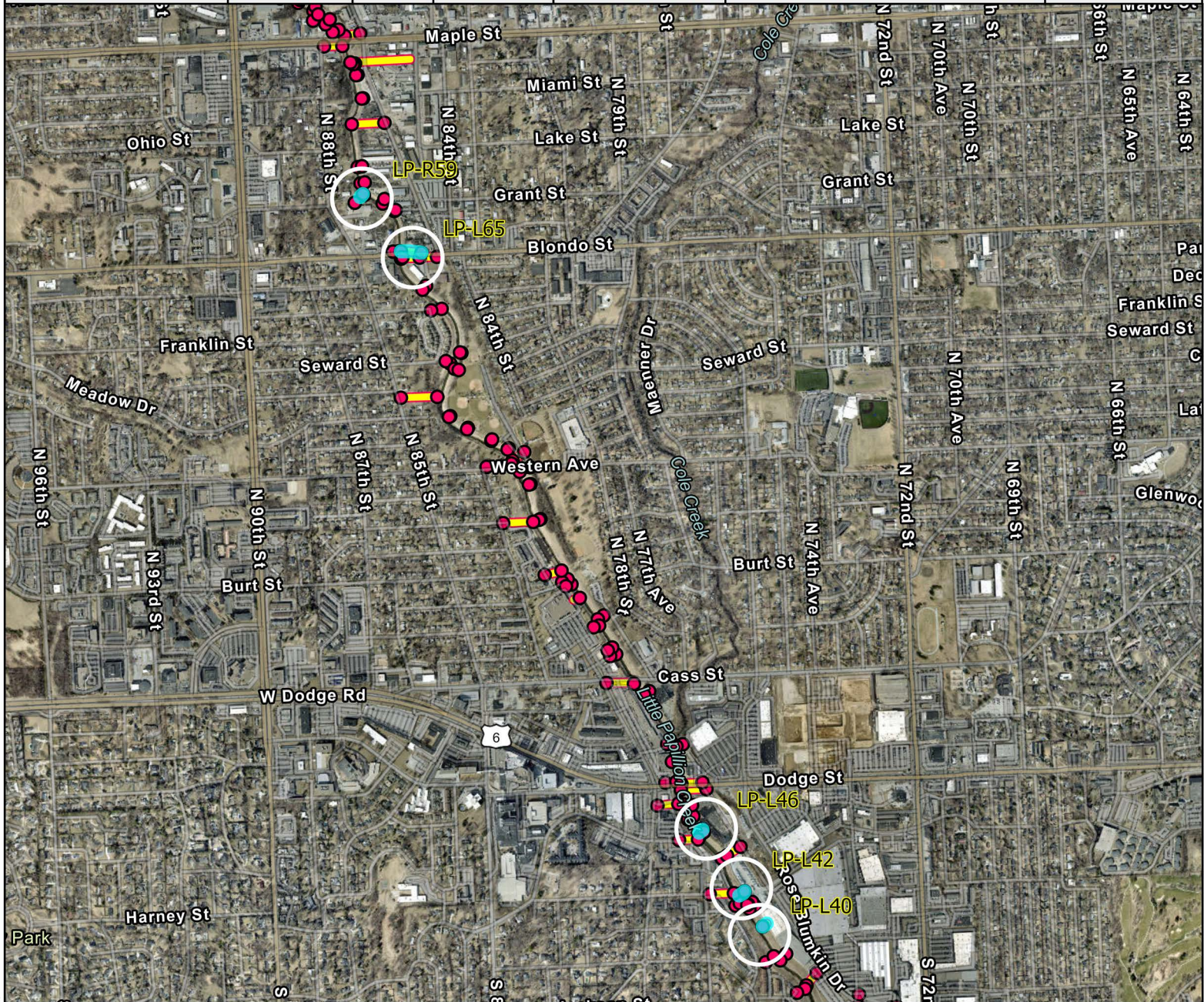
Sheet 1



PAPIO
MISSOURI RIVER
NATURAL RESOURCES DISTRICT

(402) 444-6222 8901 S 154th St, Omaha, NE 68138

Pipe_number	Length	Size	Type	CREEK	REACH	STATION
LP-R10	185.6	24"	RCP	LITTLE PAPIO	UPRR - GROVER ST.	335+60
LP-L08	146.9	18"	CMP	LITTLE PAPIO	UPRR - GROVER ST.	325+70
LP-R18	115.4	42"	RCP-CMP	LITTLE PAPIO	CENTER ST. - PACIFIC ST.	281+10
LP-L65	251.3	36"	RCP-CMP	LITTLE PAPIO	BLONDO ST. - MAPLE ST.	101+10
LP-L46	53	12"	CMP	LITTLE PAPIO	HOWARD ST. - DODGE ST.	185+80
LP-L42	138.6	18"	CMP	LITTLE PAPIO	HOWARD ST. - DODGE ST.	195+00
LP-L40	60	15"	RCP-CMP	LITTLE PAPIO	HOWARD ST. - DODGE ST.	199+70
LP-R32	83.6	15"	CMP	LITTLE PAPIO	PACIFIC ST. - HOWARD ST.	218+25
LP-R01	134.5	36"	RCP-CMP	LITTLE PAPIO	CONFLUENCE – UPRR	389+85
LP-R59	56.3	30"	CMP	LITTLE PAPIO	BLONDO ST. - MAPLE ST.	91+95

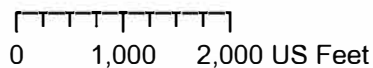


Little Papio

Overview

12/13/2023

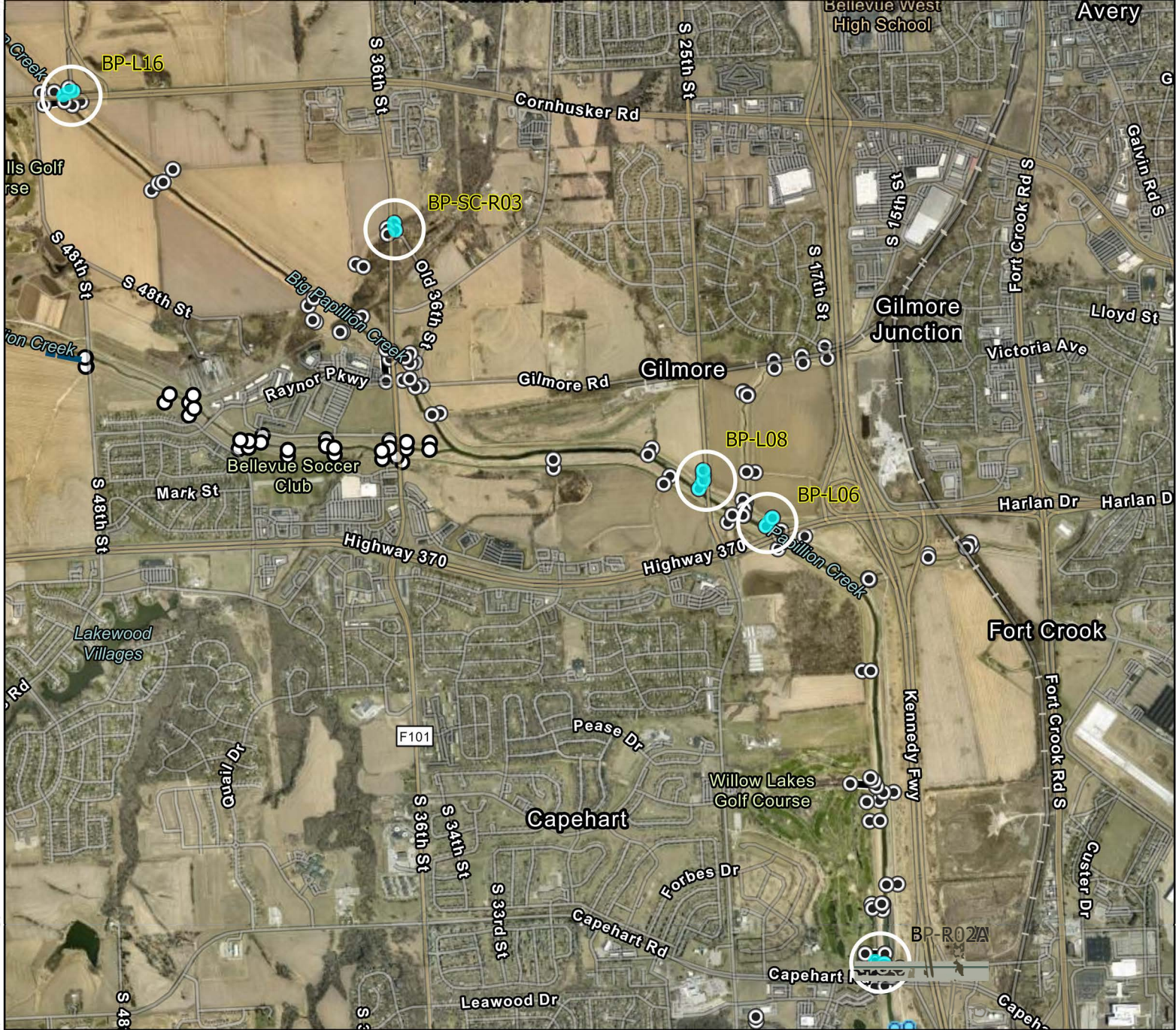
Sheet 2



PAPIO
MISSOURI RIVER
NATURAL RESOURCES DISTRICT

(402) 444-6222 8901 S 154th St, Omaha, NE 68138

Pipe Number	Length	Size	Type	CREEK	REACH	OM Station
BP-L06	183.7	42"	CMP	BIG PAPIO	HWY 370 - 36TH ST.	113+50
BP-L08	261	36"	CMP	BIG PAPIO	HWY 370 - 36TH ST.	126+80
BP-L16	188.8	72"	CMP	BIG PAPIO	CORNHUSKER RD. - HARRISON ST.	264+50
BP-L18	140	48"	CMP	BIG PAPIO	CORNHUSKER RD. - HARRISON ST.	335+40
BP-L44A	223	36"	RCP	BIG PAPIO	F ST. - 84TH ST.	381+48
BP-R58	102.4	18"	RCP	BIG PAPIO	84TH ST. - W CENTER RD.	436+45
BP-SC-R03	132.5	48"	CMP	BIG ELK CREEK	BIG ELK CREEK	18+32
BP-R52	112.6	36"	RCP-CMP	BIG PAPIO	84TH ST. - W CENTER RD.	406+30
BP-L29	385.4	48"	RCP-CMP	BIG PAPIO	Q ST. - L ST.	474+00
BP-R02A	180.7	8"	STEEL-CMP	BIG PAPIO	CAPEHART RD. - HWY 370	28+30

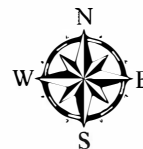


Big Papio

12/13/2023

Sheet 1

Overview

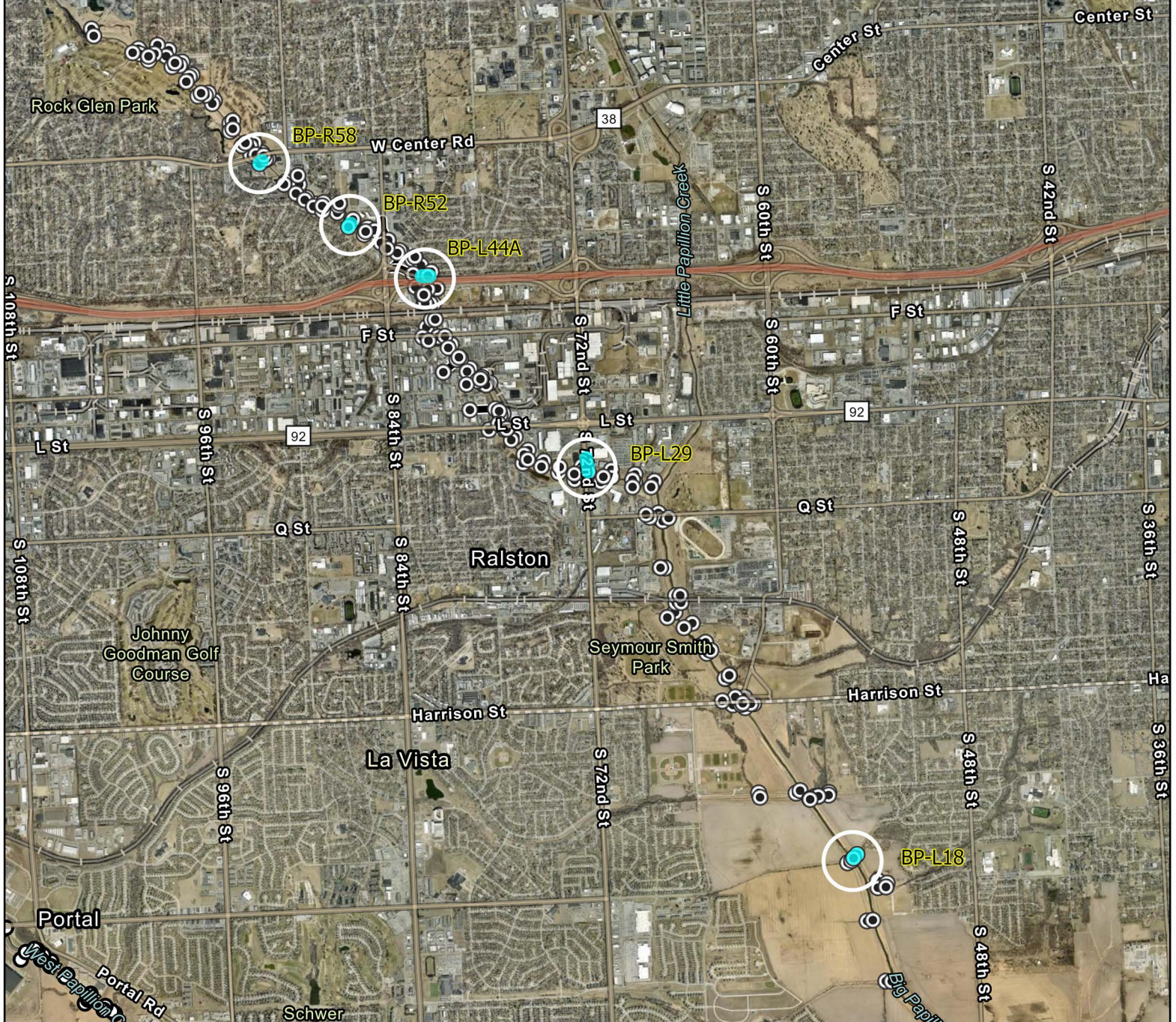


PAPIO
MISSOURI RIVER

NATURAL RESOURCES DISTRICT

(402) 444-6222 8901 S 154th St, Omaha, NE 68138

Pipe Number	Length	Size	Type	CREEK	REACH	OM Station
BP-L06	183.7	42"	CMP	BIG PAPIO	HWY 370 - 36TH ST.	113+50
BP-L08	261	36"	CMP	BIG PAPIO	HWY 370 - 36TH ST.	126+80
BP-L16	188.8	72"	CMP	BIG PAPIO	CORNHUSKER RD. - HARRISON ST.	264+50
BP-L18	140	48"	CMP	BIG PAPIO	CORNHUSKER RD. - HARRISON ST.	335+40
BP-L44A	223	36"	RCP	BIG PAPIO	F ST. - 84TH ST.	381+48
BP-R58	102.4	18"	RCP	BIG PAPIO	84TH ST. - W CENTER RD.	436+45
BP-SC-R03	132.5	48"	CMP	BIG ELK CREEK	BIG ELK CREEK	18+32
BP-R52	112.6	36"	RCP-CMP	BIG PAPIO	84TH ST. - W CENTER RD.	406+30
BP-L29	385.4	48"	RCP-CMP	BIG PAPIO	Q ST. - L ST.	474+00
BP-R02A	180.7	8"	STEEL-CMP	BIG PAPIO	CAPEHART RD. - HWY 370	28+30



Big Papio
 12/13/2023
 Sheet 2

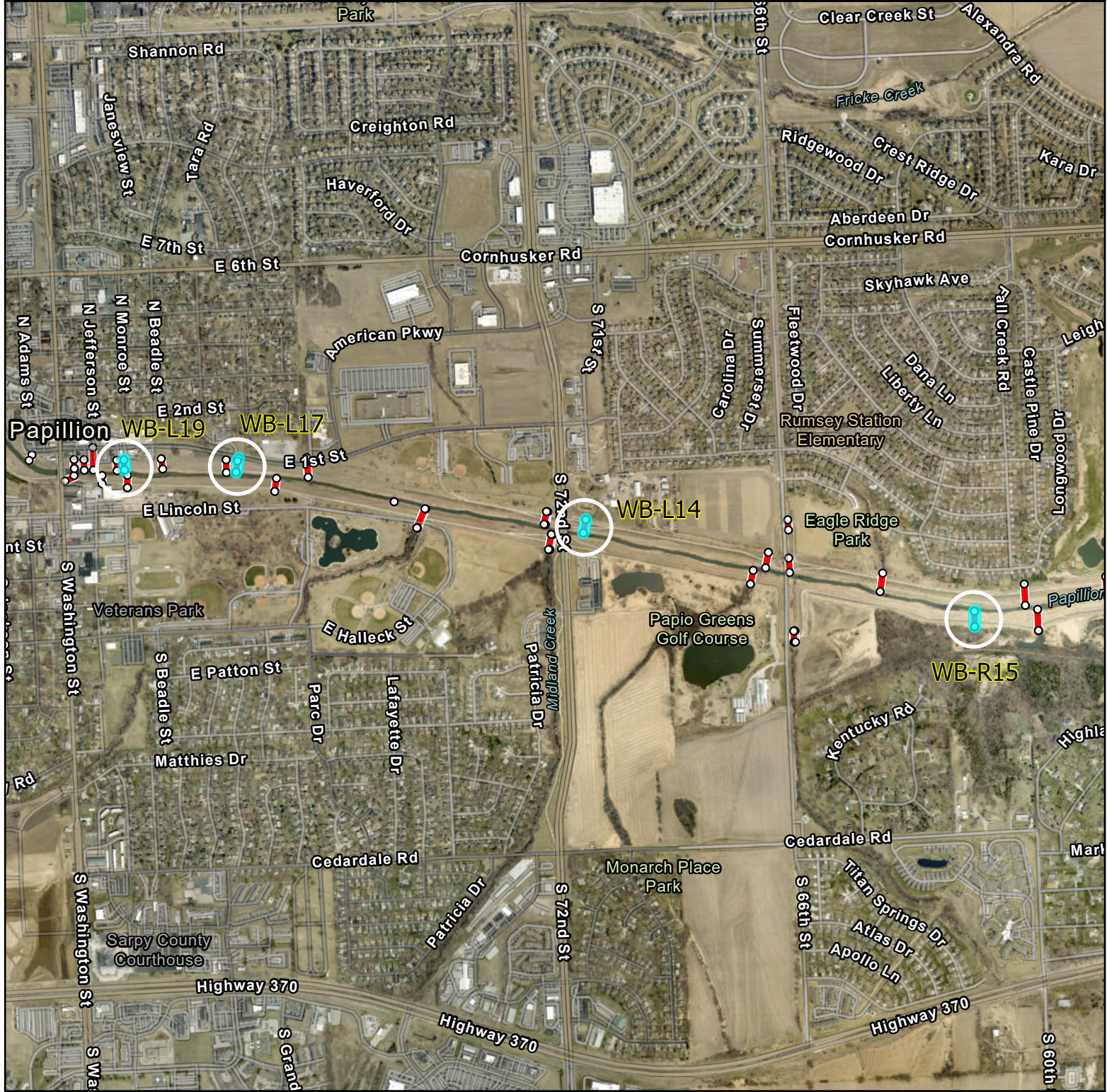
Overview



PAPIO
 MISSOURI RIVER
 NATURAL RESOURCES DISTRICT

(402) 444-6222 8901 S 154th St, Omaha, NE 68138

Pipe Number	Length	Size	Type	CREEK	REACH	Station
WB-L17	157	24"	RCP-CMP	WEST BRANCH	72ND ST. - 84TH ST.	208+25
WB-L14	149.8	60"	CMP	WEST BRANCH	48TH ST. - 72ND ST.	169+35
WB-L19	112	24"	CMP	WEST BRANCH	72ND ST. - 84TH ST.	220+55
WB-R15	169.9	54"	CMP	WEST BRANCH	48TH ST. - 72ND ST.	125+20

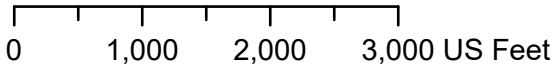


West Branch

Overview

12/13/2023

Sheet 1



PAPIO
MISSOURI RIVER
NATURAL RESOURCES DISTRICT

(402) 444-6222 8901 S 154th St, Omaha, NE 68138