

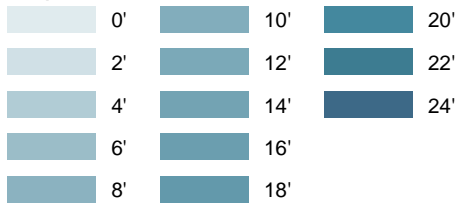
WEHRSPANN RESERVOIR

November, 2015

(revised October 2016)

Depth	Elevation	Acres	Acres	Acumm. Acre Ft
0'	1,095.80	217.77	217.77	2,267.64
2'	1,094	192.95	192.95	1,844.83
4'	1,092	173.4	173.4	1,468.30
6'	1,090	153.16	153.16	1,131.76
8'	1,088	129.6	129.6	836.23
10'	1,086	102.39	102.39	589.49
12'	1,084	80.5	80.5	394.93
14'	1,082	52.8	52.8	246.7
16'	1,080	35.29	35.29	151.49
18'	1,078	25.81	25.81	86.1
20'	1,076	15.48	15.48	39.79
22'	1,074	7.36	7.36	12.56
24'	1,072	1.83	1.83	1.83

Depth

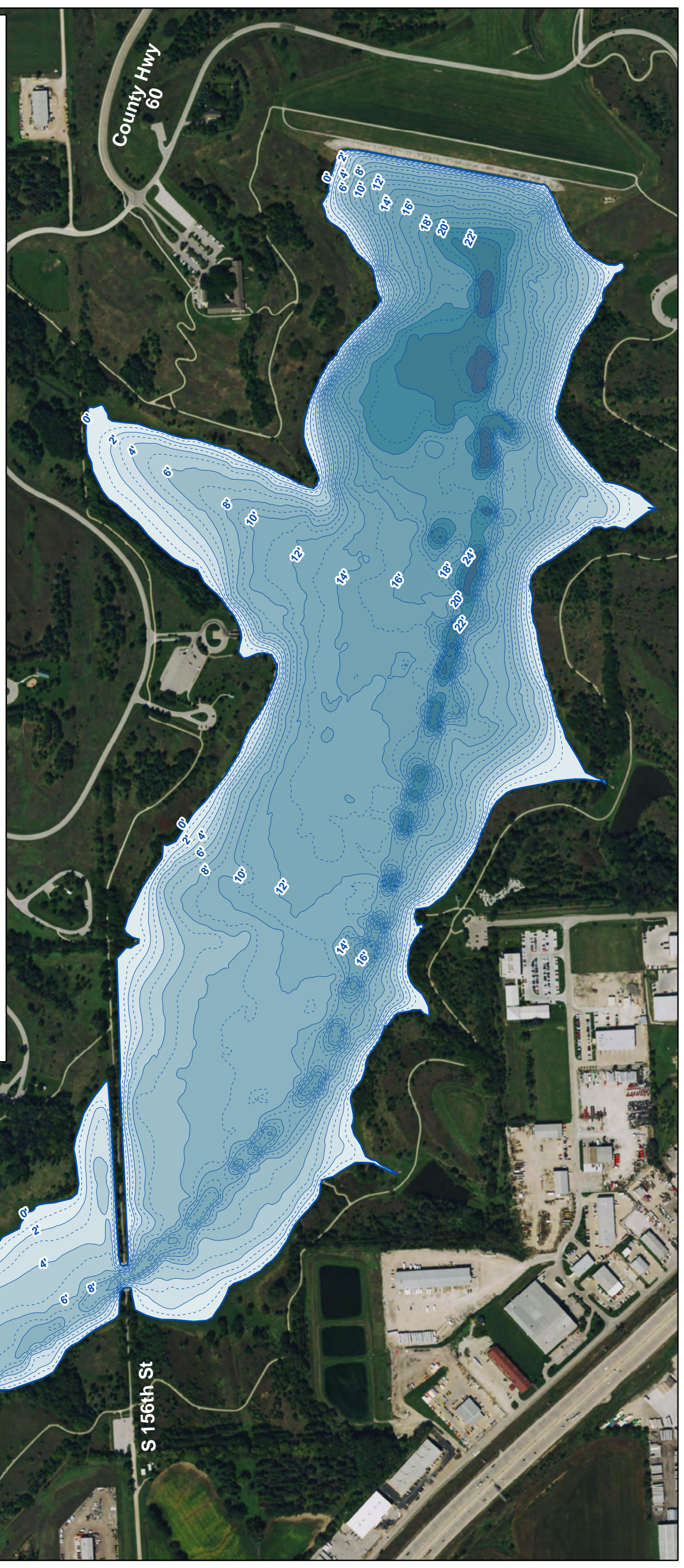
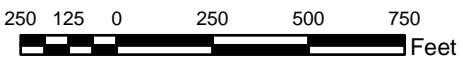


Contours based on conservation pool elevation of 1095.8

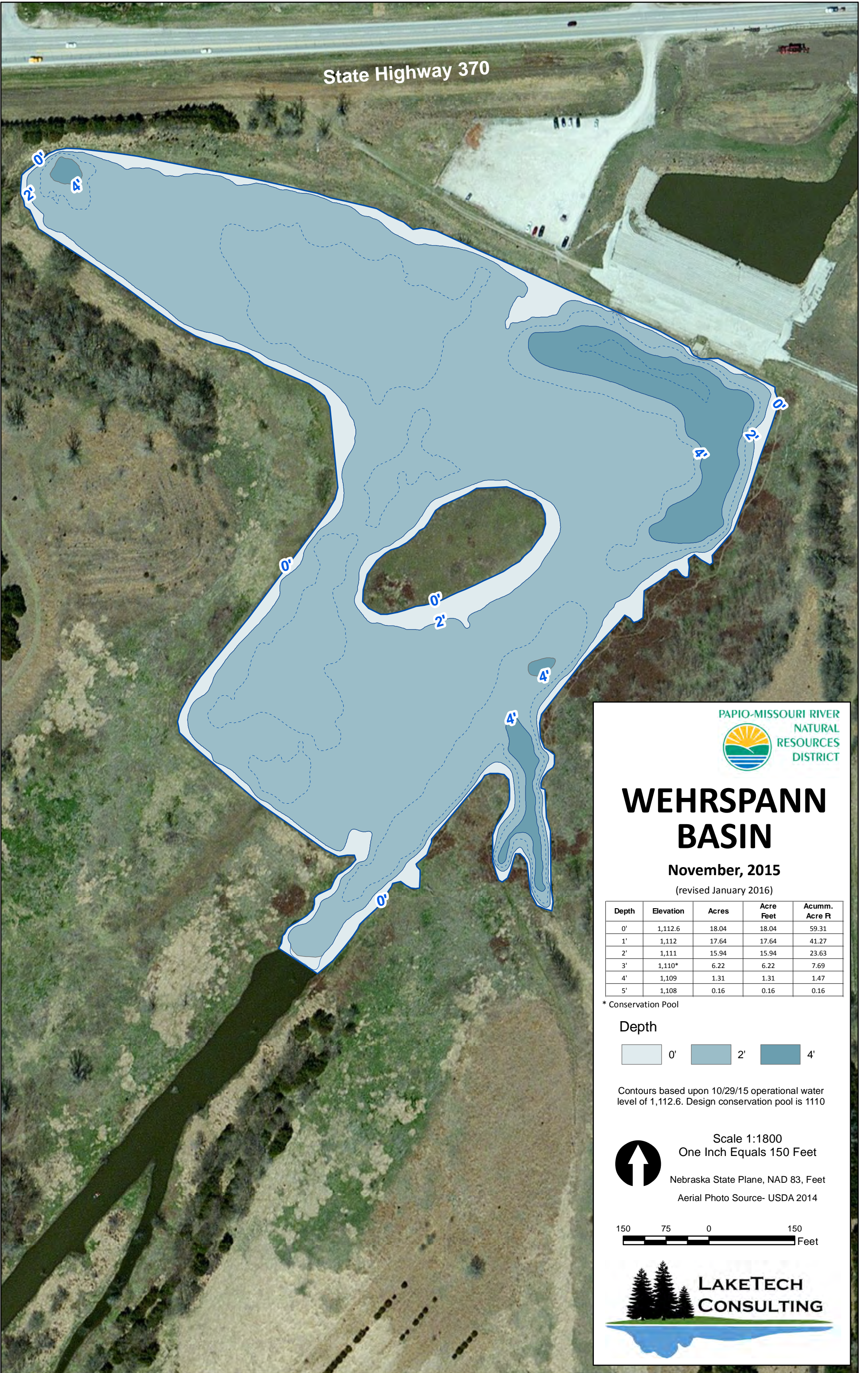


Scale 1:6000
One Inch Equals 500 Feet

Nebraska State Plane, NAD 83, Feet
Aerial Photo Source- USDA 2014



State Highway 370



WEHRSPANN BASIN

November, 2015

(revised January 2016)

Depth	Elevation	Acres	Acre Feet	Acumm. Acre Ft
0'	1,112.6	18.04	18.04	59.31
1'	1,112	17.64	17.64	41.27
2'	1,111	15.94	15.94	23.63
3'	1,110*	6.22	6.22	7.69
4'	1,109	1.31	1.31	1.47
5'	1,108	0.16	0.16	0.16

* Conservation Pool

Depth

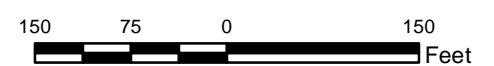


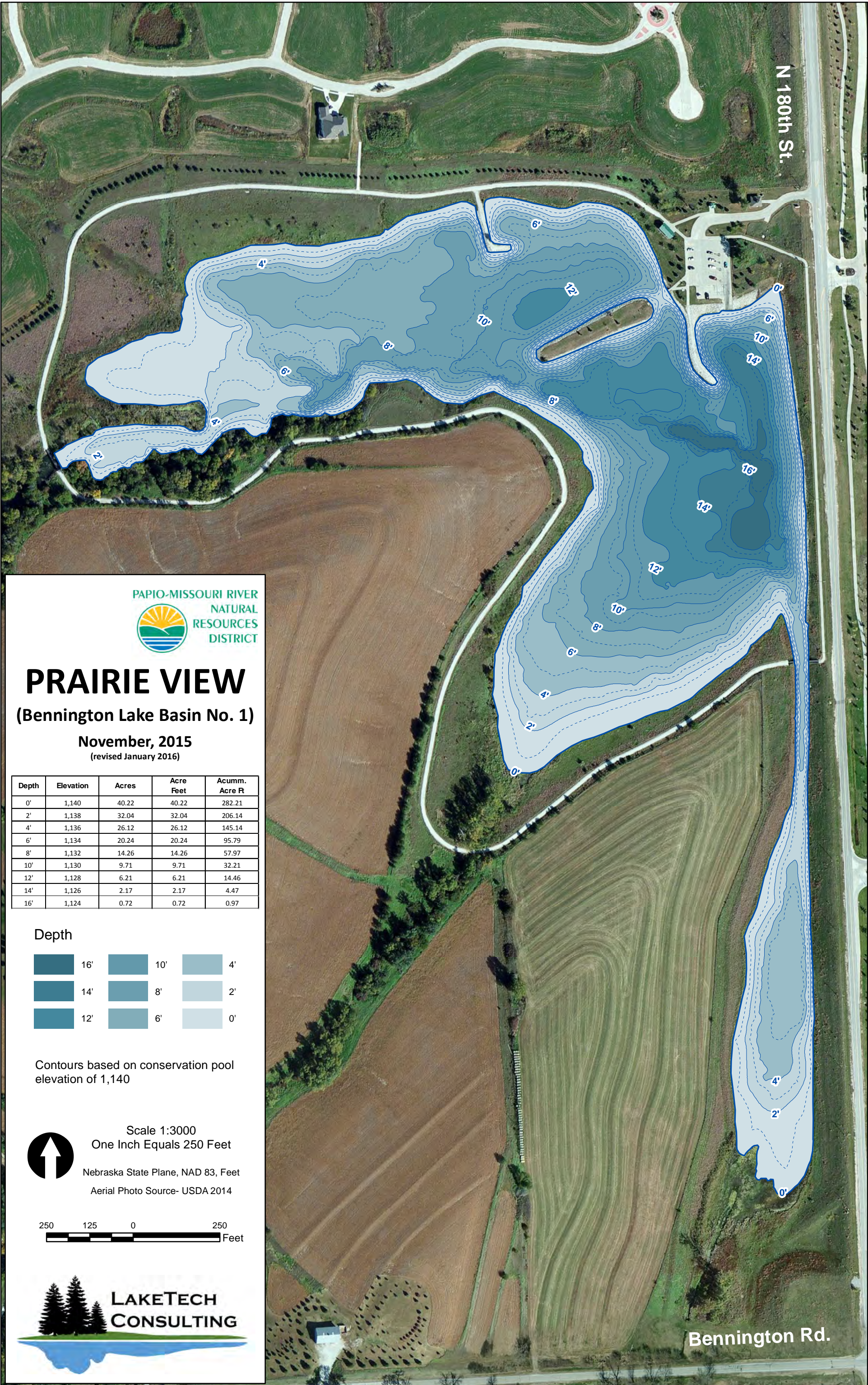
Contours based upon 10/29/15 operational water level of 1,112.6. Design conservation pool is 1110



Scale 1:1800
One Inch Equals 150 Feet

Nebraska State Plane, NAD 83, Feet
Aerial Photo Source- USDA 2014





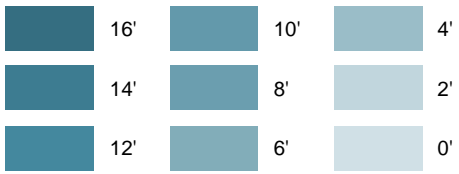
PRAIRIE VIEW

(Bennington Lake Basin No. 1)

November, 2015
(revised January 2016)

Depth	Elevation	Acres	Acre Feet	Acumm. Acre Ft
0'	1,140	40.22	40.22	282.21
2'	1,138	32.04	32.04	206.14
4'	1,136	26.12	26.12	145.14
6'	1,134	20.24	20.24	95.79
8'	1,132	14.26	14.26	57.97
10'	1,130	9.71	9.71	32.21
12'	1,128	6.21	6.21	14.46
14'	1,126	2.17	2.17	4.47
16'	1,124	0.72	0.72	0.97

Depth



Contours based on conservation pool elevation of 1,140



Scale 1:3000
One Inch Equals 250 Feet

Nebraska State Plane, NAD 83, Feet
Aerial Photo Source- USDA 2014



Bennington Rd.

N 180th St.