

Agenda Item: 11.

## MEMORANDUM

**TO:** Programs, Projects and Operations Subcommittee

**FROM:** Martin P. Cleveland

**SUBJECT:** Big Papio Creek Levee Project (Cornhusker Rd to Giles Rd) -  
Fricke's Farm Drainage Study Proposal

**DATE:** May 25, 2012

---

A portion of the District's Big Papio Creek Levee Project (Cornhusker Rd to Harrison Street) is located in Sarpy County on the northeastern edge of Papillion, Nebraska. Over 35 years ago, 20 to 30 year level flood protection levees were built along Big Papio Creek before development (houses, shopping centers) had occurred. There are two drainage structures that outlet through the right bank levee, as depicted on the attached map. A cropland area owned by Charles and Milton Fricke exists at the downstream end of the tributary watersheds adjacent to the referenced levee system. Increased runoff due to development has increased erosion in receiving drainage ditches. Also, the landowners believe that the capacity of the drainage facilities is close to being exceeded. The Fricke's have contacted City of Papillion and District staff looking for a solution to the drainage problem on their property and District levee ROW.

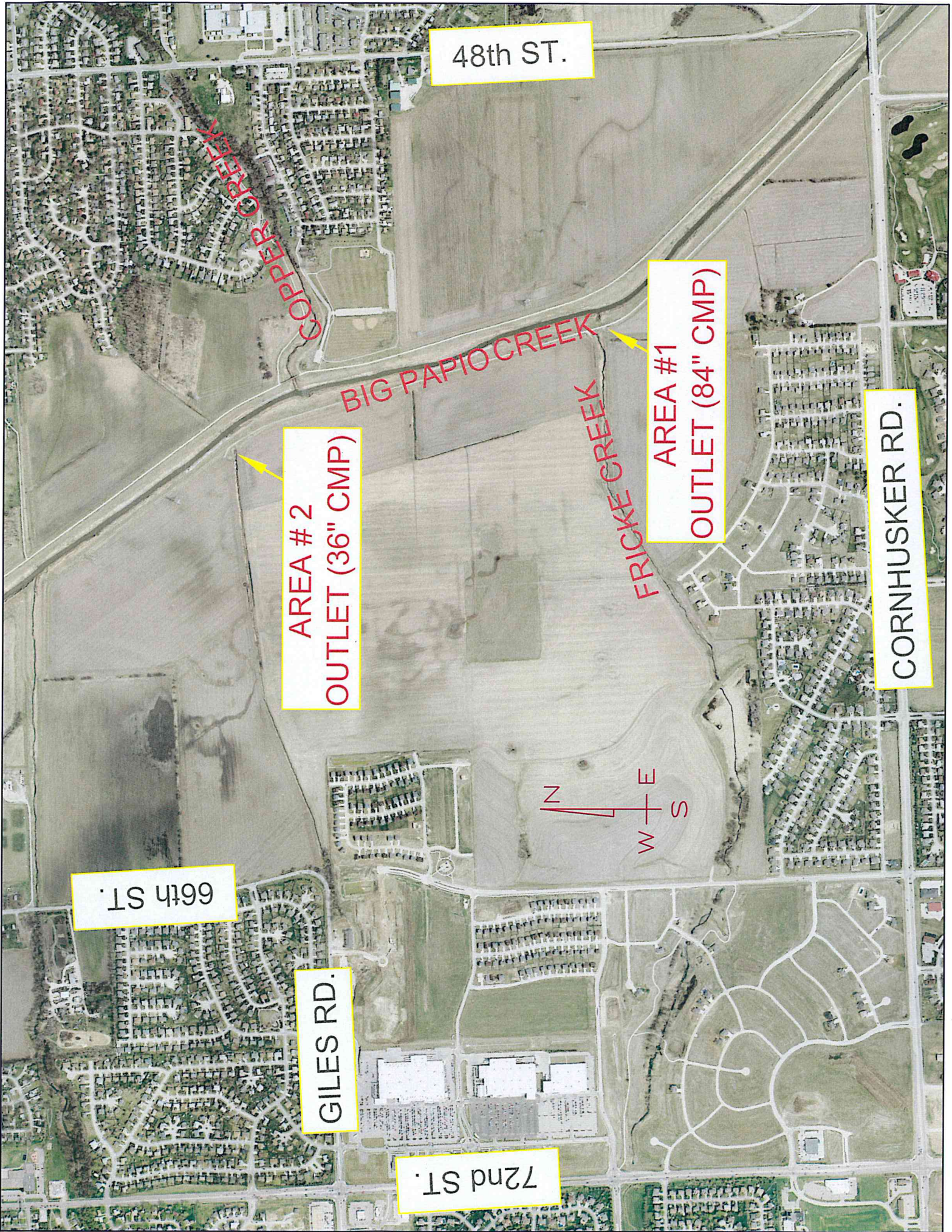
It has been concluded by City and District staff that the Fricke's concerns have merit and the problem is deserving of a drainage study to evaluate the situation and prepare some solutions to be considered. The City has an interest in this area, as this area is in their planning jurisdiction and annexation area.

It is proposed that the drainage study be conducted by Lamp Rynearson and Associates (see enclosed proposal) due to their familiarity with the area developments and associated hydrology, as they have served as consultants for many of the developments that contribute runoff water to the drainage ditches. It is proposed that the District would serve as the contracting agency with Lamp Rynearson and Associates and the City will reimburse 50% of the engineering services cost estimated at \$27,000 (hourly rate with maximum not to exceed \$27,000).

At a later date, if the City and District find that the drainage study shows a need for infrastructure improvements (e.g. replacing or adding to drainage structures discharging through the District's levee), an interlocal agreement will be brought back to the Board for consideration.

Management recommends that the Programs, Projects and Operation Subcommittee recommend to the Board of Directors that the General Manager be authorized to execute the proposed professional services agreement with Lamp Rynearson and Associates for the not to exceed maximum of \$27,000 for the Fricke Farm Drainage Study, subject to changes deemed necessary by the General Manager and approval as to form by District Legal Counsel and also subject to agreement by the City of Papillion to reimburse 50% of the actual costs for such study.





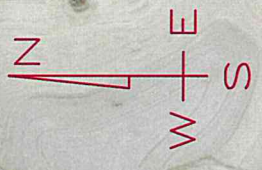
48th ST.

COPPER CREEK

BIG PAPIO CREEK

AREA #1  
OUTLET (84" CMP)

CORNHUSKER RD.



AREA #2  
OUTLET (36" CMP)

66th ST.

GILES RD.

72nd ST.





**LAMP RYNEARSON  
& ASSOCIATES**  
ENGINEERS | SURVEYORS | PLANNERS

14710 W. Dodge Rd., Ste. 100  
Omaha, Nebraska 68154  
[P] 402.496.2498  
[F] 402.496.2730  
www.LRA-Inc.com

May 21, 2012

Mr. Martin Cleveland  
Papio-Missouri River Natural Resources District  
8901 South 154th Street, Suite 1  
Omaha, NE 68138-3621

REFERENCE: Fricke Farm Drainage Study  
Proposal for Engineering and Survey Services

Dear Martin:

Lamp, Rynearson & Associates, Inc. (LRA) is pleased to present this proposal to the Papio-Missouri River Natural Resources District (PMRNRD) to provide engineering and surveying services associated with the Fricke Farm Drainage Study generally located north of Cornhusker Road on the east side of the Big Papillion Creek. Referenced areas are noted on the enclosed Exhibit A. We understand that the scope of our services for this project will include the following tasks:

**Scope of Services**

1. Preliminary Drainage Study

- a. Prepare a preliminary drainage study for the purposes of developing a scope of construction work to addresses several drainage issues including:
  - i. Upgrading of the pipes through the levee at Area 1 & Area 2;
  - ii. Grade control and stabilization of the channels upstream of Area 1 & Area 2;
  - iii. Stabilization of the levee at Area 1 and Area 2;
  - iv. Excavation of the private pond at Area 3; and
  - v. Rehabilitation of the private pond to increase flood storage.
- b. Conduct a thorough site visit with the City of Papillion and the PMRNRD.
- c. Review City of Papillion and PMRNRD storm water runoff design criteria and storm sewer sizing criteria.
- d. Review flood plain requirements at the project site.
- e. Coordinate with EA Sciences, Engineering, and Technology, Inc., our wetlands consultant, in determining the extent of wetlands or jurisdictional waterways that may be located on the site and their impact on this project.
- f. Prepare a delineation and report for the two (2) referenced channels and the farm pond.
- g. Coordinate with the Corps of Engineers to determine requirements for wetland mitigation, grade control options, linear channel stabilization and permitting.

*Leaving a Legacy of Enduring Improvements to Our Communities - PURPOSE STATEMENT*

ENGINEERS SURVEYORS PLANNERS

- h. Prepare a concept schematic drawing of the improvements for the project.
- i. Prepare preliminary development cost estimates for the project.
- j. Coordinate with SID's that contribute storm water runoff to this area to discuss potential cost sharing options and also discuss with the City of Papillion, Sarpy County and the NRD to develop a cost sharing table.
- k. Prepare a preliminary construction schedule for the project.
- l. Meet with the City of Papillion and the PMRNRD to discuss the results of our study.

#### **Assumptions/Exclusions**

- 1. No current survey data will be obtained. Only GIS contours will be used.
- 2. The project will be completed in accordance with the scope outlined above and assumes a "one time design". Any modifications to the design concept after work has been completed will be considered as additional services and authorized in writing by the PMRNRD.
- 3. The private pond will not be considered a high hazard dam.

#### **Schedule**

We are prepared to begin work on the project immediately upon receipt of a signed copy of this proposal. The preliminary drainage study will be completed within approximately five (6) weeks of commencement. After meeting with the City and the PMRNRD to discuss the preliminary study - the final drainage study, concept drawings, cost estimates, construction schedule and meetings with surrounding SID's will be completed within an additional approximately four (4) weeks.

#### **Fees**

We propose to bill for our services on the basis of hourly charge rates plus reimbursable expenses incurred. For the services outlined above, our fees will not exceed \$27,000.

A copy of our current charge rate schedule is attached. This schedule is updated on approximately April 1 of each year.

For requested additional services beyond the scope of services outlined above, an adjustment to the lump sum amount will be negotiated.

**Supplemental Terms and Conditions**

1. Invoices will be submitted monthly. All invoices are due upon presentation.
2. All reports, drawings, specifications, computer files, field data, notes and other documents prepared by Lamp, Ryneerson & Associates, Inc. are instruments of professional service and shall remain the property of Lamp, Ryneerson & Associates, Inc. Lamp, Ryneerson & Associates, Inc. shall retain all common law, statutory and other reserved rights, including, without limitation, the copyrights thereto.
3. This proposal is valid if acceptance of this proposal and work authorization for our services are both received within ninety (90) days from the date of this proposal. After this deadline, our scope of services and fees may be re-evaluated.
4. PMRNRD hereby agrees, by acceptance of this proposal, to limit the liability of Lamp, Ryneerson & Associates, Inc. to PMRNRD and to all construction contractors, arising from Lamp, Ryneerson & Associates, Inc. professional acts, errors or omissions such that total aggregate liability of Lamp, Ryneerson & Associates, Inc. to all those named shall not exceed \$30,000 or Lamp, Ryneerson & Associates, Inc. total fees for services rendered on the project, whichever is greater.

We appreciate the opportunity to present this proposal and look forward to assisting you in the successful completion of this project. We would be glad to discuss any questions you may have on our proposal. Please refer questions to Ken Pollard our Project Manager. If this proposal is acceptable, we ask that you acknowledge by signing below and returning one signed copy to us.

Sincerely,

LAMP, RYNEARSON & ASSOCIATES, INC.



Loren M. Steenson, P.E.  
Senior Vice President



Ken A. Pollard, P.E.  
Senior Project Manager

Enclosures

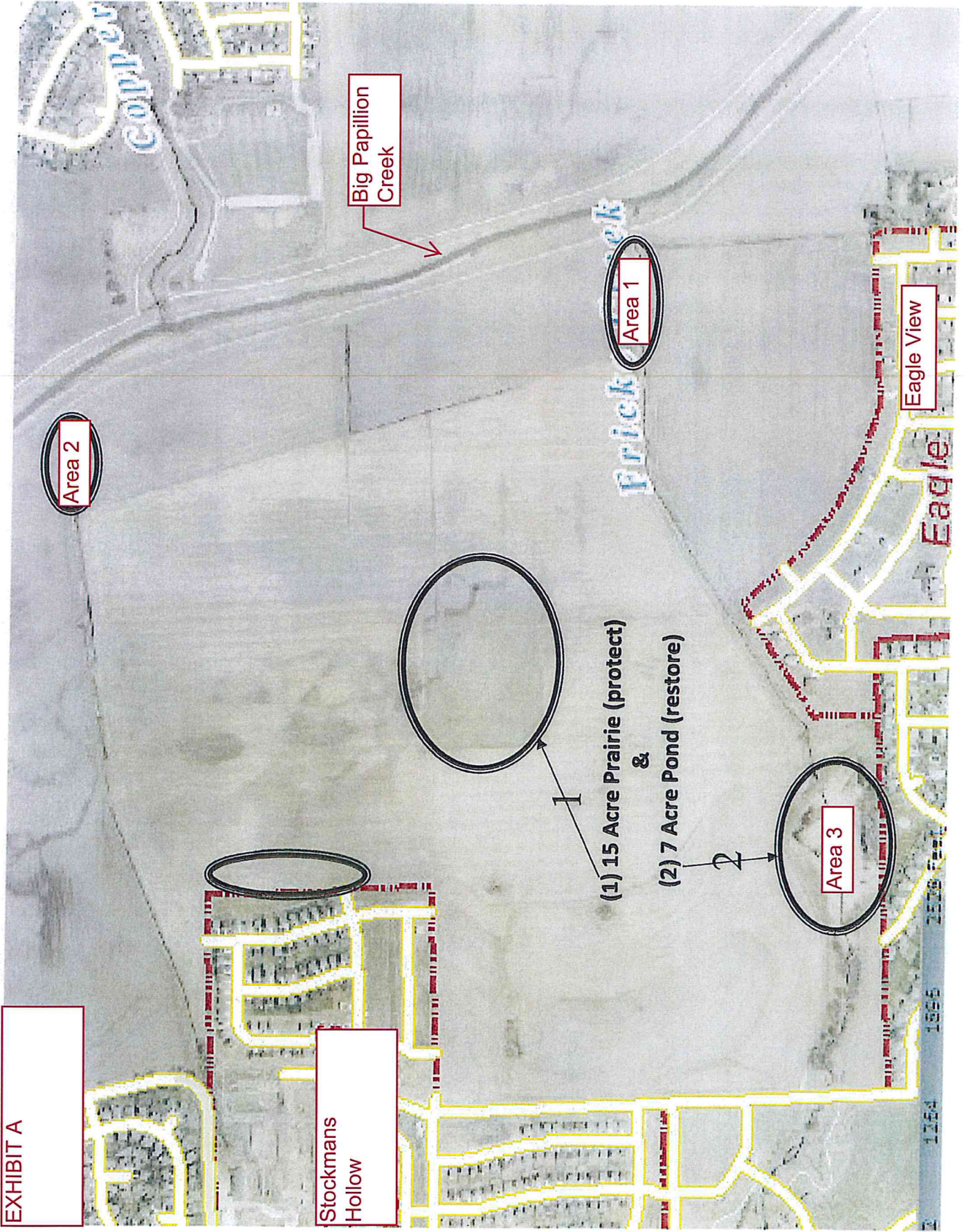
Accepted By:

\_\_\_\_\_  
PMRNRD

\_\_\_\_\_  
Date



EXHIBIT A



Cornhusker Road



OMAHA

Lamp, Ryneerson & Associates, Inc.  
HOURLY RATE SCHEDULE - OMAHA, NEBRASKA  
April 1, 2012 - March 30, 2013

1	<b>PRINCIPALS</b>	<b>HOURLY RATE</b>
2	Principal I	\$ 183.00
3	Principal II	\$ 202.00
4	Principal III	\$ 216.00
5	Principal IV	\$ 255.00
6	Principal V	\$ 271.00
7	<b>ENGINEERING INTERNS</b>	<b>HOURLY RATE</b>
8	Engineering Intern I	\$ 52.00
9	Engineering Intern II	\$ 61.00
10	<b>PROJECT ENGINEERS</b>	<b>HOURLY RATE</b>
11	Project Eng I	\$ 80.00
12	Project Eng II	\$ 86.00
13	Project Eng III	\$ 94.00
14	Project Eng IV	\$ 102.00
15	Sr Project Eng I	\$ 101.00
16	Sr Project Eng II	\$ 113.00
17	Sr Project Eng III	\$ 126.00
18	Sr Project Eng IV	\$ 141.00
19	<b>PROJECT MANAGERS</b>	<b>HOURLY RATE</b>
20	Project Mgr I	\$ 117.00
21	Project Mgr II	\$ 123.00
22	Project Mgr III	\$ 133.00
23	Sr Project Mgr I	\$ 136.00
24	Sr Project Mgr II	\$ 143.00
25	Sr Project Mgr III	\$ 153.00
26	Sr Project Mgr IV	\$ 164.00
27	Sr Project Mgr V	\$ 176.00
28	<b>ENGINEERING/CAD TECHNICIANS</b>	<b>HOURLY RATE</b>
29	Engineering Tech I	\$ 67.00
30	Engineering Tech II	\$ 70.00
31	Engineering Tech III	\$ 75.00
32	Engineering Tech IV	\$ 83.00
33	Sr Engineering Tech I	\$ 81.00
34	Sr Engineering Tech II	\$ 88.00
35	Sr Engineering Tech III	\$ 92.00
36	Sr Engineering Tech IV	\$ 94.00
37	CAD Manager	\$ 110.00
38	<b>PROJECT DESIGNERS AND ADMINISTRATORS</b>	<b>HOURLY RATE</b>
39	Project Designer I	\$ 71.00
40	Project Designer II	\$ 82.00
41	Project Designer III	\$ 87.00
42	Project Designer IV	\$ 95.00



43	Project Administrator I	\$	64.00
44	Project Administrator II	\$	73.00
45	Project Administrator III	\$	80.00
46	Project Administrator IV	\$	89.00
47	<b>OFFICE</b>	<b>HOURLY RATE</b>	
48	Acct Assistant I	\$	51.00
49	Acct Assistant II	\$	60.00
50	Acct Assistant III	\$	69.00
51	Administrative Asst I	\$	51.00
52	Administrative Asst II	\$	59.00
53	Administrative Asst Sr I	\$	69.00
54	Administrative Coord	\$	74.00
55	Client Development	\$	82.00
56	Client Development MGR	\$	155.00
57	Controller	\$	138.00
58	Graphic Designer I	\$	71.00
59	HR Manager	\$	106.00
60	IT Applications Manager	\$	109.00
61	IT Department Manager	\$	150.00
62	IT Intern I	\$	44.00
63	IT Tech I	\$	53.00
64	IT Tech II	\$	64.00
65	Marketing Asst I	\$	44.00
66	Marketing Asst II	\$	53.00
67	Marketing Coord I	\$	62.00
68	Marketing Coord II	\$	71.00
69	<b>SURVEY FIELD CREW</b>	<b>HOURLY RATE</b>	
70	Field Tech Apprentice	\$	45.00
71	Field Tech I	\$	52.00
72	Field Tech II	\$	59.00
73	Field Tech III	\$	66.00
74	<b>PARTY CHIEFS</b>	<b>HOURLY RATE</b>	
75	Party Chief I	\$	67.00
76	Party Chief II	\$	76.00
77	Party Chief III	\$	83.00
78	<b>LAND SURVEYORS</b>	<b>HOURLY RATE</b>	
79	Land Surveyor I	\$	87.00
80	Land Surveyor II	\$	97.00
81	Land Surveyor III	\$	109.00
82	Sr Land Surveyor I	\$	123.00
83	Sr Land Surveyor II	\$	139.00
84	Surv Proj Manager I	\$	80.00
85	Surv Proj Manager II	\$	99.00
86	Surv Proj Manager III	\$	116.00
87	Sr Surv P Man I	\$	126.00
88	Sr Surv P Man II	\$	146.00

89	<b>SURVEY OFFICE/CAD TECHNICIANS</b>	<b>HOURLY RATE</b>
90	Survey Technician I	\$ 68.00
91	Survey Technician II	\$ 73.00
92	Sr Survey Tech I	\$ 76.00
93	Sr Survey Tech II	\$ 83.00
94	<b>CONSTRUCTION OBSERVERS</b>	<b>HOURLY RATE</b>
95	Observer I	\$ 49.00
96	Observer II	\$ 58.00
97	Observer III	\$ 71.00
98	Observer IV	\$ 77.00
99	Observer V	\$ 87.00
100	<b>CONSTRUCTION COORDINATORS</b>	<b>HOURLY RATE</b>
101	Const Coord I	\$ 85.00
102	Const Coord II	\$ 93.00
103	Const Coord III	\$ 102.00
104	<b>CONSTRUCTION ENGINEERS</b>	<b>HOURLY RATE</b>
105	Construction Eng I	\$ 71.00
106	Construction Eng II	\$ 79.00
107	Construction Eng III	\$ 86.00
108	Construction Eng IV	\$ 94.00
109	Construction Eng V	\$ 101.00
110	Sr Construction Eng I	\$ 113.00
111	Sr Construction Eng II	\$ 124.00
112	Sr Construction Eng III	\$ 134.00
113	Sr Construction Eng IV	\$ 145.00
114	Sr Construction Eng V	\$ 155.00
115	<b>GIS</b>	<b>HOURLY RATE</b>
116	GIS Intern I	\$ 44.00
117	GIS Intern II	\$ 51.00
118	GIS Technician	\$ 59.00
119	GIS Specialist I	\$ 67.00
120	GIS Specialist II	\$ 79.00
121	Sr GIS Specialist I	\$ 83.00
122	Sr GIS Specialist II	\$ 91.00
123	Sr GIS Specialist III	\$ 98.00
124	GIS Manager	\$ 138.00
125	<b>3D SERVICES</b>	<b>HOURLY RATE</b>
126	3D Application Specialist IV	\$ 86.00
127	<b>LAND PLANNERS</b>	<b>HOURLY RATE</b>
128	Land Planner I	\$ 68.00
129	Land Planner II	\$ 76.00
130	Land Planner III	\$ 84.00
131	Sr Land Planner I	\$ 97.00
132	Sr Land Planner II	\$ 110.00
133	Sr Land Planner III	\$ 123.00
134	Sr Land Planner IV	\$ 139.00
135	Sr Landscape Architect V	\$ 155.00



These charges include full compensation for payroll costs, general overhead, administration and anticipated profit on labor. Charges for items other than labor which are applicable to the project are listed on Schedule #2.

Personnel usually perform duties related to their classification; however, in the interest of efficiency, personnel with diversified experience may perform several types of work; in all cases, charges will be made according to payroll classification and not according to the type of work performed.

---

**LAMP, RYNEARSON & ASSOCIATES, INC.  
MISCELLANEOUS CHARGES – OMAHA, NEBRASKA**

**A. SUBSISTENCE:**

Subsistence for employees away from headquarters shall be chargeable in accordance with the per diem schedule published by the Corps of Engineers (Travel Bulletin No. 91-01). (A copy will be provided upon request.)

**B. TRANSPORTATION:**

Automobile transportation shall be charged for at the maximum IRS employee reimbursable rate per mile plus 15% for travel in connection with work on the project. Costs to Lamp, Ryneerson & Associates, Inc., for commercial travel shall be chargeable at the actual cost incurred by Lamp, Ryneerson & Associates, Inc.

**C. MATERIALS:**

All materials other than normal office supplies which are used by Lamp, Ryneerson & Associates, Inc., in connection with the rendering of services shall be chargeable at actual cost plus 15 percent to cover general overhead and administration.

**D. REPRODUCTIONS:**

All direct process reproduction work performed by Lamp, Ryneerson & Associates, Inc., shall be charged at the locally accepted commercial rate for such work. All outside photographic and direct-process reproduction costs advanced by Lamp, Ryneerson & Associates, Inc., in connection with the rendering of services shall be charged at actual cost plus 15 percent to cover general overhead and administration.

**E. SPECIAL EQUIPMENT:**

The following items of special equipment, when used by Lamp, Ryneerson & Associates, Inc., shall be charged for at the following rates:

Leica TCRP1201 Total Station	20.00/Hr.		
Leica TCM Total Station	15.00/Hr.		
Leica TCA Total Station w/RCS	30.00/Hr.		
Leica GPS Base & Rover			
Geodetic	62.00/Hr.		
Staking/Topographic	33.00/Hr.		
4X4 ATV Polaris Ranger	20.00/Hr.		
Plots (Color)	2.50/SF (bond)	6.00/SF (mylar)	6.00/SF (photo paper)
Plots (B&W)	0.15/SF (bond)	1.10/SF (mylar)	

All of the above rates are exclusive of operator.

Specialty material exclusive of above Plotter Rates.

**F. FILING FEES AND OTHER COSTS ADVANCED:**

All filing or permit fees and other similar outside costs which are advanced or paid by Lamp, Ryneerson & Associates, Inc., shall be chargeable at actual cost plus 15 percent to cover general overhead and administration.

Periodically, this schedule may be revised and updated by Lamp, Ryneerson & Associates, Inc., who reserves the right to substitute the new miscellaneous charges schedule upon 30 days' notice.