

Agenda Item: 11.

## MEMORANDUM

TO: Programs, Projects and Operations Subcommittee

FROM: Martin P. Cleveland, Construction Engineer

SUBJECT: Thompson Creek Levee Improvement Project – Relocation Agreement with Omaha Public Power District

DATE: June 30, 2014

---

The Thompson Creek Levee Improvement Project extends between 66<sup>th</sup> and 60<sup>th</sup> Street and south of Harrison Street in La Vista, NE. The current levees were built in 1960-1970 period, prior to the existence of District and the levee maintenance was assumed by the District after its formation in 1975. The levee side slopes are very steep and the levees are being eroded by creek bank erosion. The levees have been deemed “unacceptable” by the Corps of Engineers (USACE) and do not meet current levee safety standards. The District is required to upgrade the levees in order to stay in the USACE Public Law 84-99 cost share program for repair assistance (75%/25%) after flood events. The proposed project consists of relocating levee away from the creek, constructing riverside berms and levees with 3:1 side slopes. In addition, a LaVista sanitary sewer, Omaha Public Power District (OPPD) electrical transmission lines and LaVista recreation facilities at the base or in the slope of the current levee will have to be relocated northward away from the new left bank (north side) levee. Attached are maps and photos related to the project.

Enclosed is the proposed agreement with OPPD for relocation of a transmission and distribution electrical power lines northward of the relocated north side levee. The agreement provides for OPPD to acquire easements for relocated power line, design and construct the new power line and be reimbursed by the District for its work. The current distribution and transmission power lines will be combined into one power line during this relocation work. The OPPD cost estimate for the relocation work is \$326,000.

It is Management's recommendation that the Subcommittee recommend to the Board of Directors that the General Manager be authorized to execute the proposed Agreement with the Omaha Public Power District for relocation of OPPD facilities impacted by the Thompson Creek Levee Improvement Project, subject to changes deemed necessary by the General Manager and approval as to form by District legal counsel.

AGREEMENT

BETWEEN

THE OMAHA PUBLIC POWER DISTRICT

AND THE

PAPIO-MISSOURI NATURAL RESOURCES DISTRICT

\*\*\*\*\*

RELOCATON OF TRANSMISSION FACILITIES ON EASEMENT  
THOMPSON CREEK LEVEE FROM 66<sup>TH</sup> ST TO BIG PAPIO CREEK CONFLUENCE  
PROJECT # 511

## AGREEMENT

### THOMPSON CREEK LEVEE FROM 66<sup>TH</sup> ST TO BIG PAPIO CREEK CONFLUENCE PROJECT # 511

#### OMAHA PUBLIC POWER DISTRICT PAPIO-MISSOURI NATURAL RESOURCES DISTRICT RELOCATION OF TRANSMISSION FACILITIES ON EASEMENT

THIS AGREEMENT is made and entered into by and between the Omaha Public Power District hereinafter referred to as the "Utility" and Papio-Missouri Natural Resources District hereinafter referred to as the "Papio - MRNRD".

#### WITNESSETH:

WHEREAS, the Papio - MRNRD has plans for the reconstruction of the Thompson Creek Levee from 66<sup>th</sup> St to Big Papio Creek Confluence, and

WHEREAS, said construction will be undertaken under the project designation Project # 511 (the "Project"), and

WHEREAS, the agreement for the Project contemplates construction for the relocation of the Utility's transmission facilities easement on Thompson Creek Levee from 66<sup>th</sup> St to Big Papio Creek Confluence the Utility, as set forth in the Project plans and specifications, and

WHEREAS, the Utility's transmission facilities are located within easement and will be relocated, with the understanding that the Papio - MRNRD will pay the Utility 100 percent of all transmission facilities relocation in easement and construction engineering costs incurred in connection with the Project.

NOW THEREFORE, in consideration of the foregoing recitals and the promises and covenants herein, the parties hereto agree as follows:

SECTION 1. The Utility has designed transmission facility relocations according to the Utility's specifications and as set forth in the Project plans and specifications.

SECTION 2. The Papio - MRNRD shall pay the Utility 100 percent of the actual and reasonable cost of constructing the relocations of all transmission facilities in easement plus any additional required construction engineering. This cost is estimated to be \$279,500.00.

SECTION 3. The Papio - MRNRD shall pay the Utility 100 percent of the actual and reasonable cost of new easements for the relocations of transmission facilities. This cost is estimated to be \$46,500.00.

SECTION 4. The Papio - MRNRD shall make payment to the Utility within thirty (30) days after receipt of billing from the Utility. When the work is completed and all costs accumulated, the Utility will submit a final statement to the Papio - MRNRD showing the refund due or payment due from the Papio - MRNRD. The parties agree to make final settlement within thirty (30) days after the Papio - MRNRD receives the final statement.

IN WITNESS WHEREOF, the parties hereto have caused these presents to be executed by their proper officials there unto duly authorized as of the dates below indicated.

EXECUTED by the Utility this 23<sup>rd</sup> day of June, 2014

ATTEST:

OMAHA PUBLIC POWER DISTRICT

  
\_\_\_\_\_  
Lead Utilities Coordinator                      Date 6/23/14

EXECUTED by the Papio-Missouri Natural Resources District  
this \_\_\_\_\_ day of \_\_\_\_\_, 20\_\_\_\_

## EXHIBIT "A"

P-MR NRD Thompson Creek Levee (66th St to Big Papio Creek Confluence)  
OPPD Transmission Relocations  
Preliminary Cost Estimate (without easement costs)

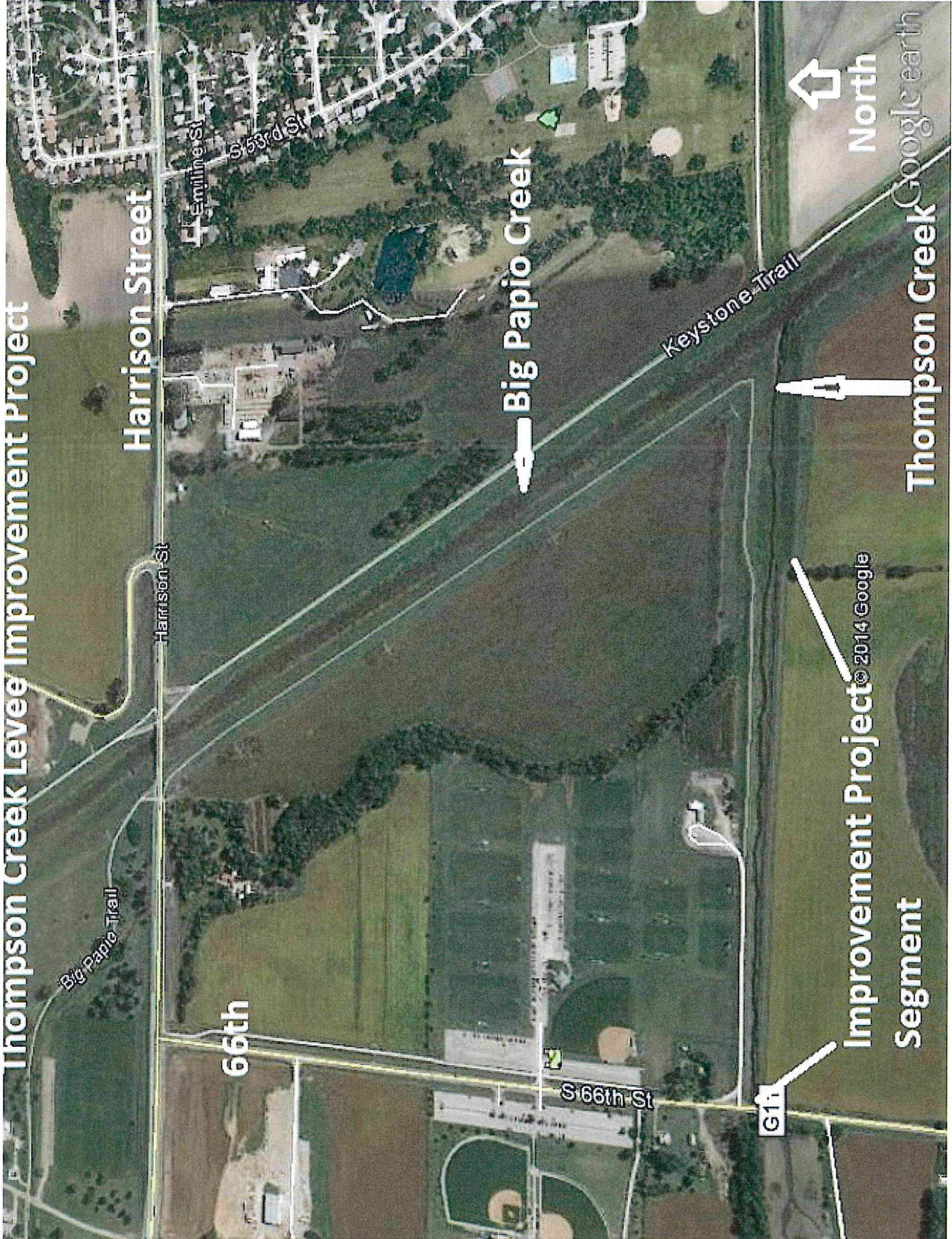
Line 26 (wood monopole line)  
69 kV  
Circuit 635  
Remove 8 existing structures  
Modify 1 existing deadend  
Install 7 new wood tangent structures  
Install 1 new wood deadend structure  
Material: \$85,000  
Construction labor: \$130,000  
Subtotal: \$215,000

Subtotal: \$215,000  
Overheads (20%): \$43,000  
Contingency (10%): \$21,500  
Total: \$279,500

Prepared by Shane Hanson, EI Engineer, Transmission Engineering and T&D Land  
Rights 22MAY2014



Thompson Creek Levee Improvement Project



Harrison Street

Harrison St

66th

Big Papio Creek

Keystone Trail



North

Thompson Creek

Improvement Project

Segment

G11

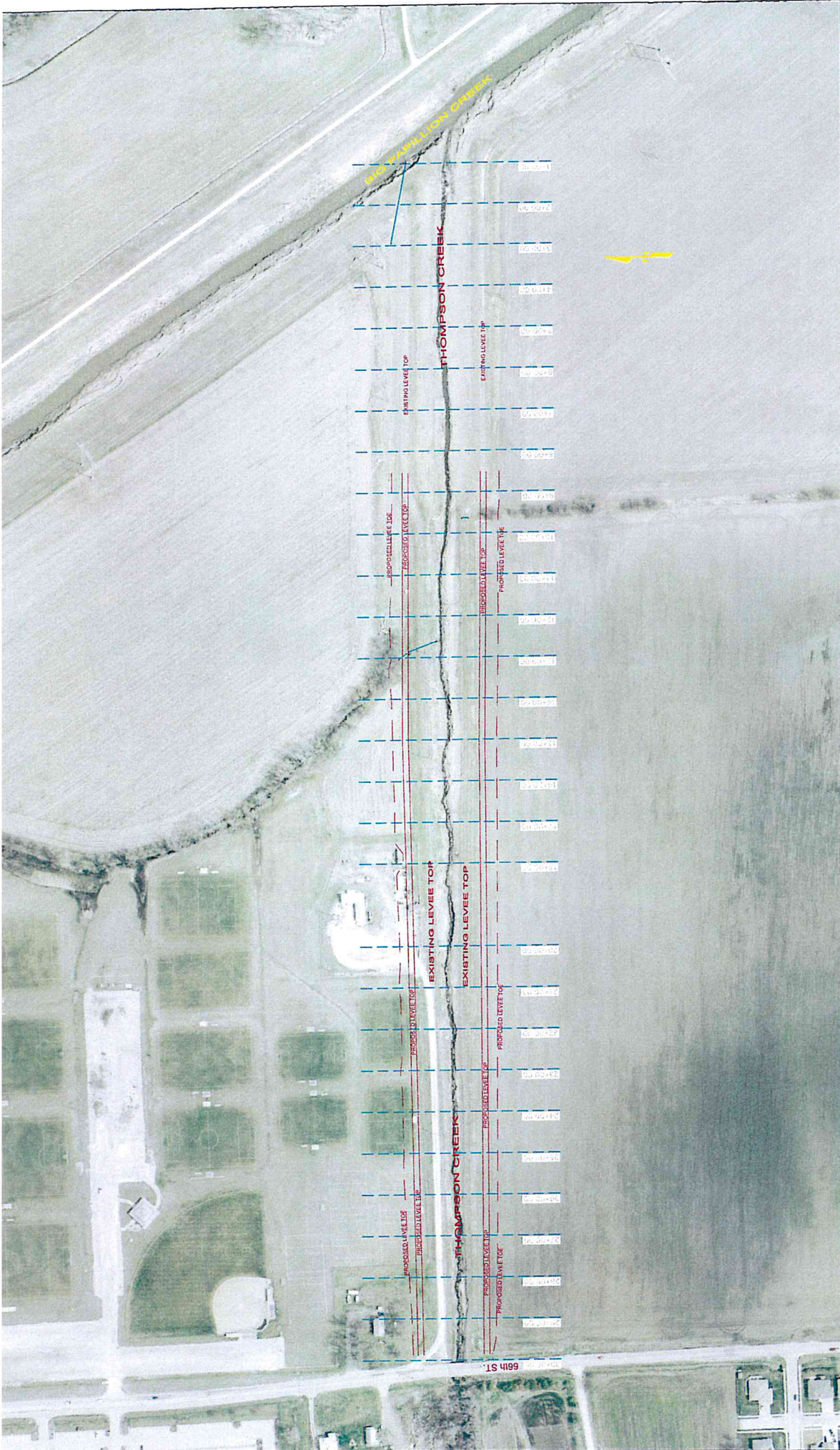
S 66th St

Big Papio Trail

© 2014 Google

Google earth





**PAPJO-MISSOURI RIVER NATURAL RESOURCES DISTRICT**  
 8901 S 154TH STREET  
 OMAHA, NE 68136-3921  
 PHONE: 402-895-5544  
 FAX: 402-895-5543  
[www.papjoind.org](http://www.papjoind.org)

**THOMPSON CREEK  
 LEVEE IMPROVEMENT PROJECT  
 PLAN MAP**

DATE: 2/20/24  
 DRAWN BY: M  
 SCALE: NO SCALE  
 SHEET: 1 OF 11









	EXISTING GROUND	PROPOSED IMPROVEMENTS
1.		
2.		
3.		
4.		
5.		
6.		
7.		
8.		
9.		
10.		
11.		
12.		
13.		
14.		
15.		
16.		
17.		
18.		
19.		
20.		
21.		
22.		
23.		
24.		
25.		
26.		
27.		
28.		
29.		
30.		
31.		
32.		
33.		
34.		
35.		
36.		
37.		
38.		
39.		
40.		
41.		
42.		
43.		
44.		
45.		
46.		
47.		
48.		
49.		
50.		
51.		
52.		
53.		
54.		
55.		
56.		
57.		
58.		
59.		
60.		
61.		
62.		
63.		
64.		
65.		
66.		
67.		
68.		
69.		
70.		
71.		
72.		
73.		
74.		
75.		
76.		
77.		
78.		
79.		
80.		
81.		
82.		
83.		
84.		
85.		
86.		
87.		
88.		
89.		
90.		
91.		
92.		
93.		
94.		
95.		
96.		
97.		
98.		
99.		
100.		

**THOMPSON CREEK  
LEVEE IMPROVEMENT PROJECT**  
*Leading Upstream*

**PAPIO-MISSOURI RIVER NATURAL RESOURCES DISTRICT**  
8901 S. 154TH STREET  
OMAHA, NE 68135-3621  
OFFICE: 402-444-6222  
FAX: 402-856-6543  
[www.papionrd.org](http://www.papionrd.org)