

MEMORANDUM

TO: THE BOARD

SUBJECT: General Manager's Report

DATE: April 6, 2012

FROM: John Winkler, General Manager

- A. **INFORMATION/EDUCATION REPORT:** The I & E Report detailing Information and Education activities for the month of March 2012, is attached for your review.
- B. **PERSONNEL/MISCELLANEOUS ITEMS:**
1. The March 20th and April 3rd editions of the USACE update on the 2011 Missouri River Levee Rehabilitation Project is attached for your review.
 2. The MAPA "What's Happening" Newsletter for the Month of March is attached for your review. Comments about the environmentally friendly features of the new Washington County Natural Resources Center were noted.
 3. The Papillion Creek Watershed Partnership Information Update Newsletter for March is attached for your review.
 4. **John "Pat" McEvoy** has been hired to replace Bill Warren as the Assistant Operations & Maintenance Superintendent. Pat will begin work on April 23, 2012. I look forward to working with Pat and wish him luck in his new position.
- C. **REPORT ON PURCHASES – CONSTRUCTION SERVICES, PROFESSIONAL SERVICES AND PERSONAL PROPERTY:** Pursuant to Board direction, attached is a report indicating construction services, professional services and personal property purchases for the month of March 2012. Please review this report and contact me if you have any questions.
- D. **CURRENT AND ON-GOING PROJECTS – P-MRNRD LEGAL COUNSEL:** Attached is a copy of the current and on-going projects for District Legal Counsel, Paul Peters, as of March 9, 2012. I would ask each Director to review this listing. If you have any questions, please feel free to contact me.
- E. **PAPILLION CREEK WATERSHED PARTNERSHIP REPORT:** The March, 2012 Papillion Creek Watershed Partnership Monthly Update is attached for your review. The next Partnership meeting will be held on April 26, 2012, at 10:00 a.m. at the NRC.
- F. **NEWS CLIPS:**
- ✓ March 6, 2012, Omaha World Herald article, FEMA certification will keep businesses and homeowners from having to buy flood insurance
 - ✓ March 12, 2012, Omaha World Herald article, Wanahoo debut delayed till April 28

- G. **DISPOSAL OF EXCESS TRAILER HOME LOCATED AT THE PIGEON/JONES SITE PROJECT LOCATION:** The District has received an offer from the Welch Family of \$500 to purchase and remove a 1982 trailer home that is currently setting at the Pigeon/Jones Site 15 Project Location. The offer is attached for your review.

March, 2012 Information/Education Report

Information

- Began search for new web site professional assistance company
- Developed packets of NRD information for board candidates
- Continued work on Flood Prevention brochure
- Installed interpretive signs at river access sites
- Continued archiving of photos and slides
- Updated Facebook page
- Continued work on Spectrum newsletter
- Continued planning for Spring/Summer Public Service campaign

Education

- **Programming:**
 - **3/6-** Crestridge Elementary, Animal Adaptations (5th grade) - 45 students/2 teachers
 - **3/7-** Holy Name Nature Club, Animal Adaptations (1st-5th grade) - 12 students/1 teacher
 - **3/7-** Metro Regional Envirothon (High school) - 75 kids/15 adults
 - **3/13-** Morton Nature Night (1st-6th)- roughly 250 in attendance
 - **3/13-** Legacy Primary School (Pre-K)- Critter Talk- 60 students/5 teachers
 - **3/14-** Legacy Primary School (Pre-K)- Critter Talk-30 students/4 teachers
 - **3/17-** Metropolitan Science and Engineering Fair- Science Judge- 30 students
 - **3/20-** Holy Name Nature Club (1st-5th)- 12 students/1 teacher
 - **3/26-** Earth Wellness Festival- (1st-6th)- Camouflage- 138 students/ 9 teachers
 - **3/27-** Earth Wellness Festival- (1st-6th)- Camouflage- 78 students/ 7 teachers
 - **3/29-** Sandoz Nature Night (1st-6th)- roughly 275 in attendance
 - **3/16-** Iowa Association of Naturalists Conference, Presentation on MORE Nature
- **Meetings**
 - **3/31-** NAI Committee Meeting- Fontenelle Nature Center
 - **3/9-** NAI Region 5 Conference location tour- Mahoney State Park
 - **3/22-** NAI Region 5 Conference location tour- The Leadership Center of Aurora
 - **3/14-** MORE Nature Committee Meeting
 - **3/21-** FNA Board Meeting
 - **3/5-** Water Works Committee Meeting
 - **3/5-** Zoo School Job Shadow Meeting
 - **3/9—**Children in Nature Network Conference Call
 - **3/23-** Omaha Children's Museum/MUD Exhibit on Sewers—Keep Omaha Beautiful
- **Planning**
 - NRD Summer Day Camps, confirmation e-mails, presenters
 - Water Works selection of schools, mailings, data base, presenters
 - MORE Nature Calendar, FaceBook Page, website
 - Earth Day Omaha, Children's Outdoor Bill of Rights
 - April Nature Nights, promotion, flyers, school coordination



US Army Corps
of Engineers

2011 MISSOURI RIVER LEVEE REHAB UPDATE

Missouri River Levee Unit R-613
South of Bellevue, Nebraska

Readiness Branch

(Updated April 3, 2012)

Omaha District

Schedule

| | |
|------------------------------|---------------|
| Request for Assistance: | Aug. 15, 2011 |
| Damage Survey Report: | Sep. 6, 2011 |
| Funding Received: | Jan. 23, 2012 |
| Request for Proposal Issued: | Jan. 26, 2012 |
| Contract Award: | Feb. 14, 2012 |
| Construction Start Date | |
| (Initial Repairs): | Mar. 4, 2012 |
| (Follow-on Repairs): | June 2012* |
| Construction End Date | |
| (Initial Repairs): | Mar. 26, 2012 |
| (Follow-on Repairs): | Nov. 1, 2012* |

*These dates are estimates and are based on many factors including contract award, real estate, availability of materials, weather, etc.

Progress

Location: _____ Progress: _____



Project Overall Map
Missouri River Levee Unit R-613
South of Bellevue, NE

Award

- Contract for initial repairs was awarded February 14, 2012 with a notice to proceed issued February 23, 2012.
- Initial repairs included seeding. These repairs were substantially complete March 26, 2012. Final checklist inspection will be held on April 3, 2012.
- Follow-on activities include repairs to drainage structures. These repairs are estimated to be complete by November 1, 2012.

Note: Engineering/design and construction funding received by the Omaha District for Increment I will be used to repair areas identified during the damage survey report. Repairs will return these areas to pre-disaster conditions.

Current Progress

- Contract for follow-on repairs to two drainage structures was advertised the week of March 19, 2012.



US Army Corps
of Engineers

2011 MISSOURI RIVER LEVEE REHAB UPDATE

Missouri River Levee Unit R-616
Bellevue, Nebraska

Readiness Branch

(Updated April 3, 2012)

Omaha District

Schedule

| | |
|---------------------------|----------------------------|
| Request for Assistance: | Oct. 24, 2011 |
| Damage Survey Report: | Aug. 20, 2011/Dec. 1, 2011 |
| Funding Received: | Jan. 23, 2012 |
| Contract Award: | Feb. 9, 2012 |
| Notice to Proceed Issued: | Feb. 15, 2012 |
| Construction Start Date | |
| (Initial Repairs): | Feb. 15, 2012 |
| (Follow-on Repairs): | June 2012* |
| Construction End Date | |
| (Initial Repairs): | Mar. 27, 2012 |
| (Follow-on Repairs): | Nov. 30, 2012* |

*These dates are estimates and are based on many factors including contract award, real estate, availability of materials, weather, etc.

Award

- Notice to proceed (NTP) on initial repairs was issued on February 15, 2012. A scope of work is currently being prepared for follow-on repairs.
- Initial repairs included riverside slope restoration, levee crest repair, drainage structure outlet restoration, landside slope restoration and erosion control on the riverside levee face. These repairs were substantially completed on March 27, 2012.
- Final inspection will be held on April 3, 2012.
- Follow-on activities and repairs include geotechnical investigations, riverside scour repair, repair of damaged drainage structures and construction of additional seepage berms based on the geotechnical investigations. These repairs will be started June 2012 and are estimated to be complete by November 30, 2012.

Note: Engineering/design and construction funding received by the Omaha District will be used to repair areas identified during the damage survey report. Repairs will return these areas to pre-disaster conditions.

Current Progress

- Real estate permanent easements will be needed in order to complete follow-on seepage berm construction.



Project Overall Map
Missouri River Levee Unit R-616
Bellevue, NE



US Army Corps
of Engineers

2011 MISSOURI RIVER LEVEE REHAB UPDATE

Missouri River Levee Unit R-613
South of Bellevue, Nebraska

Readiness Branch

(Updated March 20, 2012)

Omaha District

Schedule

| | |
|------------------------------|----------------|
| Request for Assistance: | Aug. 15, 2011 |
| Damage Survey Report: | Sep. 6, 2011 |
| Funding Received: | Jan. 23, 2012 |
| Request for Proposal Issued: | Jan. 26, 2012 |
| Contract Award: | Feb. 14, 2012 |
| Construction Start Date | |
| (Initial Repairs): | Mar. 4, 2012 |
| (Follow-on Repairs): | June 2012* |
| Construction End Date | |
| (Initial Repairs): | Mar. 30, 2012* |
| (Follow-on Repairs): | Nov. 1, 2012* |

*These dates are estimates and are based on many factors including contract award, real estate, availability of materials, weather, etc.

Progress

Location: _____ Progress: _____



Project Overall Map
Missouri River Levee Unit R-613
South of Bellevue, NE

Award

- Contract for initial repairs was awarded February 14, 2012 with a notice to proceed issued February 23, 2012.
- Initial repairs include seeding, which is estimated to be complete by March 30, 2012 (weather dependant).
- Follow-on activities include repairs to drainage structures. These repairs are estimated to be complete by November 1, 2012.

Note: Engineering/design and construction funding received by the Omaha District for Increment I will be used to repair areas identified during the damage survey report. Repairs will return these areas to pre-disaster conditions.

Current Progress

- Contract for follow-on repairs to two drainage structures was ready to advertise the week of March 12, 2012.



US Army Corps
of Engineers

2011 MISSOURI RIVER LEVEE REHAB UPDATE

Missouri River Levee Unit R-616
Bellevue, Nebraska

Readiness Branch

(Updated March 20, 2012)

Omaha District

Schedule

| | |
|---|----------------------------|
| Request for Assistance: | Oct. 24, 2011 |
| Damage Survey Report: | Aug. 20, 2011/Dec. 1, 2011 |
| Funding Received: | Jan. 23, 2012 |
| Contract Award: | Feb. 9, 2012 |
| Notice to Proceed Issued: | Feb. 15, 2012 |
| Construction Start Date (Initial Repairs): | Feb. 15, 2012 |
| (Follow-on Repairs): | June 2012* |
| Construction End Date (Initial Repairs): | Mar. 30, 2012* |
| (Follow-on Repairs): | Nov. 30, 2012* |

*These dates are estimates and are based on many factors including contract award, real estate, availability of materials, weather, etc.



Project Overall Map
Missouri River Levee Unit R-616
Bellevue, NE

Award

- Notice to proceed (NTP) on initial repairs was issued on February 15, 2012. A scope of work is currently being prepared for follow-on repairs.
- Initial repairs include riverside slope restoration, levee crest repair, drainage structure outlet restoration, landside slope restoration and erosion control on the riverside levee face. These repairs are estimated to be complete by March 30, 2012.
- Follow-on activities and repairs include geotechnical investigations, riverside scour repair, repair of damaged drainage structures and construction of additional seepage berms based on the geotechnical investigations. These repairs will be started May 31, 2012 and are estimated to be complete by November 30, 2012.

Note: Engineering/design and construction funding received by the Omaha District will be used to repair areas identified during the damage survey report. Repairs will return these areas to pre-disaster conditions.

Current Progress

- Sponsor has removed the sand and sandbags from the levee crest - seeding and flap gate clean out can now proceed.
- Real estate permanent easements will be needed in order to complete follow-on seepage berm construction.

What's Happening

FOR COMMUNITY LEADERS

MARCH 2012

MAPA Executive Director search begins

Paul Mullen, who has been with MAPA since 1972 and MAPA Executive Director since 2003, plans to retire later this year. A search committee, formed to look nationwide for a new director, began advertising for the position this month in local and national publications and websites. The advertisement may be viewed on the following page.

This is an exciting time for MAPA as it is involved in a number of key regional-level planning initiatives, including the Heartland 2050 Regional Vision, the Heartland Connections Project (Regional Transit Vision and a Regional Bicycle - Pedestrian Complete Streets project), the Comprehensive Economic Development Strategy, and many local projects and programs. The incumbent Director will be charged with the oversight of development and implementation of all these projects.

External Travel Study to begin later this year

MAPA will undertake an External Travel Survey later this year. The objective of this survey is to obtain more accurate information on the number of trips and travel characteristics into and out of the MAPA Metropolitan Planning Organization (MPO) Area. This data will provide a critical data source to use in the development and validation of the MAPA travel demand model for travel forecasting and other transportation planning activities. The survey will analyze the travel patterns of vehicular traffic entering, exiting, or passing through the MAPA travel demand area. The Iowa Department of Transportation (DOT) and Nebraska Department of Roads (NDOR) are partnering with MAPA on the study, and with MAPA, are contributing the required local match for the federal transportation funds being utilized.

This survey will be conducted because MAPA's travel demand model and other forecasting and data-related activities will be utilized in a number of important upcoming initiatives in the MAPA region. It is imperative that the tools being used to analyze and evaluate various alternatives and scenarios are based on solid data. First, MAPA was recently awarded a HUD Sustainable Communities Regional Planning Grant to conduct a regional vision. Over a three-year period, MAPA will lead a consortium of 300+ partners in the region to develop a regional plan addressing land use, housing, transportation, infrastructure, economic development and public health. At the heart of the Regional Vision will be a data-driven scenario planning exercise that will assist the



metro area in creating a future consensus vision for growth and development.

In conjunction with the Regional Vision, MAPA is leading Heartland Connections, an integrated multi-modal planning initiative consisting of two key elements: a regional Bicycle-Pedestrian and Complete Streets Corridor Identification Plan and a Regional Transit Vision. Additionally, Metro transit, in coordination with the City of Omaha, is currently undertaking an Alternatives Analysis to evaluate transit solutions in the downtown to midtown areas, extending west to include the Crossroads and Aksarben areas.

The Nebraska Department of Roads (NDOR) is considering a new study to evaluate future needs along the freeway system in the Omaha metro area. In recent years, studies along

(Continued on page 2)

METROPOLITAN AREA PLANNING AGENCY

JOB POSTING FOR EXECUTIVE DIRECTOR

(Salary Range of \$91,700 to \$121,100)

The Metropolitan Area Planning Agency (MAPA) that comprises the five county region surrounding the Omaha/Council Bluffs area seeks a highly qualified and dynamic leader to serve as its Executive Director.

MAPA is the Metropolitan Planning Organization (MPO) and Economic Development District (EDD) for an 800,000+ population area and has an operating budget of \$2.8 million and a staff of 16 FTE. The position is responsible for all Agency operations in the areas of community/economic development, transportation planning, census and demographic analysis, environmental issues and implementation of programs and policies that serve as a resource to local governments.

The successful applicant will be responsible for staff development and management, budget preparation and administration, reports and presentations on community and economic development, transportation, census and demographic services and the analysis of related data. Reporting to a Council of Officials representative of the five county region and a Board of Directors, the Executive Director will be

responsible for the day to day management of the Agency and interaction with the Board of Directors.

Applicants must possess a masters degree in planning or public administration plus six years of progressively responsible experience or a masters degree in a related field and seven years of progressively responsible experience. A bachelor's degree in a related field and eight years of progressively responsible experience will be considered as acceptable.

Knowledge of federal, state and local legislation, guidelines and procedures is desirable. Ability to organize and direct the work of professional and technical personnel; establish and maintain effective working relationships with local, state and national officials and the public; ability to express ideas effectively are key elements for this position.

Applicants must apply at the Douglas County Human Resources website at <http://www.co.douglas.ne.us/county/hr/employment>.

The position closes at 4:30 p.m. CDT on Friday, April 20, 2012.

The Metropolitan Area Planning Agency (A Council of Governments) is a voluntary association of local governments created in 1967 under the terms of an interlocal agreement to provide a forum for coordinating local planning and development activities. As an organization of local governments, MAPA exists to help member governments address problems which are regional in scope and which may cross jurisdictional boundaries. AN EEO/AAP EMPLOYER.

External Travel Study (continued from page 1)

the freeway system have also been conducted through MAPA's Beltway Feasibility Study, the Council Bluffs Interstate System Improvements, and the I-80 and Pflug Road Interchange environmental work. These studies highlighted the importance of proper traffic data and forecasting along the freeway system.

MAPA participated in the add-on to the 2009 National Household Travel Survey (NHTS), which provided over 1,200 additional surveys in Douglas and Sarpy counties in Nebraska and Pottawattamie County in Iowa. This was the first comprehensive travel survey undertaken in the MAPA region since the 1960s and produced a statistically-significant sample of household travel behavior. The NHTS provided an excellent source of data but it didn't capture external traffic patterns such as vehicles entering, exiting, or passing through the MAPA MPO.

For information about this upcoming External Travel Survey or any of the other studies mentioned in this article, Please contact MAPA Transportation & Data Manager Greg Youell at MAPA or email him at gyouell@mapacog.org

CPT-HST Committee holds quarterly meeting

The Coordinated Public Transit-Human Services Transportation (CPT-HST) Committee held its quarterly meeting in March at MAPA. Members were reminded that applications for Job Access Reverse Commute (JARC) & New Freedom grants are due April 15. Before the next round, due October 15, the application form will be updated to include more information from applicants. MAPA will contact two or three committee members to help with this update. Applicants will also have to follow all the requirements in Title VI and DBE from now on.

MAPA is currently working on an update to the new MAPA Disabled Business Enterprise (DBE) Plan due by March 28 and the Title VI Plan due May 7. The Title VI Plan has been conditionally approved but changes must be made before final approval by the Federal Transit Administration (FTA). However, with the conditional approval, JARC & New Freedom funds, which have been held up, will now be released.

(Continued on page 3)

Happenings around the Region



Pottawattamie County Conservation and the County-wide Trail Planning Committee in partnership with the National Park Service's Rivers, Trails and Conservation Assistance Program held listening sessions during March in **Neola, Carson, Avoca** and **Council Bluffs** to gather public input on trails. Attendees discussed the future of multi-use trails throughout the county and drew their ideas about the proposed locations of the county's future trails on a map. These maps will be merged into one county-wide comprehensive plan for trails.

A new **Washington County** Natural Resources Center opened in **Blair** last fall. The building features many environmentally friendly features, including natural light and windows in every room, a geothermal well field for heating and cooling, and a green roof. Plants on the roof use stormwater and the extra water is funneled to a rain garden, ultimately reducing stormwater runoff.

The Benson area in **Omaha** has begun a yearlong celebration of its 125th birthday. Benson was founded in 1887 and grew to 5,000 people before being annexed by **Omaha** in 1917. The area is one of Omaha's largest neighborhoods and today has become a location for art and music. Parades and festivals will be highlights of the festivities this year.

CPT-HST Committee (continued from page 2)

Lee Myers, MAPA Mobility Coordinator, presented his outline of activities through June 2013 having to do with the Veterans grant and the Mobility Manager grant. Metro's Kelley Shadden reported on the bus company's activities. He said Metro ridership is up and its Moby service has added an automobile for ambulatory riders. Heartland Family Service gave an update on its very successful Ways to Work car loan program, which was partly funded by a JARC grant. Council Bluffs is waiting for word on its application for a grant from the Iowa West Foundation to market its bus system. Omaha Ambulance, American Ambulance, and Medics at Home merged February 1 and have already grown and need to hire more employees. More information about any of these topics can be gained by talking to Nick Weander or Lee Myers at MAPA.

The next meeting of the committee is May 10 at 10:30 a.m. at MAPA. All interested parties are invited to attend.

Data Resources meeting rescheduled

The MAPA Data Resources meeting scheduled for April 13 has been rescheduled for May 4 at MAPA. Amy Maher with the Omaha Public Library will give an interesting and enlightening presentation on library services and activities at the public library. Members will receive a notice about the change in dates. Others that would like to hear the presentation are welcome to attend.



Connect Iowa: Public Kickoff Coming Soon

The Connect Iowa broadband initiative is making progress in our Iowa counties. Meetings were held in March with community leaders from both Pottawattamie and Mills counties to introduce the program and organize a public kickoff meeting to begin collecting information for the assessment.

The assessment is broken down into three categories: access, adoption, and use. Access focuses on the current availability of broadband network systems and their service speeds, competition, and technology (i.e. fiber, DSL, cable). Adoption looks at the barriers to purchase or utilize broadband services such as a lack of digital literacy programs, computer ownership, and awareness of available computer resources. The third and final portion of the assessment identifies how broadband is being utilized by local residents, businesses and institutions, and its impact on community betterment throughout the county.

At this time no official dates are set for these upcoming kickoff meetings so please check www.mapacog.org events calendar for future updates or contact Clint Sloss at csloss@mapacog.org for further details. In addition a press release for these kickoff meetings will be sent to newspapers in Pottawattamie and Mills counties.

CALENDAR

April

11...11:00 a.m. - RPA
Policy/Tech Committee

18...8:30 a.m. - Finance Committee
3:00 p.m. - Project Review

20...10:00 a.m. - Transportation

26...1:30 p.m. - Board of Directors

Region Scene

The 100-foot tall Linoma Lighthouse has been a landmark along U.S. Highway 6 between Omaha and Lincoln since it was built in 1939 to mark a once-popular, private recreation area located around an artificial lake in Sarpy County. The area had fallen out of favor in recent years, but now improved under new ownership, it opened last summer, and the owners plan more changes this year. In 2003, Linoma Beach was listed on the National Register of Historic Places. It was judged especially significant as representing a vanishing type of early twentieth century roadside architecture.



METROPOLITAN AREA PLANNING AGENCY

2222 Cuming St., Omaha, NE 68102-4328

P: 402.444.6866 F: 402.342.0949

Email: mapa@mapacog.org

MAPA is an EOE/DBE employer

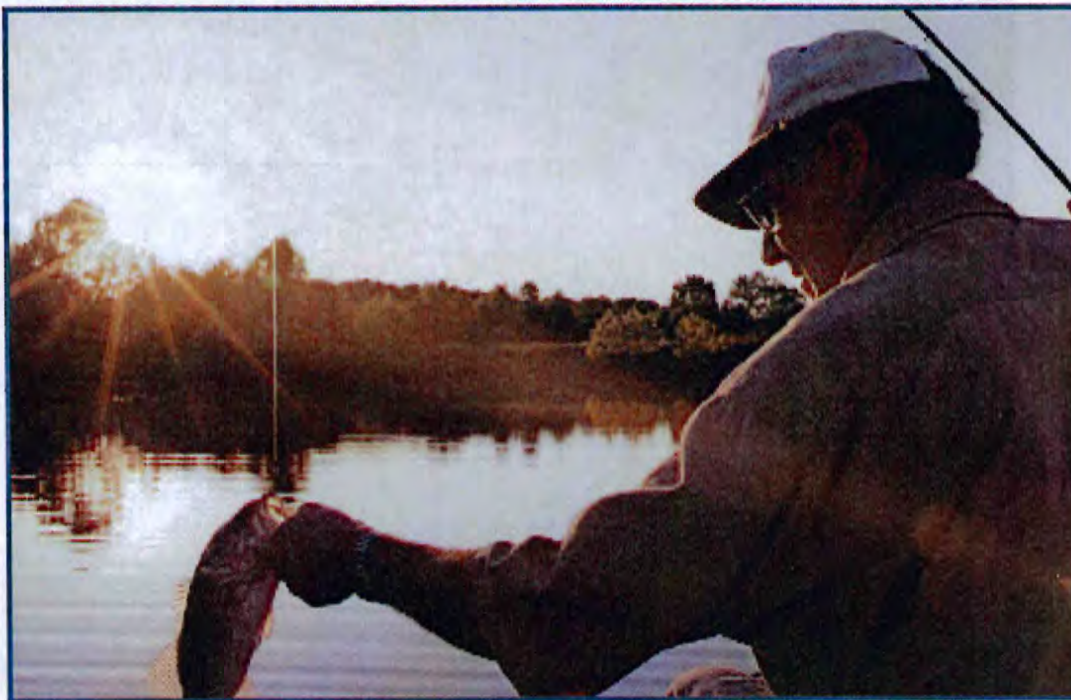
The preparation of this publication is financed through planning grants from the U.S. Dept. of Transportation through Iowa DOT and the Nebraska Dept. of Roads as provided by the Federal Highway Administration and Federal Transit Administration and through local funds from member jurisdictions. The views and opinions MAPA expressed herein do not necessarily state or reflect those of the U.S. Department of Transportation.



Dam Site 15A: *An Opportunity to Provide More than Just Flood Control*

The Papio-Missouri River Natural Resources District and the city of Omaha along with the other members of the Papillion Creek Watershed Partnership continue the planning and preliminary design process of Papillion Creek Dam Site 15A. Dam Site 15A is located on the North Branch West Papillion Creek in Douglas County near 168th and Fort Streets. A 2009 Papillion Creek Watershed Plan identified Dam Site 15A as a high priority project for implementation.

This newsletter is the third of a series of publications prepared to keep the public informed on the project.



Preliminary Design Continues to Develop

Work is nearly complete on the development of the preliminary design features of the dam and associated project elements. Major features include an earthen main dam located upstream (north) of Fort Street, a water quality basin located upstream of a proposed 180th Street alignment, improving Ida Street along its current alignment, basic public park features, creation of in-lake fishery enhancements, relocating power line poles outside the normal pool area, and the partial extension of a sanitary sewer. During preliminary design the type, size, and location of the major features have been identified and developed to fit the site conditions and to meet design criteria. The figure on the next page illustrates the major features as summarized below:

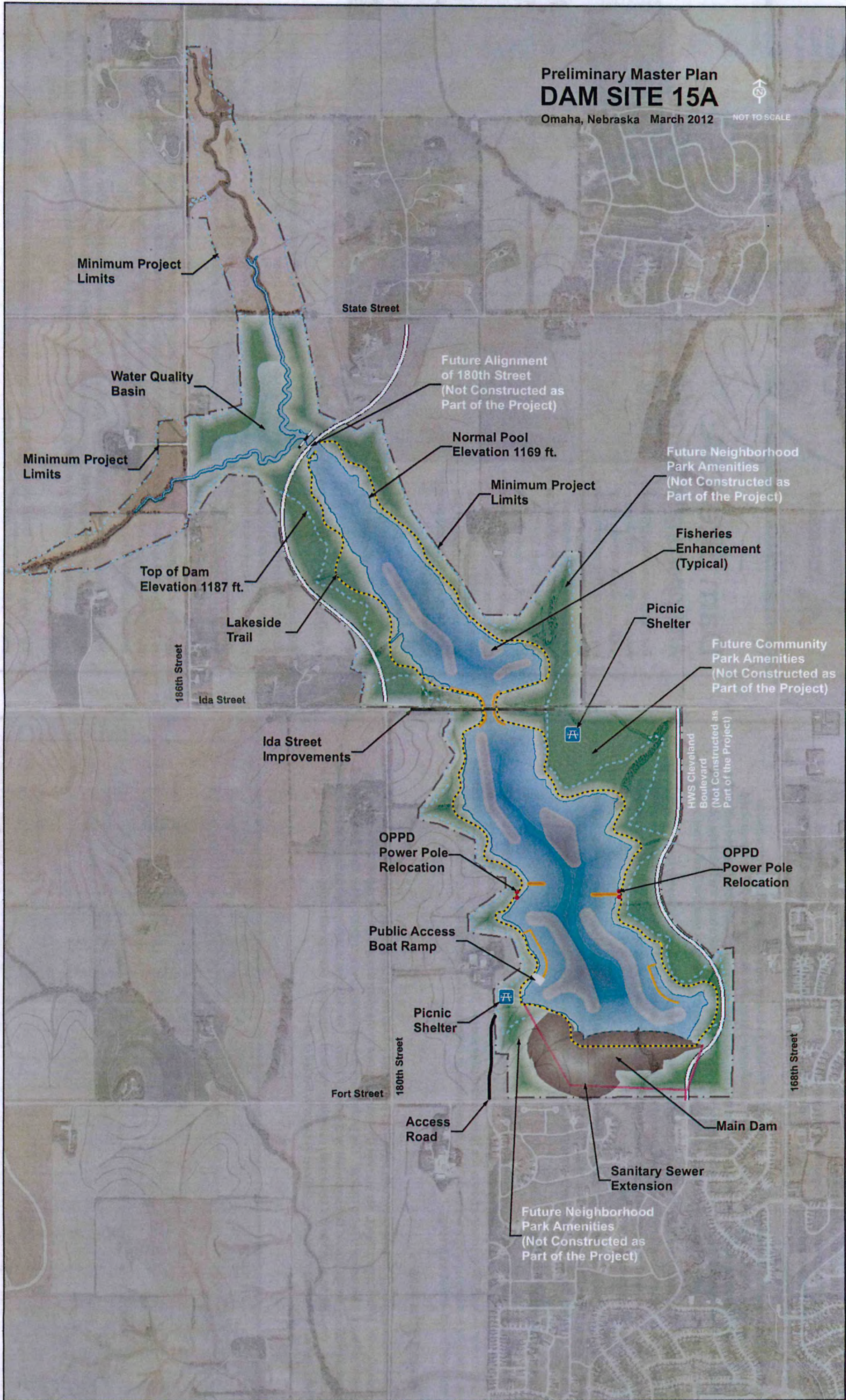
Main Dam: The main dam is an earthen embankment structure approximately 1,750 feet long, with a top width of 20 feet, elevated approximately 40 feet above the floodplain. A concrete intake structure will maintain a normal pool elevation with a concrete pipe spillway through the dam embankment to convey water downstream. A 400-foot wide auxiliary spillway is located on the west edge of the embankment.

Water Quality Basin: A water quality basin is to be located upstream of the future 180th Street alignment. Long range regional transportation plans call for an extension of 180th Street from Ida Street to State Street. The water quality basin will retain sediments and nutrients from upstream drainage runoff, improving the water quality and clarity of the main lake.

Ida Street: Ida Street bisects the project area and presented a unique design challenge. As a result of the coordinated planning studies it was determined that improvements to Ida Street will be made on its current alignment creating an upper and lower lake area. Improvements will include the construction of a new bridge to span the lake and raising the vertical profile of Ida Street above the normal lake level.

Preliminary Master Plan
DAM SITE 15A

Omaha, Nebraska March 2012 NOT TO SCALE



Park Features: The area around the proposed lake will be parkland that ultimately will be operated by the City of Omaha. As a part of the creation of a regional flood control project, basic park features will be constructed. These features include a trail around the lake, a boat ramp, picnic shelters, bathrooms, and access roads to these features. The City of Omaha will add additional neighborhood and community park amenities in the future.

In-lake Enhancements: To enhance the aquatic habitat of the lake, in-lake improvements will be constructed to provide diversity in habitat. A series of earthen berms, breakwater jetties, and shoaling areas will be constructed. Borrow areas to provide material required for the earthen dam embankments will be strategically located within the lake to enhance aquatic habitat in a cost-effective manner. It is anticipated that a grant from the Nebraska Game and Parks Commission will help to fund these improvements to create a prime fishing spot near the Omaha metro area.

OPPD Power Pole Relocation: Two OPPD transmission lines cross the proposed lake approximately one-half mile north of Fort Street. These lines will remain on their current alignment, but several of the poles will be removed from the proposed pool area and replaced with taller poles to allow the transmission lines to span the lake with the necessary vertical clearance above the normal lake pool.

Sanitary Sewer Extension: The Design team has been in coordination with the City of Omaha to consider future extensions to the sanitary sewer system. A portion of the sewer extension could be constructed at the same time as the dam to reduce future construction costs to the City of Omaha and avoid any disturbance to the dam.

Environmental Studies

A part of the planning studies and preliminary design is the submission of a U.S. Army Corps of Engineers (USACE), Section 404 permit. The 404 permit evaluates the effect of the project on the environment and is necessary for any project that includes fill or construction in the Nation's navigable waters. The permit process can take 18 to 24-months to complete as design changes are made to avoid, minimize, or mitigate environmental impacts of this flood control and lake based recreation project.

Project Schedule

It has become evident that the previously published project schedules were a bit optimistic, especially in light of the complexities of this large project. We are near the half-way point in the planning and design process. The schedule outlined in the table below is more realistic. The preliminary transportation and recreation plans have been finalized and preliminary design should be completed by the end of March. Final design is anticipated to begin in the summer of 2012. Once the final design is substantially complete, the land acquisition process will begin. Construction of the lake and basic recreation features is planned to begin in the fall of 2013.

| Preliminary Project Schedule | Fall 2010 | 2011 | Spring 2012 | Summer 2012 | Fall 2012 | Winter 2012 | Spring 2013 | Summer 2013 | Fall 2013 | Winter 2013 | 2014 |
|--|-----------|------|-------------|-------------|-----------|-------------|-------------|-------------|-----------|-------------|------|
| Planning Studies and Preliminary Design Initiation | | | | | | | | | | | |
| Final Design | | | | | | | | | | | |
| Land Acquisition Process | | | | | | | | | | | |
| Construction | | | | | | | | | | | |

Project Contacts:

Lori Laster
P-MRNRD Project Manager
(402) 444-6222
llaster@papiionrd.org

John Engel
HDR Project Manager
(402) 926-7110

Find out more information!

Visit:

www.papiionrd.org
www.papiopartnership.org

March, 2012

[illegible]

Updated: March 9, 2012

Current and On-Going Projects P-MRNRD Legal Counsel

★ = **Top Priority**

F = Future Work – No Assignment

N = New Assignment

O = Others Handling

W = Work in Progress

P = PFP's Portion Completed

- **Little Papio:** (Cleveland)
- **Big Papio:** (Cleveland)
 - ★ Gabion Repair Project Easement Consents (W)
- **West Branch:** (Cleveland)
 - Land Exchange with Sarpy Co. (96th St.) (W)
 - ★ Land Exchange with Trumble family (W)
- **Western Sarpy Dike:** (Cleveland)
 - Saunders County side ROW agreement and easements (F)
 - ★ NRDs/NE-ARNG Interlocal for Camp Ashland Property (W)
 - ★ NE-ARNG Fairview Road Access License (N)
- **Floodway Purchase Program:** (Laster)
- **Trail Projects:** (Bowen)
 - ★ MoPac Trail (Hwy 50 to Lied Bridge) BELF Settlement and New Dowd Easement (N)
- **Missouri River Corridor Project:** (Becic)
- **USDA PL 566 Projects, Silver Creek and Pigeon/Jones Watershed:** (Schumacher/Cleveland)
 - ★ Pigeon/Jones Site 15 Purchase Agreements and closing documents (W)
 - Papio W-3 Eminent Domain (Camden) (F)
 - ★ Papio W-3 Access-Quiet Title Action (W)
 - ★ Pigeon/Jones Sites 1, 9, & 23 Easements (N)

- **Papio Watershed Dam Sites:** (Grint/Laster/Petermann)
 - Interlocal agreement with Douglas County for DS 15A (W)
 - Interlocal agreement with City of Omaha for DS 15A (F)
 - ✪ Zorinsky Basin #1 – purchase agreements, deeds and easement (W)
 - ✪ 3 Purchase Agreements for additional WP5 ROW (N)
- **Papio Creek Watershed Partnership (Stormwater):** (Grint)
- **Rural Water Projects:** (Sklenar)
- **Other:**
 - ✪ MOU with UNO for Lied Platte River Bride Research Station (Henkel) (N)
 - ✪ Tetra Tech Contract modification for Missouri River Levee Accreditation (Henkel) (N)
 - ✪ UDP Cambridge Oaks/City of Omaha Addendum (Bowen) (N)

MONTHLY UPDATE

March 2012



A Partnership meeting was held on March 22, 2012 at 10am at the NRC Building. Minutes are updated regularly on the Partnership's website: www.papiopartnership.org.

CBI Software Demonstration

Jim Kee, City of Omaha, provided a demonstration of the CBI Software to the Partnership members. This software is a database with GIS interface used to keep track of the requirements of each MS4 community's permit requirements. Data and supporting documentation can be uploaded to the software which allows for all required documentation to be accessible in the event of an audit from EPA or NDEQ.

There have been some issues with the software in the past, however CBI has been more responsive and has provided a support line to Omaha which has solved many of the issues.

Runoff Control Plans – Training Session

The templates developed by the City of Omaha for runoff control plans for their municipal facilities have been distributed to all Partnership members. These are facilities that are not required to have a Stormwater Pollution Prevention Plan under NPDES regulations, but still have the potential to release pollutants in the event of a stormwater discharge from the site.

A training session will be held scheduled after April 1 at Omaha Missouri River Training Room at their Missouri River Treatment Plant.

MS4 Annual Report

The annual report to NDEQ for MS4 communities is due April 1. The report template is being developed by Omaha and P-MRNRD and will be sent to Partnership members as soon as it is complete.

Other Items of Interest

- The Partnership will be submitting a letter of support for the City of Omaha's application to EPA's Green Infrastructure Program. This program will help provide planning assistance to entities that are attempting to incorporate more green infrastructure in their long term control plans.
- The Nebraska Floodplain and Stormwater Managers Association will hold their first 2012 meeting on April 19, 2012 at Embassy Suites in La Vista. Marty Grate will be presenting on the 2011 Missouri River Flooding and Amanda Grint will be presenting on Municipalities' Role in Floodplain Management. There will also be speakers from NDEQ, FEMA and NDNR.
- Marlin Petermann noted that he attended a presentation by Annie Folck, Stormwater Coordinator for the City of Scottsbluff. Scottsbluff has instituted a stormwater charge of \$0.50 for all local water users in order to generate funds for their stormwater program. This fee generates approximately \$30,000 per year for the City.

Next Meeting:

The next Partnership meeting will be April 26, 2012 at 10 am at the NRC building.



Omaha, NRD to study new standards for levee design

■ **FEMA certification will keep businesses and homeowners from having to buy flood insurance.**

BY NANCY GAARDER

WORLD-HERALD STAFF WRITER

Metro-area levees and flood defenses — battle-tested by last summer's flooding— are on their way to being built to even tougher standards.

On Friday, Omaha officials announced that the Papio-Missouri River Natural Resources District will pick up half the cost of a \$4 million study that incorporates the latest science into the decades-old design of the levees. The city will pay the rest.

The study is required to meet new certification standards set by the Federal Emergency Management Agency in the wake of Hurricane Katrina.

The improvements aren't just for peace of mind, officials said in announcing the partnership. FEMA certification of the levees is necessary for eastern Omaha businesses and homeowners to avoid having to buy flood insurance or face other hurdles when seeking financing.

"The threat of flooding... places our resources and our economy at risk," said Mayor Jim Suttle. "Omaha is a community on the move. ... We cannot afford to risk this success."

Papio-Missouri NRD General Manager John Winkler said last summer's flood along the Missouri River underscored the importance of such partnerships.

The study could take a couple of years. Engineers will probe the levee, analyze its surroundings and update the metro area's flood threat. The certification requires that the city be able to keep areas behind the levee from flooding.

All federal levees must meet this new certification, Winkler said. In Sarpy County, where the levees are entirely the NRD's responsibility, the NRD will foot the full bill of the study planned there, he said.

Once the study is completed, Omaha will know how much it will cost to bring the levees up to newer standards. Currently, the Army Corps of Engineers is spending \$15 million to restore Omaha's levees to pre-flood condition.

Public Works employee Gordon Andersen said Omaha's levees are in good shape after what they've been through.

"Actually, in pretty good shape," he said Friday.

Wanahoo debut delayed till April 28

By Kevin Cole

WORLD-HERALD STAFF WRITER

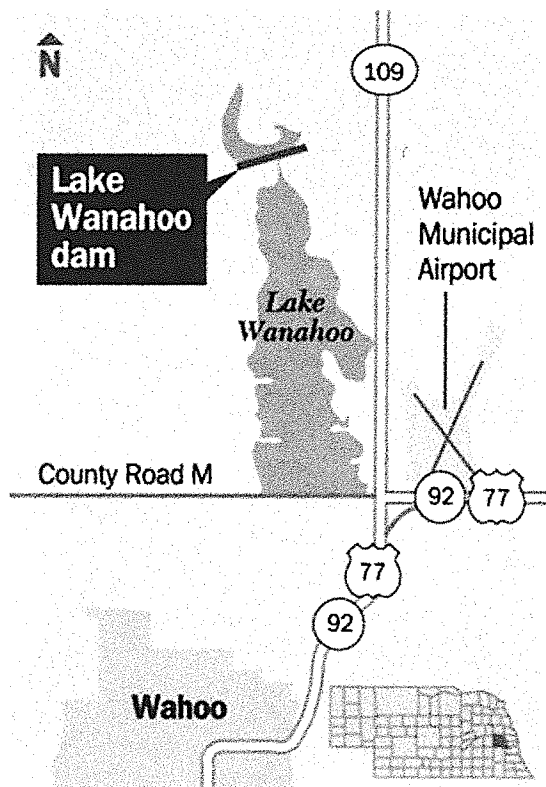
A 637-acre lake and recreation area in Saunders County will open four weeks later than originally projected.

Lake Wanahoo, north of Wahoo, will open April 28 instead of April 1. Rex Amack, director of the Nebraska Game and Parks Commission, made the announcement Friday — a day after the Lower Platte North Natural Resources District, which built the lake, approved an agreement by a vote of 11-8.

The agreement allowing the commission to operate the recreation area was stalled at the board's February meeting when the NRD said it needed to straighten out financing issues with its partners, the City of Wahoo and Saunders County.

NRD General Manager John Miyoshi said a committee made up of three elected officials from the district city and county will meet this month to discuss the financing issue.

The Lake Wanahoo recreation area will have day-use areas, 60 full-service RV pads, tent camping, hunting by youths, recreational trails and no-wake boating. The \$12.7 million dam that created the lake is part of a \$30.5 million project in the 87-square-mile Sand Creek Watershed.



THE WORLD-HERALD

Amack said the lake has been stocked and will be "spectacular" for fishing.

"It's going to be terrific with no-wake boating that will really help the water quality," Amack said. "The lake was built from the ground up with a lot fish habitat."

Amack said fisheries personnel from Game and Parks have netted 30-inch-long northern pike and noted abundant numbers of bass, crappie and bluegill.

"I think it would be a black eye to the NRD if we didn't open it up," NRD member Dave Saalfeld said.

Ron Sabatka of the NRD said the agency still needs to work with the city and county as to the financial responsibility for the land purchase loan interest. But, he said, the district should not combine that with the agreement on the table from the commission.

"The taxpayers don't look at it that way," he added. "They want to get out and fish."

At the NRD meeting, Jim Swenson, manager of Game and Parks' eastern parks, told the directors that if the park is to open in April, the hiring of staff and the purchasing of equipment needed to begin right away.

"We are standing at the starting line, waiting," Swenson said. "I can't order anything until that agreement has been inked."

From: Kayla Welch [<mailto:kayla.welch@hotmail.com>]
Sent: Monday, April 09, 2012 1:23 PM
To: Schumacher, Terry
Subject: RE:

Terry,

My family is prepared to offer \$500.00 for the trailer and move it at our own expense. Please let me know if the board is willing to accept this as it is the only offer we have. Thank you.

Kayla

From: tschumacher@papionrd.org
To: kayla.welch@hotmail.com
Subject: RE:
Date: Fri, 6 Apr 2012 18:27:50 +0000

Kayla,

NRD Management has decided not to advertise in the paper. The NRD would however entertain an offer on the trailer. Any offer would be subject to Board approval.

Let me know if you are still interested.

Terry

From: Kayla Welch [<mailto:kayla.welch@hotmail.com>]
Sent: Tuesday, April 03, 2012 3:42 PM
To: Schumacher, Terry
Subject:

Hello Terry,
Is there any news on the trailer? Do you know what paper it will be posted in and when yet?