

Agenda Item: 6.

**To:** Programs, Projects and Operations Subcommittee

**From:** Jim Becic

**Date:** 30 April, 2012

**Re:** Summit Lake Cost-Share Commitment between the Papio-Missouri River NRD and the Nebraska Game and Parks Commission.

---

The Papio-Missouri River NRD (District) and the Nebraska Game and Parks Commission (Commission), is at the end (16 May, 2012) of the third year of a 25 year lease agreement designating the Commission the authority to operate the District owned, Summit Lake State Recreation Area in Burt County, Nebraska. The Agreement stipulates that the NRD contribute \$30,000/year for four years beginning July, 2009 to the Commission for operation and maintenance needs. A final payment for this Agreement is due in July, 2012 (FY- 2013).

While significant site improvements have been made by the Commission over the years – lake renovation, improved boat ramp/dock, better site access, etc., a major improvement – that of electrifying a campground - has yet to be realized. A cost estimate of \$96,000.00 has been developed by the Commission to complete the thirty electrical sites planned for the area (attached) and they have identified several potential funding sources with the intent of beginning construction this summer. Some in-kind work such as site preparation and volunteer labor is anticipated to offset a portion of this cost, but the majority will need to be raised as cash.

The Commission has obligated \$20,000 in their FY-2013 Capital budget as a match for the project and challenged various Burt County groups and individuals to provide an additional \$20,000 towards this effort. This cost share funding request to the District, is to provide a \$20,000.00 match to the current \$59,339.08, bringing the total cash and in-kind contributions up to \$79,339.08.

If the District agrees to provide the \$20,000.00 match contribution and provide a subsequent confirmation letter, the Commission will then be able to apply to the Land and Water conservation Fund for the difference in cost to complete the project.

**Therefore, it is management's recommendation that the Programs, Projects and Operations Subcommittee recommend to the Board, that the District contribute twenty thousand dollars (\$20,000.00) in fiscal year 2013, to the Nebraska Game and Parks Commission as a cost-share contribution to assist with construction of the thirty electrical campground locations at the Summit Lake State Recreation Area, in Burt County, Nebraska.**

\*\*\*\*\*





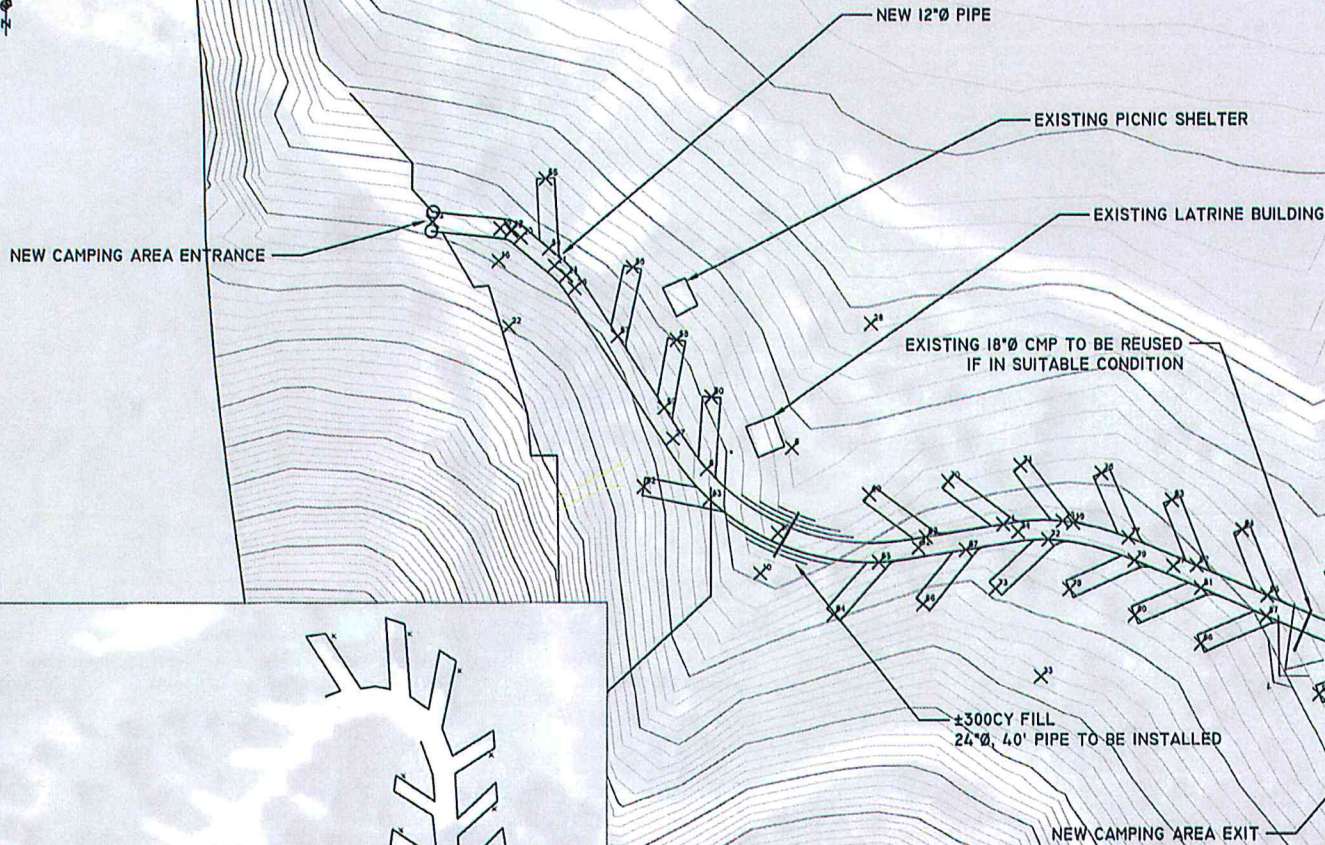
© 2012 Google  
Image USDA Farm Service Agency

Google earth





-NEW CAMPER PAD LOCATIONS HAVE BEEN STAKED  
-LOCATIONS SHOWN SUBJECT TO FIELD ADJUSTMENTS  
-EXISTING CONTOURS SHOWN ARE APPROXIMATE



II PROPOSED EXISTING CAMPER PADS TO BE ELECTRIFIED

**SITE PLAN**  
19 PROPOSED NEW ELECTRIFIED CAMPER PADS  
SCALE: 1" = 100 FEET

PL. #	Easting	Northing	Longitude	Latitude
6	2650315.6215	723500.0662	109°06' 17.45.89"	N41° 45' 38.11"
7	2650316.0841	723501.5189	109°06' 17.45.75"	N41° 45' 38.56"
8	2650317.2312	723503.9301	109°06' 17.45.70"	N41° 45' 39.10"
9	2650318.5489	723517.0935	109°06' 17.46.29"	N41° 45' 39.10"
10	2650319.4617	723528.9399	109°06' 17.48.29"	N41° 45' 39.61"
11	2650320.8113	723533.1499	109°06' 17.48.87"	N41° 45' 40.01"
12	2650321.6162	723539.9051	109°06' 17.49.76"	N41° 45' 40.10"
13	2650322.1079	723543.1393	109°06' 17.49.99"	N41° 45' 40.02"
14	2650323.8649	723547.1826	109°06' 17.49.01"	N41° 45' 39.76"
15	2650324.3339	723551.9546	109°06' 17.48.07"	N41° 45' 40.00"
16	2650325.8792	723558.9337	109°06' 17.47.83"	N41° 45' 39.79"
17	2650326.9018	723566.8619	109°06' 17.46.77"	N41° 45' 39.94"
18	2650327.6124	723573.1867	109°06' 17.45.41"	N41° 45' 39.70"
19	2650328.8499	723578.6292	109°06' 17.44.94"	N41° 45' 39.21"
20	2650329.9137	723584.4398	109°06' 17.44.32"	N41° 45' 39.61"
21	2650330.4822	723591.1871	109°06' 17.43.70"	N41° 45' 39.50"
22	2650331.4417	723598.8815	109°06' 17.43.19"	N41° 45' 39.23"
23	2650332.9371	723606.1412	109°06' 17.42.96"	N41° 45' 39.10"
24	2650333.3131	723613.3788	109°06' 17.42.08"	N41° 45' 37.42"
25	2650334.4819	723621.8231	109°06' 17.41.54"	N41° 45' 37.25"
26	2650335.3796	723630.7977	109°06' 17.41.38"	N41° 45' 36.14"
27	2650336.2251	723640.8842	109°06' 17.41.43"	N41° 45' 37.34"
28	2650337.4935	723651.9532	109°06' 17.41.73"	N41° 45' 37.00"
29	2650338.8877	723663.5754	109°06' 17.42.47"	N41° 45' 39.84"
30	2650340.3025	723675.2674	109°06' 17.43.49"	N41° 45' 40.41"
31	2650341.3644	723687.0209	109°06' 17.43.56"	N41° 45' 39.66"
32	2650342.1084	723698.3486	109°06' 17.43.75"	N41° 45' 39.09"
33	2650343.1385	723710.1588	109°06' 17.43.11"	N41° 45' 39.04"
34	2650344.0604	723722.8043	109°06' 17.42.27"	N41° 45' 38.49"
35	2650345.5519	723735.3042	109°06' 17.41.77"	N41° 45' 38.56"
36	2650346.8882	723748.4291	109°06' 17.41.83"	N41° 45' 37.97"
37	2650348.3543	723761.1727	109°06' 17.41.53"	N41° 45' 37.85"
38	2650349.9653	723774.4160	109°06' 17.41.87"	N41° 45' 37.72"
39	2650351.7487	723787.2140	109°06' 17.41.50"	N41° 45' 36.71"
40	2650353.5072	723800.1758	109°06' 17.41.98"	N41° 45' 37.14"
41	2650355.3623	723813.2045	109°06' 17.42.51"	N41° 45' 36.78"
42	2650357.9449	723826.0531	109°06' 17.43.07"	N41° 45' 37.21"
43	2650361.5122	723839.9241	109°06' 17.43.45"	N41° 45' 37.31"
44	2650365.3102	723853.8152	109°06' 17.44.19"	N41° 45' 37.70"
45	2650369.8684	723867.7263	109°06' 17.44.19"	N41° 45' 37.78"
46	2650374.8951	723881.6574	109°06' 17.43.60"	N41° 45' 37.41"
47	2650379.2359	723895.6085	109°06' 17.43.11"	N41° 45' 37.27"
48	2650393.5855	723909.5796	109°06' 17.42.74"	N41° 45' 36.68"
49	2650408.1302	723923.5707	109°06' 17.42.38"	N41° 45' 37.64"
50	2650423.3307	723937.5818	109°06' 17.42.94"	N41° 45' 37.41"
51	2650438.5618	723951.6129	109°06' 17.43.50"	N41° 45' 37.79"
52	2650453.1771	723965.6640	109°06' 17.44.23"	N41° 45' 37.75"
53	2650468.9272	723979.7351	109°06' 17.45.00"	N41° 45' 36.43"
54	2650484.0114	723993.8262	109°06' 17.45.18"	N41° 45' 37.00"
55	2650499.3387	724007.9373	109°06' 17.45.20"	N41° 45' 36.61"
56	2650504.7071	724022.0684	109°06' 17.45.40"	N41° 45' 36.81"
57	2650510.1014	724036.2195	109°06' 17.45.50"	N41° 45' 36.99"
58	2650515.2789	724050.3906	109°06' 17.46.14"	N41° 45' 37.44"
59	2650518.1735	724064.5817	109°06' 17.46.26"	N41° 45' 36.72"
60	2650523.0831	724078.7928	109°06' 17.46.26"	N41° 45' 36.35"
61	2650527.9184	724093.0239	109°06' 17.46.26"	N41° 45' 36.33"
62	2650532.7887	724107.2750	109°06' 17.46.26"	N41° 45' 36.33"
63	2650537.6931	724121.5461	109°06' 17.46.26"	N41° 45' 36.33"
64	2650542.6324	724135.8272	109°06' 17.46.26"	N41° 45' 36.33"
65	2650547.6067	724150.1183	109°06' 17.46.26"	N41° 45' 36.33"
66	2650552.6160	724164.4194	109°06' 17.46.26"	N41° 45' 36.33"
67	2650557.6603	724178.7305	109°06' 17.46.26"	N41° 45' 36.33"
68	2650562.7396	724193.0516	109°06' 17.46.26"	N41° 45' 36.33"
69	2650567.8539	724207.3827	109°06' 17.46.26"	N41° 45' 36.33"
70	2650572.9932	724221.7238	109°06' 17.46.26"	N41° 45' 36.33"
71	2650578.1575	724236.0749	109°06' 17.46.26"	N41° 45' 36.33"
72	2650583.3468	724250.4360	109°06' 17.46.26"	N41° 45' 36.33"
73	2650588.5611	724264.8071	109°06' 17.46.26"	N41° 45' 36.33"
74	2650593.8004	724279.1882	109°06' 17.46.26"	N41° 45' 36.33"
75	2650598.0647	724293.5793	109°06' 17.46.26"	N41° 45' 36.33"
76	2650603.3540	724307.9804	109°06' 17.46.26"	N41° 45' 36.33"
77	2650608.6683	724322.3915	109°06' 17.46.26"	N41° 45' 36.33"
78	2650613.9976	724336.8126	109°06' 17.46.26"	N41° 45' 36.33"
79	2650619.3429	724351.2437	109°06' 17.46.26"	N41° 45' 36.33"
80	2650624.7042	724365.6848	109°06' 17.46.26"	N41° 45' 36.33"
81	2650629.0815	724380.1359	109°06' 17.46.26"	N41° 45' 36.33"
82	2650634.4748	724394.5970	109°06' 17.46.26"	N41° 45' 36.33"
83	2650639.8841	724409.0681	109°06' 17.46.26"	N41° 45' 36.33"
84	2650644.9014	724423.5492	109°06' 17.46.26"	N41° 45' 36.33"
85	2650649.9387	724438.0303	109°06' 17.46.26"	N41° 45' 36.33"
86	2650654.9960	724452.5114	109°06' 17.46.26"	N41° 45' 36.33"
87	2650660.0633	724467.0025	109°06' 17.46.26"	N41° 45' 36.33"
88	2650665.1406	724481.5036	109°06' 17.46.26"	N41° 45' 36.33"
89	2650670.2279	724496.0147	109°06' 17.46.26"	N41° 45' 36.33"
90	2650675.3252	724510.5358	109°06' 17.46.26"	N41° 45' 36.33"
91	2650680.4325	724525.0569	109°06' 17.46.26"	N41° 45' 36.33"

NEBRASKA GAME AND PARKS COMMISSION

ENGINEERING DIVISION

PROJECT NUMBER

1

PROJECT CAMPER PADS

LOCATION SUMMIT LAKE SRA

DRAWING CONTENTS LAYOUT, SITE PLAN

DESIGNED BY MERVIN  
DATE APR 12

DRAWING SIZE 11 X 17

FILE NAME: W:\Engineering\NewFiles\Summit Lake SRA\12-044 Campground Electrical\eland.dwg



**Summit Lake SRA - Electrical Hook-up Project**

Partnership of Nebraska Game and Parks Commission - Papio Missouri River Natural Resources District - Burt County Recreational Preservation Association

Funding Sources and Amounts April 25, 2012

Projected Need = \$96,000

Estimated Budget Need: \$ 96,000.00

***Within Scope of Project***

Cash Contribution	Amount	Source
Nebraska Game and Parks Commission	20,000	Capital Budget - NORDA
Burt County	10,000	Tek Comm Fndt Grant
Burt County	7,300	Misc Donations/Pledges

Total Cash Available: \$ 37,300.00

Materials or Services	Est. Value	Source
Credit for primary cable \$22,628.42 - \$7,500 = \$15,128.42	7,500	Burt County Pub Power
Preliminary grading and site prep, staking, etc. (will be determined once elevations are set)	???	Nebr Game & Parks

Total Material Value: \$ 7,500.00

In-Kind	Defined	Source	Estimated Value
Finish grading of campground and pads	Labor/Equip	Dave Wakehouse	9,000
Trenching and backhoe for primary cable	Labor/Equip	Tekamah Pump Shop	2,676
Laying of primary cable	Labor	Community Volunteers	1,663.08

Total In-Kind Value: \$ 13,339.08

**Total to Date: \$ 58,139.08*****Outside Scope of Project***

Four light poles	1,200	Don Bromm
Tekamah Plaindealer	150	Advertising
Bill & Lisa Skinner	?	DJ for May 5 Fundraiser

**Remaining Need  
Based on Estimate: \$ 37,860.92**

# SUMMIT LAKE SRA

