

**Agenda Item 7a:**

## **Memorandum**

**To:** Programs, Projects and Operations Subcommittee  
**From:** Brian L. Henkel, Groundwater Management Engineer  
**Date:** August 03, 2012  
**Re:** Review and Recommendation on Economic Development Administration Disaster Relief Grant Application:

---

The June issue of the MAPA newsletter included an article about the US Department of Commerce – Economic Development Administration (EDA) being appropriated \$200 million in supplemental disaster funding due to the disaster events of 2011 (see Attachment 1). The allocation is divided among the six planning regions with the Denver Region receiving \$51.8 million. Eligible projects include restoration of infrastructure that allows for economic resiliency. District management and staff have been discussing a grant application with MAPA and are proposing making a grant application for the re-certification of the Missouri River R-613 and R-616 Levee System Units (Levees). The grant will be written by MAPA with the assistance of District staff and FYRA Engineering. The application, as currently envisioned, will be for the total construction costs of \$20 million for certification of the Levees.

The District management has also been in discussion with Sarpy County and the City of Bellevue, Nebraska to receive resolutions of support for the grant application. Also attached is a summary of the EDA grant and notes specific to the District grant application (Attachment 2 and 3).

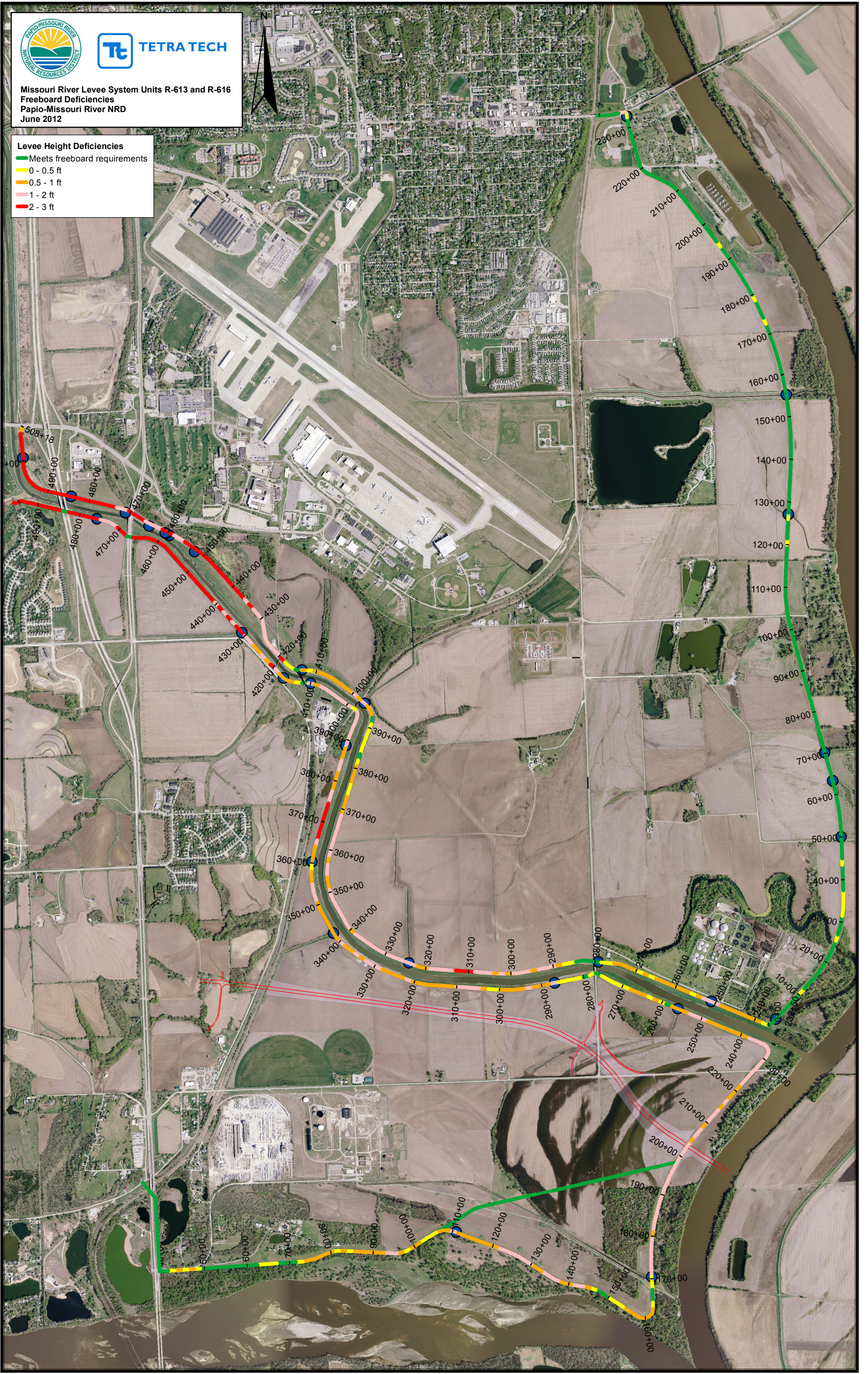
**Management recommends that the Programs, Projects and Operations Subcommittee recommend to the Board of Directors that the District apply for an Economic Development Administration grant for disaster relief funds to offset the costs of certification of the R-613 and R-616 levees.**



Missouri River Levee System Units R-613 and R-616  
Freeboard Deficiencies  
Papio-Missouri River NRD  
June 2012

Levee Height Deficiencies

- Meets freeboard requirements
- 0 - 0.5 ft
- 0.5 - 1 ft
- 1 - 2 ft
- 2 - 3 ft



## EDA Disaster FFO for Federal Supplemental Funding Released

200 million in supplemental disaster funding has been appropriated to the US Department of Commerce- Economic Development Administration (EDA) to assist with projects that will aid in long-term economic recovery from the disaster events of 2011. The allocation is split among EDA's six planning regions based on impacts and vulnerability. The Denver Region (which included Nebraska and Iowa) received the largest cut of funding at \$51.8 million. Applications will be accepted on an open cycle through [grants.gov](http://grants.gov). The EDA investment rate is listed at 80% of eligible project costs.

Eligible activities include strategic planning, restoration of infrastructure, and provision of funds for long-term recovery that allow for integration of economic resiliency principles into a region's collaborative economic development efforts. Most likely in our region, competitive applications will be for planning and/or infrastructure projects directly related to increasing economic resiliency through allowing us to absorb the shock of future disasters and incidents such as those for which we were declared.

MAPA is currently working on applications for the City of Council Bluffs, Pottawattamie County, and Mills County. The Council Bluffs project will focus on constructing a new pump station to prevent localized flooding at the intersection of Veteran Memorial Highway/ US 275 and Indian Creek. Pottawattamie County has decided to conduct a feasibility plan to repair the levees north of Council Bluffs to the Harrison County line and to form levee districts that would be charged with permanent maintenance of the structures. Mills County is considering pursuit of accreditation of existing levees, providing assurances of flood protection to the current businesses and residences as well as prospective development opportunities.

Please note that EDA infrastructure projects should be related directly to the 2011 flooding and be projects that propose viable long-term recovery/resiliency solutions. In addition, since these are federal funds, all federal guidelines would apply including environmental review, labor standards, and procurement of design/construction professionals.

If you are interested in applying for these funds, please contact Clint Sloss, [csloss@mapacog.org](mailto:csloss@mapacog.org) or (402) 444-6866 ext 225.

## **Attachment 2 to Agenda Item 7a:**

### **Overview: EDA Disaster Relief Funding**

\$200 million in supplemental disaster funding has been appropriated to the US Department of Commerce- Economic Development Administration (EDA) to assist with projects that will aid in long-term economic recovery from the disaster events of 2011. The allocation is split among EDA's six planning regions based on impacts and vulnerability. The Denver Region (which included Nebraska and Iowa) received the largest cut of funding at \$51.8 million. Applications will be accepted on an open cycle through grants.gov. The EDA investment rate is listed at 80% of eligible project costs (i.e. 80% federal match; 20% local match).

Eligible activities include strategic planning, restoration of infrastructure, and provision of funds for long-term recovery that allow for integration of economic resiliency principles into a region's collaborative economic development efforts. Most likely in our region, competitive applications will be for planning and/or infrastructure projects directly related to increasing economic resiliency through allowing us to absorb the shock of future disasters and incidents such as those for which we were declared.

### **Open Applications:**

**Council Bluffs-** seeking funds to construct a new pump station to prevent localized flooding at the intersection of Veteran Memorial Highway/ US 275 and Indian Creek. - \$9.1 million

**Pottawattamie County-** seeking funds to conduct feasibility plan to repair the levees north of Council Bluffs to the Harrison County line and to form levee districts that would be charged with permanent maintenance of the structures. - \$1.15 million

**Mills County-** seeking funds to conduct accreditation study of existing levees, providing assurances of flood protection to the current businesses and residences as well as prospective development opportunities. - \$1.55 million

NOTE: EDA infrastructure projects should be related directly to the 2011 flooding and be projects that propose viable long-term recovery/resiliency solutions. In addition, since these are federal funds, all federal guidelines would apply including environmental review, labor standards, and procurement of design/construction professionals.

### **Attachment 3 to Agenda Item 7a:**

Papio NRD-Sarpy County  
EDA Disaster Relief Grant Application  
Wednesday, July 11, 2012

**EDA Project:** Missouri River Levee System Units R-613 & R-616 Freeboard Deficiencies

#### **Contacts**

- Brian Henkel, Groundwater Management Engineer
- Marlin Petermann, Asst. General Manager; Papio NRD
- Chris Shewchuk, Planning Director with the City of Bellevue
- Mike Sotak, Fyra Engineering
- People to include: **Mark Wayne**, Sarpy County Administrator; **Toby Churchill**, Sarpy County EDC; and **Bruce Fountain**, Sarpy County Planning and Building Director

#### **Application Questions**

- Lead Applicant- Papio-Missouri NRD
  - o Partner with Sarpy County and City of Bellevue
  - o Appoint "Organizational Unit"- Papio representative
  - o Appoint Authorized Rep (Elected Official)
  - o MAPA- administer grant, if awarded (funds included in grant)
- Budget Information- See Form 424C
  - o Breakdown of project costs
  - o Estimated \$20-25 million
- Define project area of focus
- Background of project
- \*Economic Impact of 2011 floods- business displacement, infrastructure closures
  - o Focus on businesses; not residential or agriculture unless primary to industrial business
- \*Economic gains as a result- what do they hope to achieve in ED terms
  - o General market analysis for area
- Estimated timeline/milestones of Project
  - o In month increments; start with month "0"
- Capability of applicant to attract economic development
  - o Stats from Sarpy County EDC, Bellevue Chamber of Commerce, etc.
- \*Funding options
  - o Amount from EDA Request- 80/20 match available
  - o Secured funds/grant applications
    - Nebraska Environmental Trust grant- to be submitted Sept 2012
- List of Beneficiaries- current businesses adjacent to levees
  - o Letters of commitment/support- private business and government entities

- Engineering Report
  - o See Council Bluffs Pump Station as example (titled *Engineering Report*)
- Easements- need to widen levees
- Permits needed- Local, State and Federal
  - o Status of 408 Permit (US ACE)
- Environmental Narrative- environmental review work up to this point in time
  - o Info from 408 Permit will be used to complete
  - o See Council Bluffs Pump Station example (titled *Environmental Narrative*)

### ***Highlights from Meeting Discussion***

- Papio-Missouri NRD to be lead applicant; co-applicant with Sarpy County and City of Bellevue
  - o NRD to provide matching funds
    - Potential for NET grant to fulfill most/all of 20% match
  - o No match resolution will needed from co-applicants
    - Suggest resolution of support from Bellevue and County
- Papio-Missouri NRD owns levees
  - o Removes issue of private ownership and grant eligibility
- Offutt Airforce Base impacted by levee system- large employer; national security
- If levees not recertified, they revert to 100-year floodplain
  - o Create issues for development;
  - o May hinder US Highway 34 development opportunities
- BNSF Rail line-potential to provide rail access to north development site
  - o Project outcome: reduce risk of rail closure/delays (i.e. economic loss)
- Potential to separate/phase construction of levee repairs
  - o To prevent project slowdown due to receiving minimal funds
  - o To be discussed after hearing back from EDA rep
    - No response on phasing at this time
- Sarpy County completed application for NDED *Site & Building Development Fund*
  - o Demonstrates potential for ED investment to attract businesses
    - EDA looks for investment like this when scoring application