

Agenda Item: 8.

## MEMORANDUM

TO: Programs, Projects and Operations Subcommittee

FROM: Martin P. Cleveland, Construction Engineer

SUBJECT: Missouri River Levee R-613 and R-616 Sediment Removal Project Bid

DATE: February 24, 2012

---

On February 23, 2012, bids were opened for the referenced project. Enclosed is a project location map. This project consists of excavating and disposing of approximately 12,000 cubic yards of flood deposited sediment on 6,500 linear feet of R-613 levee berms and 9,700 cubic yards of stockpiled drainage ditch sediment at 5 locations along the Missouri River. The stockpiled sediment was removed during R-613 and R-616 Levee drainage structure outlet ditch cleanout. Bids were requested for disposal of sediment at Sarpy County Landfill or a Construction and Demolition Debris Landfill, as directed by FEMA in order to obtain 75% federal cost share.

Enclosed is a bid summary for the Sediment Removal Project. The apparent low bidder is Navarro Enterprises Construction with a total bid of \$226,570 for disposal at Hawkins Construction Company's Construction and Demolition Debris Landfill near 60<sup>th</sup> and "Q" Street in Omaha, NE. The Engineer's opinion of cost is \$311,800 for disposal at a Construction and Demolition Debris Landfill. There were 7 bids ranging from \$226,570 to \$796,268.

This work will be funded via funds included in Project Maintenance Channel-Missouri River Flood (Account 0103591 – 4450). As of January 31, 2012 remaining funds in this account was \$1,081,813. It is anticipated that this project will be completed in Fiscal Year 2012.

**It is Management's recommendation that the Subcommittee recommend to the Board of Directors that the General Manager be authorized to execute a contract for Missouri River Levee R-613 and R-616 Sediment Removal Project with Navarro Enterprise Construction, for their total base bid of \$226,570 with disposal of sediment at a Construction and Demolition Debris Landfill.**

Bid Summary – Missouri River Levee R-613 and R-616 Sediment Removal Project

Opening Date: February 23, 2012 at 10:00 a.m.

BASE BID	1. Navarro Enterprises Construction				2. E W Wells Group			
	Sарy County Landfill Disposal Site		Cons. & Demo. Waste Landfill Disposal Site		Sарy County Landfill Disposal Site		Cons. & Demo. Waste Landfill Disposal Site	
	Unit	Quantity	Unit Cost	Total Cost	Unit Cost	Total Cost	Unit Cost	Total Cost
A. Mobilization & Demobilization	LS	1	\$	\$	\$13,800	\$13,800	\$12,500	\$
B. Remove ditch sediment at Sta 171+53R	LS	1	\$	\$	\$7,966	\$7,966	\$17,259	\$
C. Remove ditch sediment at Sta 3+10R	LS	1	\$	\$	\$36,239	\$36,239	\$45,634	\$
D. Remove ditch sediment at Sta 50+82R	LS	1	\$	\$	\$6,608	\$6,608	\$14,634	\$
E. Remove ditch sediment at Sta 64+00R	LS	1	\$	\$	\$7,966	\$7,966	\$17,259	\$
F. Remove ditch sediment at Sta 70+95R	LS	1	\$	\$	\$13,636	\$13,636	\$22,594	\$
G. Remove trail sediment at Sta 275+00 to 288+00L	CY	2200	\$	\$	\$8	\$17,600	\$10	\$
H. Remove trail sediment at Sta 385+00 to 425+00L	CY	6700	\$	\$	\$8	\$53,600	\$10	\$
I. Remove trail sediment at Sta 458+00 to 473+00L	CY	3100	\$	\$	\$8	\$24,800	\$10	\$
J. Seeding	AC	9	\$	\$	\$1,595	\$14,355	\$2,005	\$
K. Soil Erosion and Erosion Control	LS	1	\$	\$	\$30,000	\$30,000	\$17,500	\$
<b>GRAND TOTAL (A through K)</b>				No Bid		\$226,570		No Bid
Proposed C/D Landfill Name/Location						Hawkins		

BASE BID	3. M E Collins Contracting				4. TAB Construction				
	Sarpy County Landfill Disposal Site		Cons. & Demo. Waste Landfill Disposal Site		Sarpy County Landfill Disposal Site		Cons. & Demo. Waste Landfill Disposal Site		
	Unit	Quantity	Unit Cost	Total Cost	Unit Cost	Total Cost	Unit Cost	Total Cost	
A. Mobilization & Demobilization	LS	1	\$	\$	\$30,000	\$	\$	\$17,174	\$17,174
B. Remove ditch sediment at Sta 171+53R	LS	1	\$	\$	\$17,590	\$	\$	\$18,774	\$18,774
C. Remove ditch sediment at Sta 3+10R	LS	1	\$	\$	\$57,700	\$	\$	\$65,174	\$65,174
D. Remove ditch sediment at Sta 50+82R	LS	1	\$	\$	\$10,180	\$	\$	\$15,744	\$15,744
E. Remove ditch sediment at Sta 64+00R	LS	1	\$	\$	\$12,270	\$	\$	\$18,764	\$18,764
F. Remove ditch sediment at Sta 70+95R	LS	1	\$	\$	\$21,200	\$	\$	\$28,374	\$28,374
G. Remove trail sediment at Sta 275+00 to 288+00L	CY	2200	\$	\$	\$10.80	\$	\$	\$14.85	\$32,670
H. Remove trail sediment at Sta 385+00 to 425+00L	CY	6700	\$	\$	\$11.50	\$	\$	\$14.70	\$98,490
I. Remove trail sediment at Sta 458+00 to 473+00L	CY	3100	\$	\$	\$10.80	\$	\$	\$15.25	\$47,275
J. Seeding	AC	9	\$	\$	\$1,500	\$	\$	\$1,274	\$1,466
K. Soil Erosion and Erosion Control	LS	1	\$	\$	\$2,000	\$	\$	\$14,644	\$14,644
<b>GRAND TOTAL (A through K)</b>				No Bid	\$298,730		No Bid		\$368,549
Proposed C/D Landfill Name/Location					Hawkins				Hawkins

BASE BID	5. Anderson Excavating				6. Valley Corporation				
	Sarpy County Landfill Disposal Site		Cons. & Demo. Waste Landfill Disposal Site		Sarpy County Landfill Disposal Site		Cons. & Demo. Waste Landfill Disposal Site		
	Item No. and Description	Unit	Quantity	Unit Cost	Total Cost	Unit Cost	Total Cost	Unit Cost	Total Cost
A. Mobilization & Demobilization	LS	1	\$25,000	\$25,000	\$20,500	\$20,500	\$3,835.53	\$3,835.53	\$3,910.64
B. Remove ditch sediment at Sta 171+53R	LS	1	\$24,510	\$24,510	\$18,810	\$18,810	\$29,909.08	\$29,909.08	\$23,451.62
C. Remove ditch sediment at Sta 3+10R	LS	1	\$78,750	\$78,750	\$56,250	\$56,250	\$118,062.20	\$118,062.20	\$92,572.20
D. Remove ditch sediment at Sta 50+82R	LS	1	\$21,375	\$21,375	\$16,625	\$16,625	\$24,924.25	\$24,924.25	\$19,543.02
E. Remove ditch sediment at Sta 64+00R	LS	1	\$24,510	\$24,510	\$18,810	\$18,810	\$29,909.08	\$29,909.08	\$23,451.62
F. Remove ditch sediment at Sta 70+95R	LS	1	\$37,830	\$37,830	\$28,130	\$28,130	\$49,848.49	\$49,848.49	\$39,086.03
G. Remove trail sediment at Sta 275+00 to 288+00L	CY	2200	\$23.50	\$51,700	\$18.50	\$40,700	\$26.24	\$57,725	\$45,254
H. Remove trail sediment at Sta 385+00 to 425+00L	CY	6700	\$25.50	\$170,850	\$20.50	\$137,350	\$26.24	\$175,808	\$137,819
I. Remove trail sediment at Sta 458+00 to 473+00L	CY	3100	\$25.50	\$79,050	\$20.50	\$63,550	\$26.24	\$81,344	\$63,767
J. Seeding	AC	9	\$1,500	\$13,500	\$1,500	\$13,500	\$2,184.95	\$19,664.55	\$2,227.74
K. Soil Erosion and Erosion Control	LS	1	\$17,000	\$17,000	\$17,000	\$17,000	\$9,299.14	\$9,299.14	\$9,481.26
<b>GRAND TOTAL (A through K)</b>				\$544,075	\$431,225	\$600,332.32			\$478,386.05
Proposed C/D Landfill Name/Location					Village Landfill				Hawkins

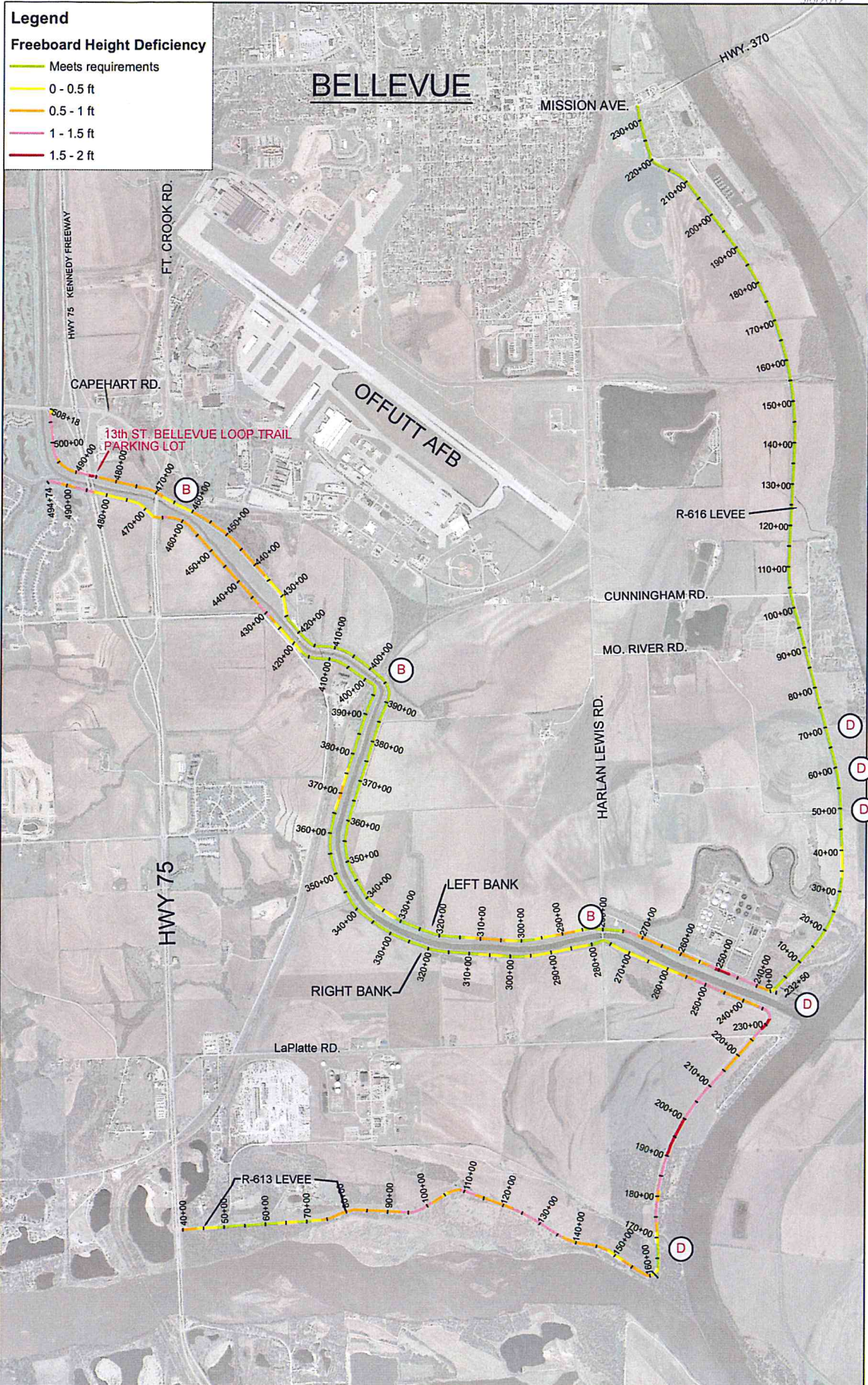
BASE BID	7. TCW Construction				8. Engineer's Opinion of Cost			
	Sarpy County Landfill Disposal Site		Cons. & Demo. Waste Landfill Disposal Site		Sarpy County Landfill Disposal Site		Cons. & Demo. Waste Landfill Disposal Site	
	Unit	Quantity	Unit Cost	Total Cost	Unit Cost	Total Cost	Unit Cost	Total Cost
A. Mobilization & Demobilization	LS	1	\$30,089.49	\$30,089.49	\$	\$	\$20,000	\$20,000
B. Remove ditch sediment at Sta 171+53R	LS	1	\$37,451.83	\$37,451.83	\$	\$	\$14,820	\$11,400
C. Remove ditch sediment at Sta 3+10R	LS	1	\$143,616.12	\$143,616.12	\$	\$	\$58,500	\$45,000
D. Remove ditch sediment at Sta 50+82R	LS	1	\$30,540.94	\$30,540.94	\$	\$	\$12,350	\$9,500
E. Remove ditch sediment at Sta 64+00R	LS	1	\$36,494.08	\$36,494.08	\$	\$	\$14,820	\$11,400
F. Remove ditch sediment at Sta 70+95R	LS	1	\$61,654.47	\$61,654.47	\$	\$	\$25,220	\$19,400
G. Remove trail sediment at Sta 275+00 to 288+00L	CY	2200	\$34.68	\$76,296	\$	\$	\$16	\$28,600
H. Remove trail sediment at Sta 385+00 to 425+00L	CY	6700	\$34.94	\$234,098	\$	\$	\$16	\$107,200
I. Remove trail sediment at Sta 458+00 to 473+00L	CY	3100	\$34.79	\$107,849	\$	\$	\$16	\$40,300
J. Seeding	AC	9	\$1,658	\$14,922.54	\$	\$	\$1,000	\$9,000
K. Soil Erosion and Erosion Control	LS	1	\$23,155.66	\$231,155.66	\$	\$	\$10,000	\$10,000
<b>GRAND TOTAL (A through K)</b>				\$796,268.13	No Bid	\$356,710	\$311,800	
Proposed C/D Landfill Name/Location								

LS: Lump Sum; CY: Cubic Yard; AC: Acre

\* Apparent Low Bid Navarro Enterprise Construction

MISSOURI RIVER LEVEE R-616 & R-613 SEDIMENT REMOVAL PROJECT LOCATION MAP

5/6/2012



Freeboard Map

R-613-616 Levees  
Papio-Missouri River NRD

- (D) STOCKPILED DRAINAGE SEDIMENT LOCATIONS
- (B) BERM SEDIMENT LOCATIONS

