

Agenda Item: 9.b.

Memorandum

To: Programs, Projects and Operations Subcommittee
From: Amanda Grint, Water Resources Engineer
Date: June 2, 2014
Re: Review and Recommendation of Bids Received for Demolition of Missouri River Floodway Purchase Program Buyouts

On June 3, 2014, bids were opened for the demolition of up to 34 structures that are a part of the Missouri River Floodway Purchase Program Buyouts in Sarpy County. Attached maps show the location of the potential structures where demolitions will take place. A copy of the bid tabulation is also attached.

The structures included in the bid are part of the voluntary floodway purchase program and the Hazard Mitigation Grant Program (HMGP). Demolitions will take place within 60 days of closing on the property and 75% of the costs to complete the demolition is eligible for reimbursement through the HMGP grant.

Two (2) bids were received and the range of bids was \$363,940 to \$627,300. Heimes Corp. provided the low bid which translates in to \$14,771 per structure (a discount was given for multiple structures). After closing, notice will be given to begin demolition for each structure. The work is anticipated to begin in June and last through December 2014.

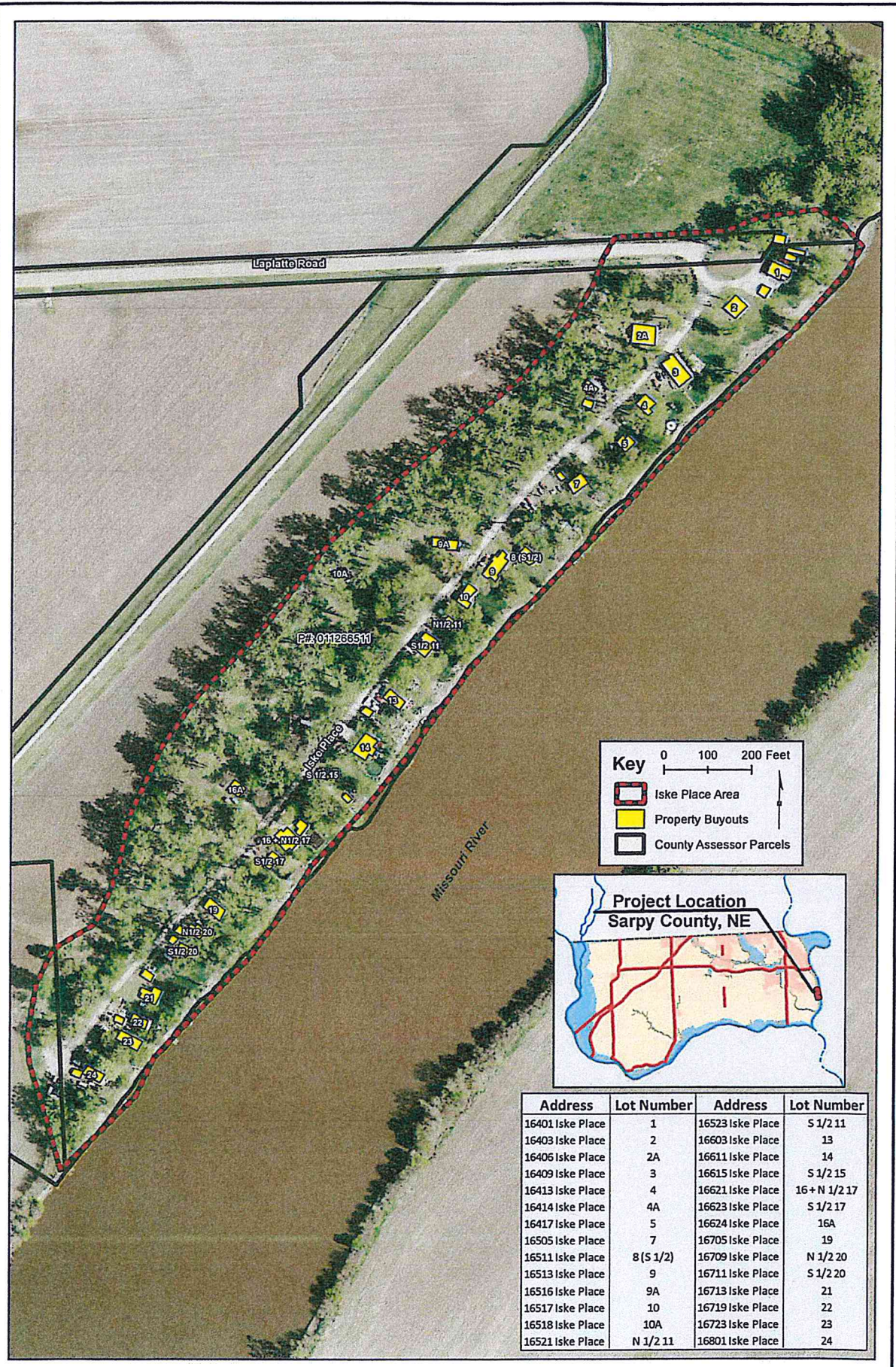
Management recommends that the Subcommittee recommend to the Board that the General Manager be authorized to execute a contract with Heimes Corp. for demolition of up to 34 residential structures for the Missouri River Floodway Purchase Program Buyouts at a cost of up to \$14,771 per structure, subject to changes deemed necessary by the General Manager and approval as to form by District Legal Counsel.

PROJECT: MISSOURI RIVER FLOODWAY PURCHASE PROGRAM - DEMOLITION

BID DATE: JUNE 3, 2014

BID TIME: 2:00 PM

[illegible]



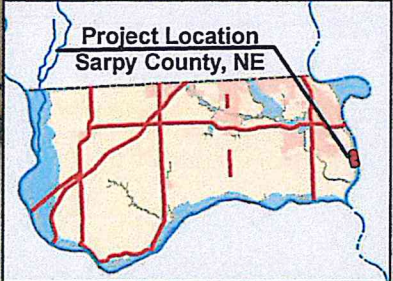
Key

0 100 200 Feet

Iske Place Area

Property Buyouts

County Assessor Parcels



Address	Lot Number	Address	Lot Number
16401 Iske Place	1	16523 Iske Place	S 1/2 11
16403 Iske Place	2	16603 Iske Place	13
16405 Iske Place	2A	16611 Iske Place	14
16409 Iske Place	3	16615 Iske Place	S 1/2 15
16413 Iske Place	4	16621 Iske Place	16 + N 1/2 17
16414 Iske Place	4A	16623 Iske Place	S 1/2 17
16417 Iske Place	5	16624 Iske Place	16A
16505 Iske Place	7	16705 Iske Place	19
16511 Iske Place	8(S 1/2)	16709 Iske Place	N 1/2 20
16513 Iske Place	9	16711 Iske Place	S 1/2 20
16516 Iske Place	9A	16713 Iske Place	21
16517 Iske Place	10	16719 Iske Place	22
16518 Iske Place	10A	16723 Iske Place	23
16521 Iske Place	N 1/2 11	16801 Iske Place	24

F:\Projects\011-2447\WTR\GIS\Iske_ElbowBend_Buyouts.mxd User: lplatt

PROJECT NO: 011-2447

DRAWN BY: KAP

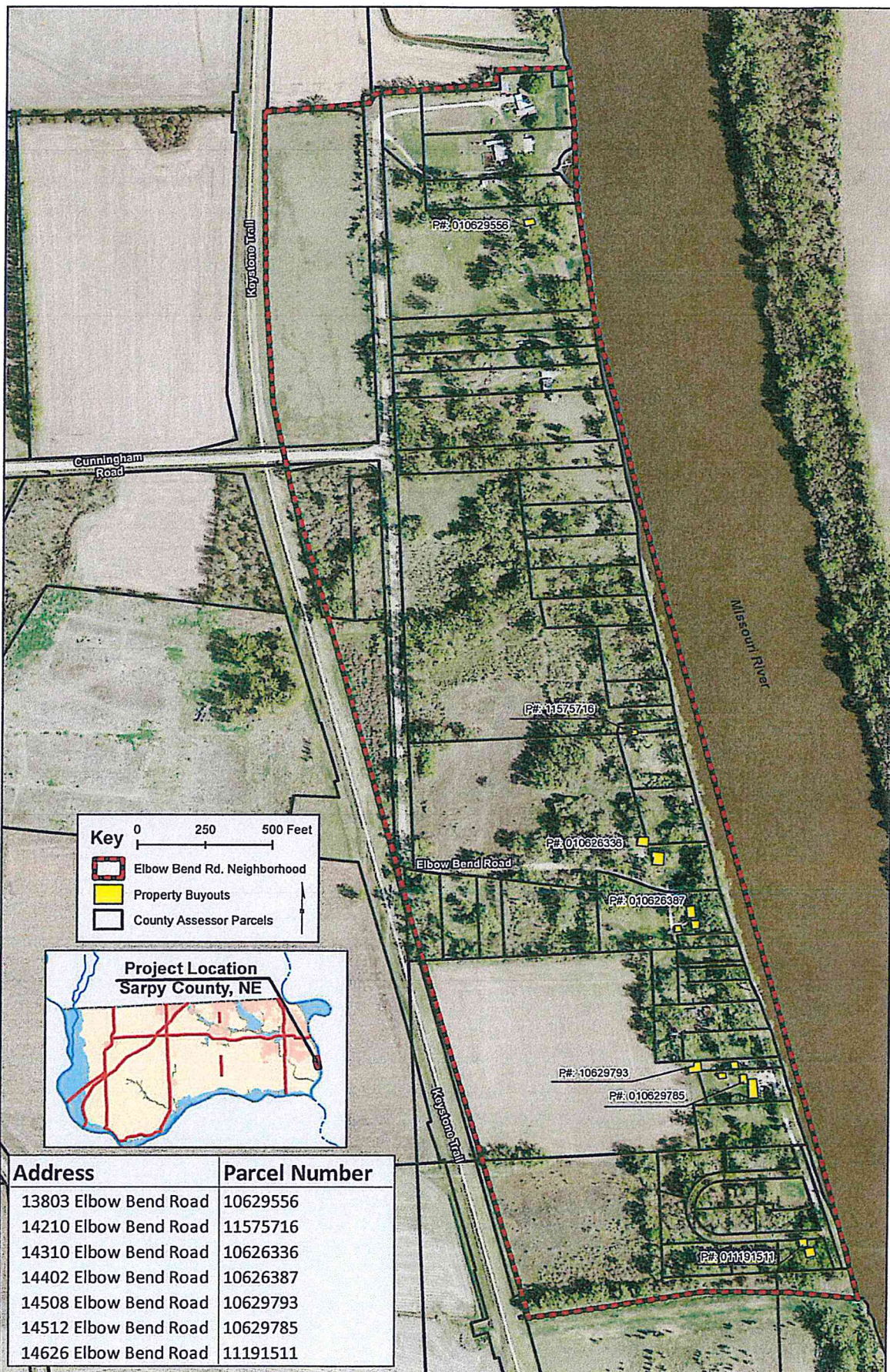
DATE: July 03, 2012

Location Map
Iske Place Neighborhood
Sarpy County, NE

OLSSON ASSOCIATES

11111 Lincoln Ave. Suite 101
P.O. Box 9420
Lincoln, NE 68501-9420

TEL: 402.474.1511
FAX: 402.474.1512
www.olsson-associates.com



Address	Parcel Number
13803 Elbow Bend Road	10629556
14210 Elbow Bend Road	11575716
14310 Elbow Bend Road	10626336
14402 Elbow Bend Road	10626387
14508 Elbow Bend Road	10629793
14512 Elbow Bend Road	10629785
14626 Elbow Bend Road	11191511

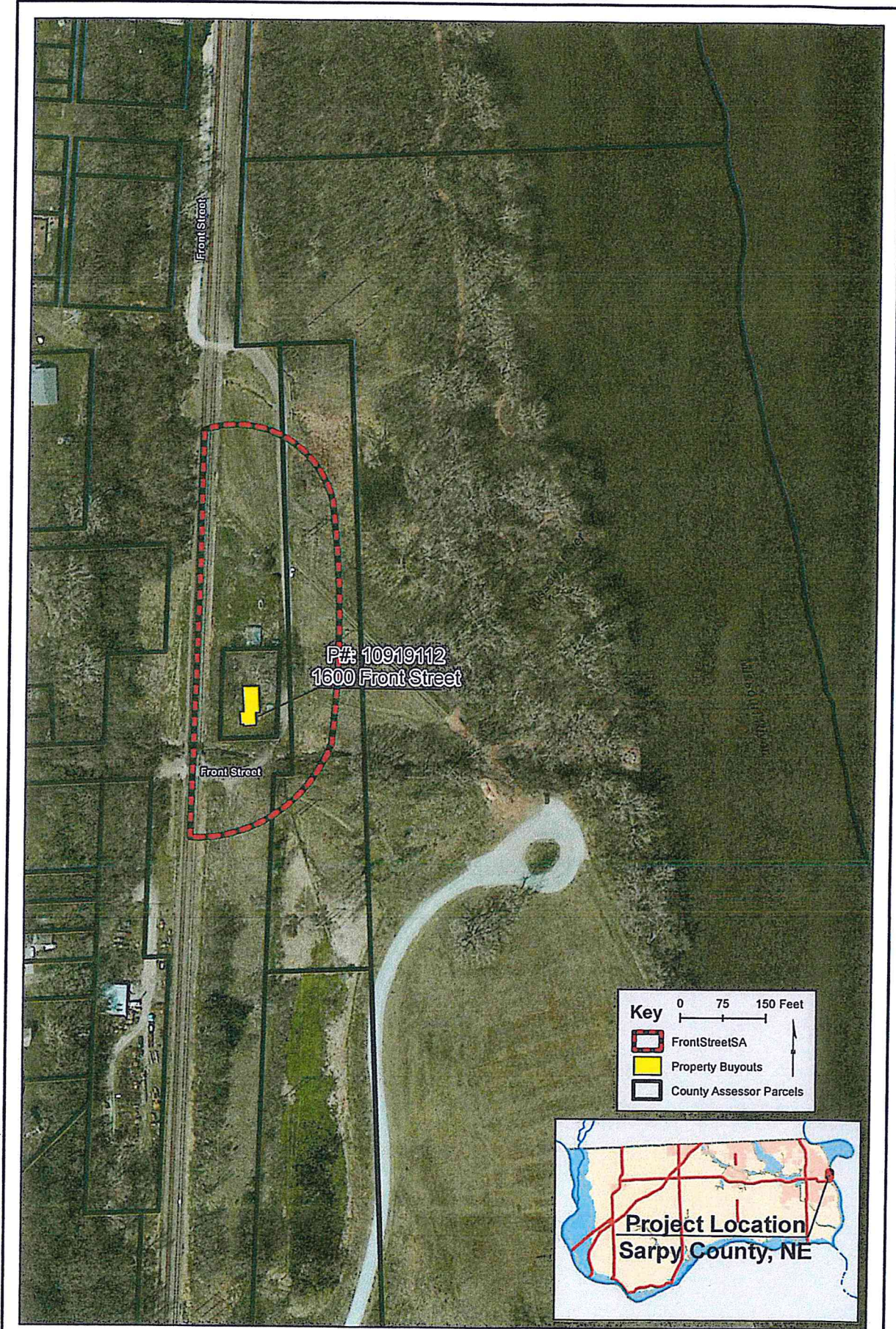
F:\Projects\011-2447\WTR\GIS\Slide_ElbowBend_Buyouts.mxd User: kpratt

PROJECT NO: 011-2447	
DRAWN BY: KAP	
DATE: July 13, 2012	

Location Map
Elbow Bend Neighborhood
Sarpy County, NE

OLSSON ASSOCIATES
3111 Lincoln Blvd., Suite 111
 P.O. Box 1402
 Lincoln, NE 68501-0108
TEL: 402.474.0211
 FAX: 402.474.0100
 www.olsson-associates.com

F:\Projects\011-2447\WFRS\GIS\Mapa_ElbowBend_Buyouts3.mxd User: kplafie



OA PROJECT NO: 011-2447

DRAWN BY: KAP

DATE: January 2013

Location Map
1600 Front Street
Sarpy County, NE

OLSSON
ASSOCIATES

11111 Leavenworth, Suite 111
P.O. Box 1000
Lincoln, NE 68501-1000

TEL: 402.476.2511
FAX: 402.476.1112
www.olssonassociates.com

FIGURE

1C