

MEMORANDUM

TO: Programs, Projects and Operations Subcommittee

SUBJECT: Wetland/Stream Channel Mitigation Bank/ Wildlife Habitat Area for Pigeon/Jones Watershed Offline Storage Area

DATE: March 31, 2010

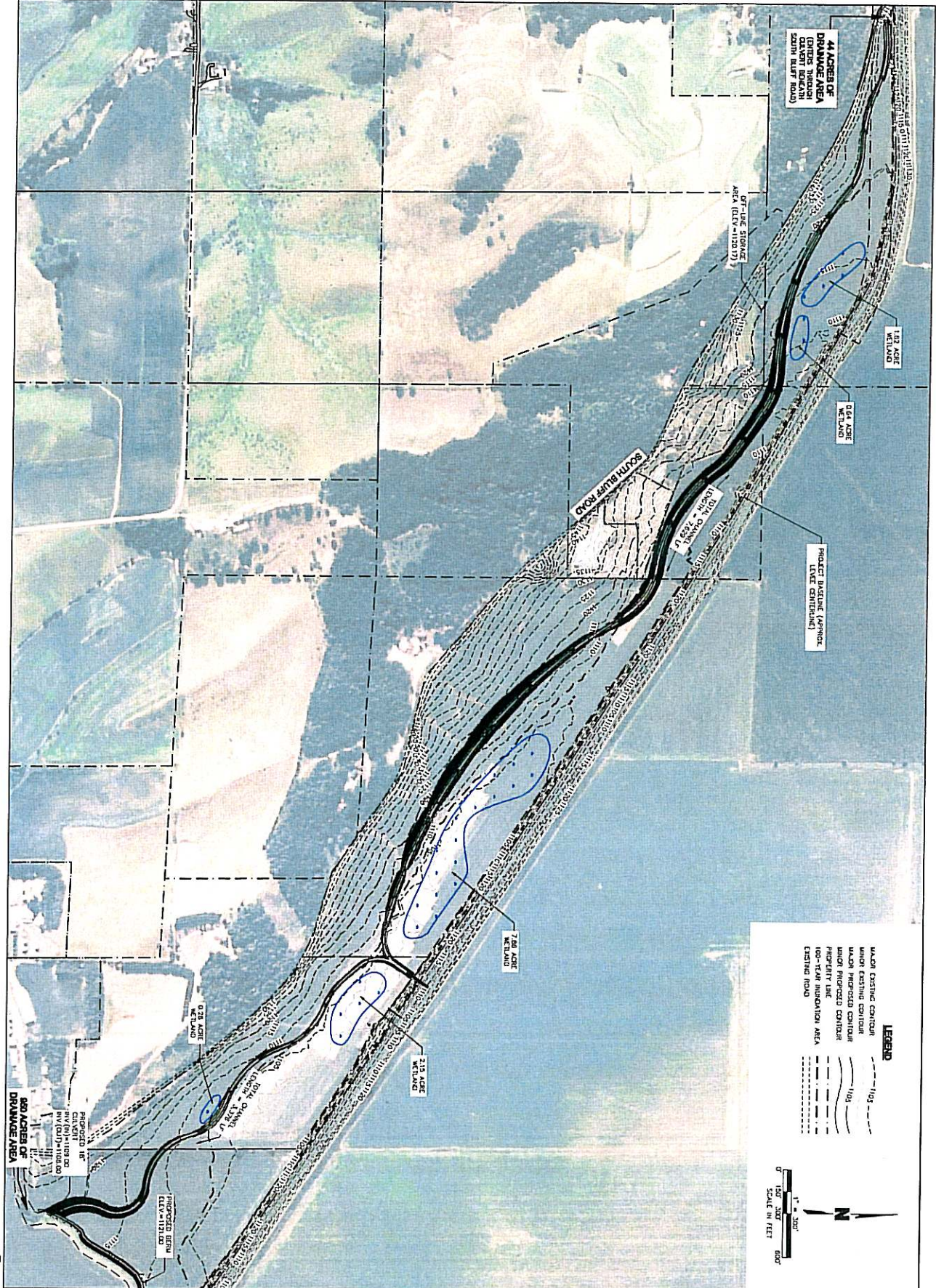
FROM: Ralph Puls, Land and Water Programs Coordinator

Part of the Pigeon/Jones Watershed Project is to provide flood control in the area downstream of the P/J Site # 15 Recreation/ Flood Control Dam. Downstream of the P/J Site #15 dam, Jones Creek converges with Pigeon Creek at a point just upstream from the South Bluff Road bridge, and from there enters into the Pigeon Creek channel/levee system that carries the water to the Missouri River. This Pigeon Creek Levee System is part of the District's Elk/Pigeon Improvement Project Area (IPA). Currently, during high water events in the watershed, only a portion of the runoff water flows through the levee system because it is not tied off to high ground at the upstream end. Some of the runoff water flanks the levee system and flows across Highway 35, and some flows outside of the levees and floods the bottomlands adjacent to the Pigeon Creek. To prevent flooding of the bottomland, and to prevent water from flowing across Highway 35, a tie back levee extension is being constructed as part of the P/J Site #15 project. Also, part of the project, a two mile segment of levee is being lowered so that if water exceeds the capacity of the levee system, it would flow into an offline storage area. This area is located on the South side of the Pigeon Creek levees, between it and South Bluff Road. This area is shown on the attached drawing.

The plan to date has been to acquire the area needed for the offline storage area through flowage/flooding easements; however, now it has been determined there is a need for stream channel and wetland mitigation acres to meet the environmental mitigation requirements for the proposed erosion control/sediment retention dams that are a part of the overall Pigeon/Jones Watershed Project. The need for mitigation lands was not required when this project was originally approved by the Board. In order to obtain 404 permits that are required in order to build these structures, the loss of wetlands and stream channel must be mitigated. This can be done by establishing the Wetland/Stream Channel Mitigation Bank in the Offline Storage Area.

Preliminary estimates from Olsson Associates indicate that approximately 12.6 acres of wetland could be created, 7,629 feet of intermittent stream channel and 3,376 feet of intermittent stream could be established and the area would be planted to native grasses to establish wildlife habitat. The total area of offline storage area is approximately 170 acres. In order to develop these mitigation banks, fee title to the land would be required rather than easements except for the land that are in acreages adjacent to South Bluff Road. Those limited acres would not be required for the mitigation banks and could still be acquired by a flowage/flooding easement.

- **It is recommended that the Subcommittee recommend to the Board of Directors that the Pigeon/Jones Site #15 Project plan be revised to reflect establishment of the proposed wetland/stream channel mitigation bank/wildlife habitat area.**



0.28 ACRES WETLAND
 2.13 ACRES WETLAND
 7.84 ACRES WETLAND
 0.64 ACRES WETLAND
 1.83 ACRES WETLAND

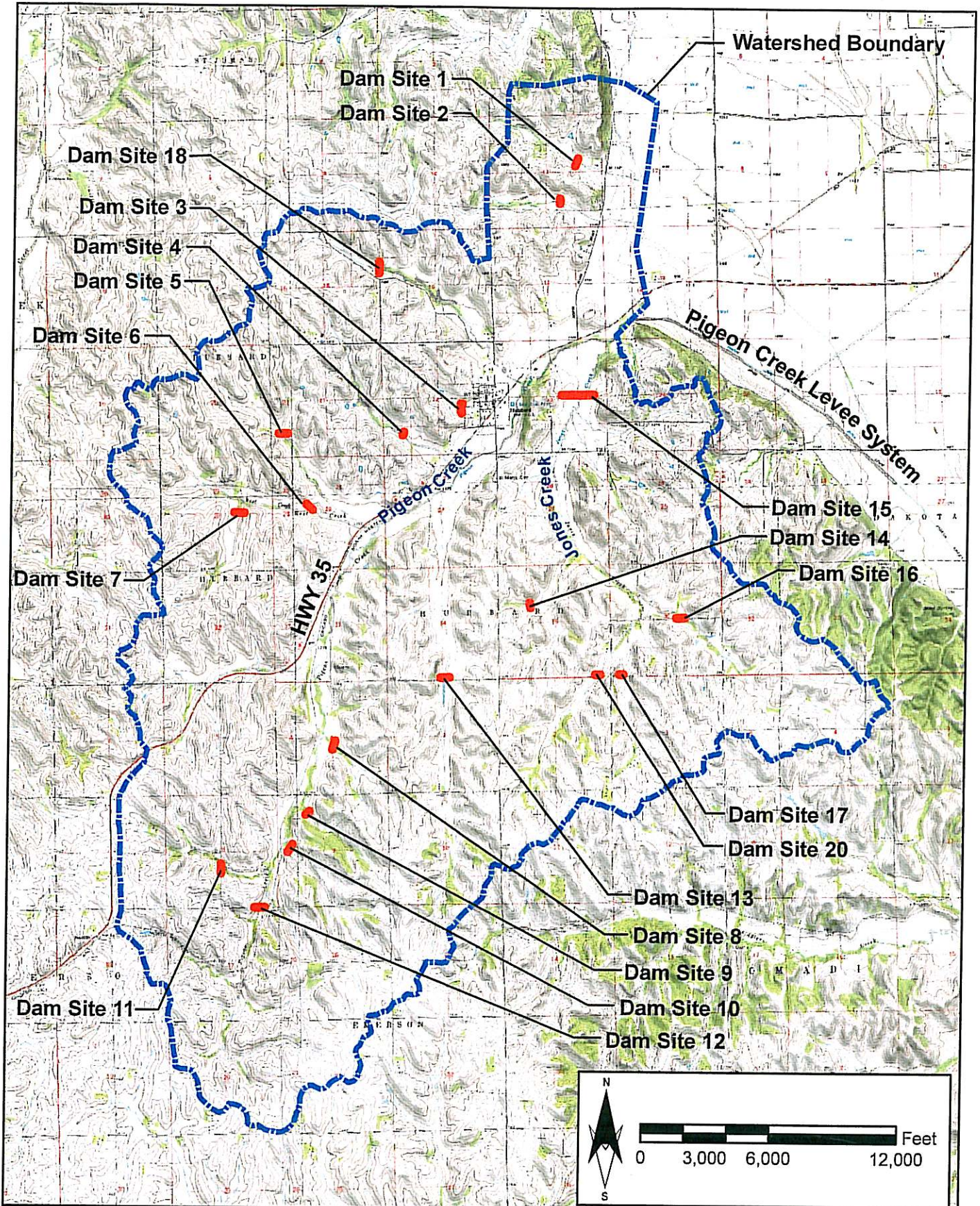
OFF-LINE DETENTION AREA EXHIBIT
 PIGEONJONES SITE 15
 OFFLINE STORAGE AREA
 HUBBARD, NEBRASKA

REV. NO.	DATE	REVISION DESCRIPTION

2010 REVISIONS

MOLSSON ASSOCIATES

2111 South 67th Street
 Omaha, NE 68138
 TEL: 402.341.1118
 FAX: 402.341.1288
 www.molsson.org



PROJECT: 2004-0219
 DRAWN BY: JMF
 DATE: DECEMBER 2004

**PROPOSED NRCS STRUCTURE
 LOCATION MAP**



FIGURE
 2