

Memorandum

To: Programs, Projects and Operations Subcommittee
From: Brian L. Henkel, Groundwater Management Engineer
Date: November 08, 2011
Re: Development of a Voluntary Integrated Management Plan for the Lower Platte River Basin

LB764, introduced in the 2010 legislative session, gave authority to Nebraska's Natural Resources Districts (NRD's) to voluntarily develop Integrated Management Plans (IMP). The bill was a result of a resolution adopted by the Nebraska Association of Resources Districts (NARD) and is intended to improve NRD's abilities to manage the surface water and groundwater in conjunction and in cooperation with the Nebraska Department of Natural Resources (NDNR). A voluntary IMP is an important planning tool and is a proactive approach to the management of the water resources.



IMP's, as planning tools, offer greater flexibility of management of both surface water and groundwater through cooperation with the state. Without integrated management, the surface water and groundwater systems are managed mostly independently by the DNR and the NRD's. Integrated management recognizes the interconnectedness of these waters and develops strategies to ensure their long term viability and sustainability. Proactive planning to ensure a sustainable supply increases the security of the water supply for the municipal, agricultural and industrial users of the District.

District staff and management have been discussing a cooperative approach to integrated management with the Lower Platte South and the Lower Platte North NRD's. A cooperative approach in the Lower Platte will provide opportunities for cost savings through shared data collection and analysis. Cooperation can also provide consistency in the planning process through a basin-wide management plan.

Staff recommends that the Programs, Projects and Operations Subcommittee recommend to the Board of Directors that the General Manager be authorized to develop a voluntary integrated management plan for the portion of the District in the Lower Platte River Basin.



Boundaries

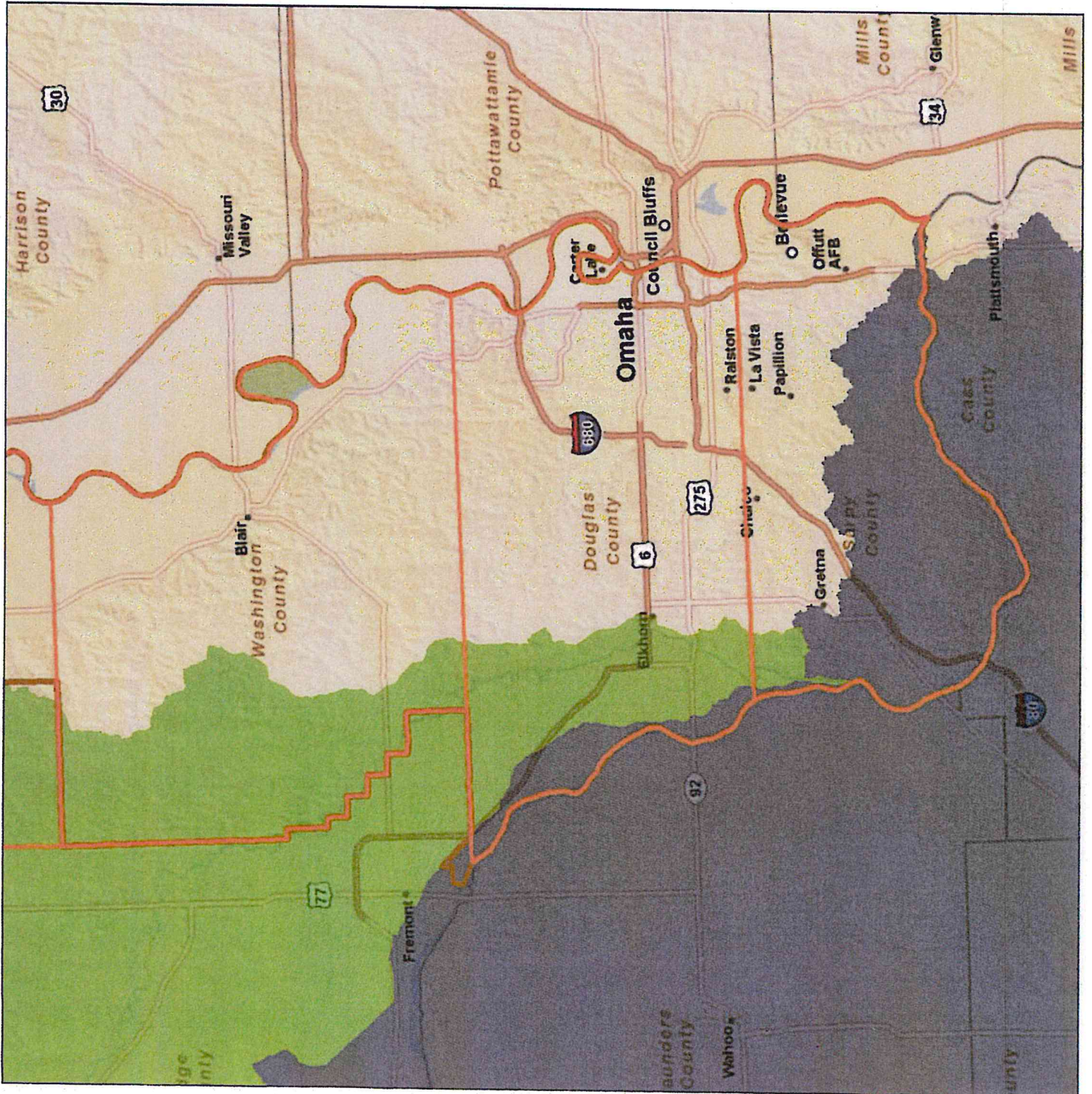
-  Counties
-  Papio NRD

Basin Areas

-  Elkhorn
-  Lower Platte





NOT TO SCALE



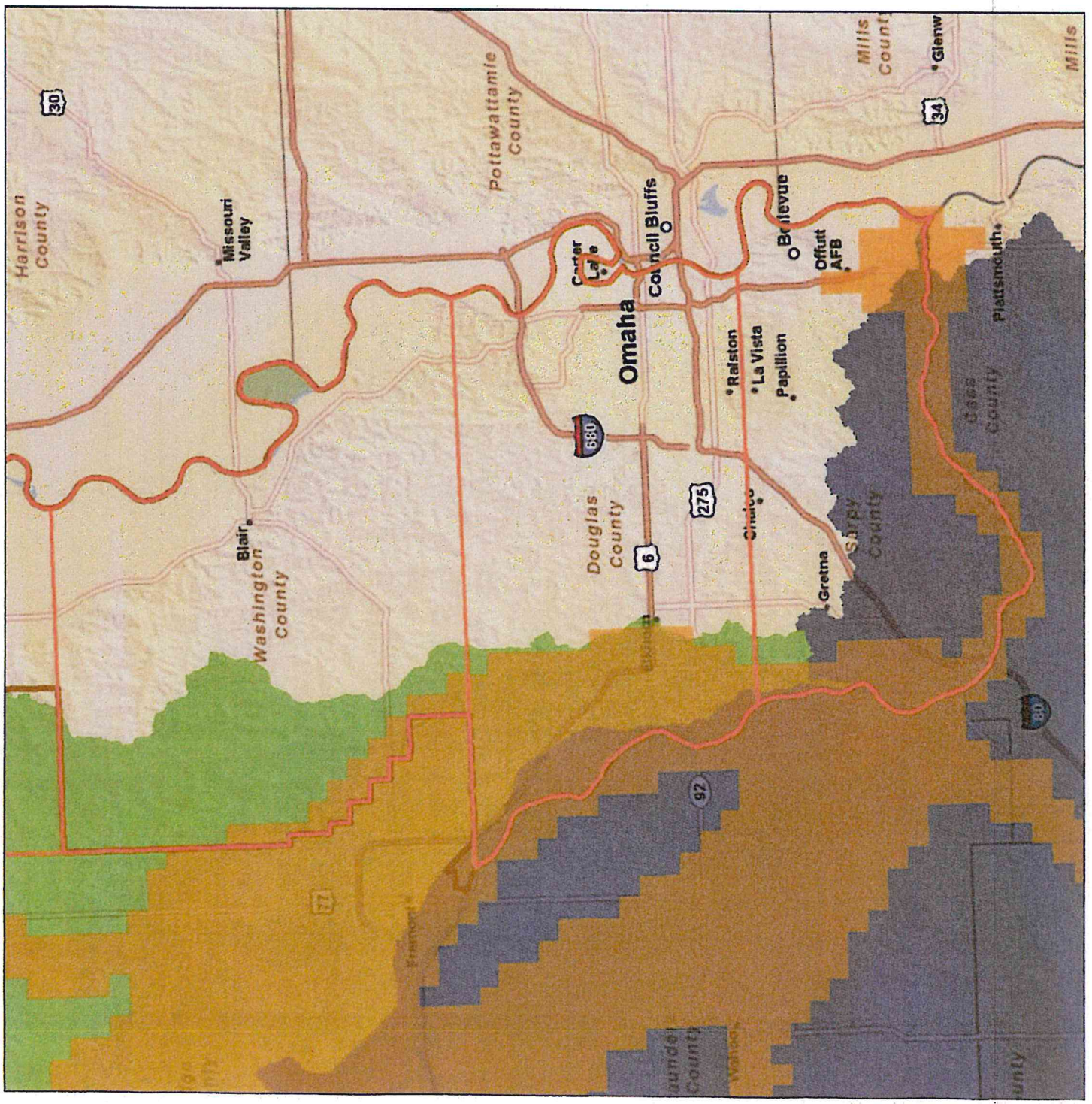


Boundaries

-  Counties
-  Papio NRD

Basin Areas



-  Groundwater
-  Elkhorn
-  Lower Platte



NOT TO SCALE



Boundaries

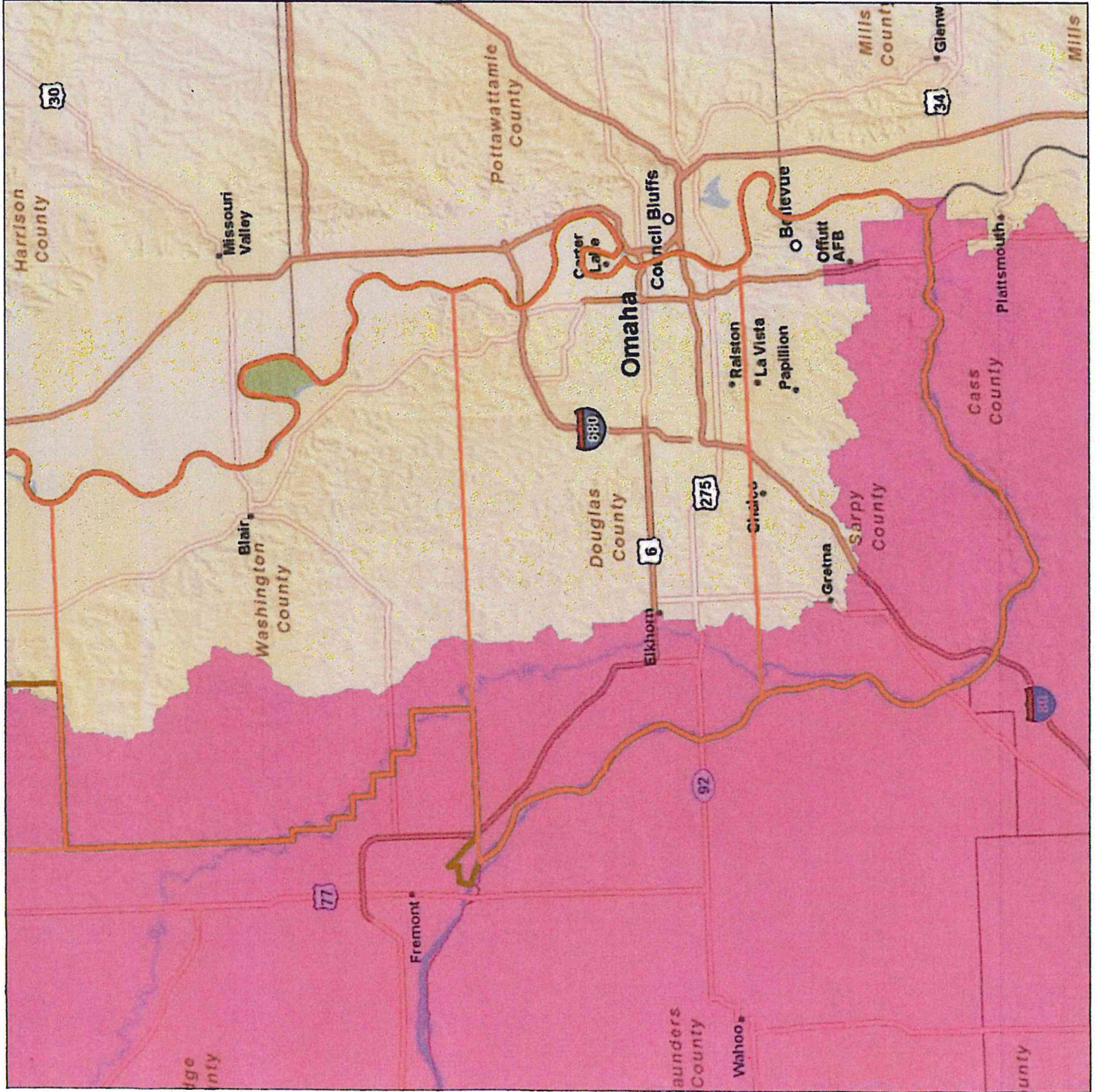
-  Counties
-  Papio NRD

IMP Areas

-  Lower Platte



NOT TO SCALE

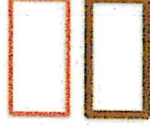


**PAPIO-MISSOURI RIVER
NATURAL
RESOURCES
DISTRICT**



www.papionrd.org

Boundaries



Countries

Papio NRD

IMP Areas



Papio

Lower Platte



NOT TO SCALE

