



From the Coordinator...

Monthly Report for the Lower Platte River Corridor Alliance for the Month of Nov 2006

Rodney L. Verhoeff, Coordinator

LPRCA Planning Retreat

Looking back at accomplishments and at those things which didn't go so well are all part of being a successful organization. However, we can't just look back, we also need to look at what is happening today and what we want to happen tomorrow. This is the theme of this year's planning retreat (and in the vein of the great novel by Charles Dickens' - *A Christmas Carol*):

The LPRCA: PAST, PRESENT, & FUTURE

In 2002, the LPRCA held an in-depth Strategic Planning Exercise called a SWOT Analysis (Strengths, Weaknesses, Opportunities, and Threats). This helped the Alliance look at what it does well, what it needs to work on, focus on opportunities, and identify barriers to achieving its goals. Then in 2004/05, we held a planning retreat at Camp Kitaki that focused on building teamwork and trust among LPRCA members. At this meeting, the group decided to hold planning retreats every 2 years and then an in-depth long-range strategic planning effort every 6 years. We are in year 4 of that cycle so we are holding a less in-depth effort this year to review accomplishments and set direction for the coming years. The 2006 LPRCA Planning Retreat will be held on Tuesday, December 19th at Camp Kitaki near South Bend from 9:00 a.m. (sharp) to 3:30 p.m. Meals are included in this event and an RSVP is required by December 15th. This is your opportunity to help guide the direction of the LPRCA! A schedule is attached to this report.

GREETINGS FROM THE COORDINATOR

It's been a great year with a lot of accomplishments including our first ever River Summit and completion of the Hwy 50 and Camp Ashland River Obstruction Removal Projects. These are in addition to the many outreach and education efforts and events such as the Water Quality Open and the Aitboat Tour. At our planning retreat to be held on December 19th, we will reflect upon these activities and look at what direction we will head in the next couple of years. A lot is happening on and near the Lower Platte River and we are the forefront of the decision-making process. This provides us a great view of the future of the corridor. I look forward to the upcoming year and all of your continued support! Have a great holiday season.



Featured Project

Camp Ashland River

Obstruction Removal Project

Yes, this project is featured again this month, primarily because it is finished except for a few minor clean-up and seeding tasks. After three weeks of intensive work, phase 1 of the Camp Ashland River Obstruction Removal Project wrapped up last Thursday with a walkthrough. Six former Highway 6 bridge supports were removed to a depth of 6-8 feet below grade. Each support was approximately 4 feet in diameter, wrapped in steel and filled with concrete and wooden supports. The consultant, Ziegers Construction, built a causeway to reach the obstructions and then used back hoes and a hydraulic breaker to peel the steel off and breakup the concrete and wood. Six additional supports remain and are expected to be removed next year during phase 2 of this project. A big thank you to all of the project sponsors: LPSNRD, LPNDRD, P-MRNRD, the Nebraska Military Department, and the Nebraska Game & Parks Commission, and LPRCA member agencies. Recall, that the LPRCA identified 12 locations along the Lower Platte River Corridor where obstructions were located and posed safety, flooding, and natural habitat degradation issues. Once we complete part 2 of the Camp Ashland project, two of the sites will be completed (Camp Ashland & Hwy 50), and a third that was undertaken by the LPNDRD (North Bend area) should be complete by the end of 2007.

Programs & Projects

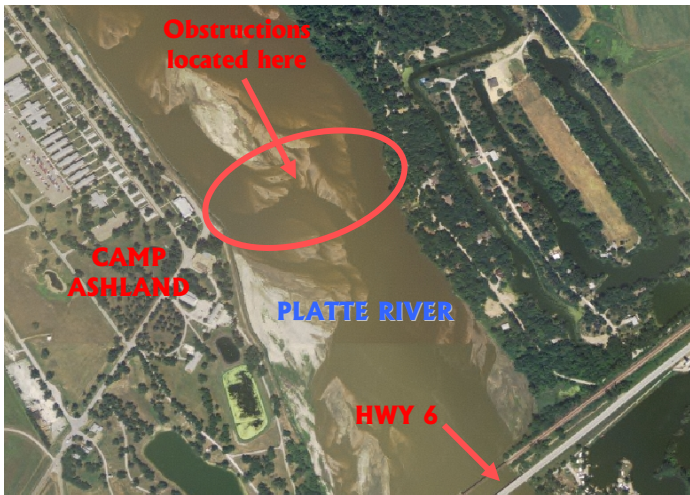
Camp Ashland River Obstruction Removal Project

Below are photos and a map of the project from the time prior to obstruction removal to last Thursday when we did the walkthrough with the consultant:

BEFORE



AFTER



Upcoming/Recent Meetings & Events

LPNNRD Board of Directors Meeting – Monday, Dec 11, 2006 * 5:30 p.m. * LPNNRD Office – 511 Commercial Road - Wahoo.

PMRNRD Board of Directors Meeting – Thursday, Dec 14, 2006 * 8:00 p.m. * Nat. Res. Center 8901 S. 154th St. * Omaha

LPSNRD Board of Directors Meeting – Wednesday, Dec 20, 2006 * 2:00 p.m. * 3125 Portia Street in Lincoln.

LPRCA Quarterly Meeting – January 18th, 2007 * 9 – Noon * LPSNRD in Lincoln