

Memorandum

To: Programs, Projects and Operations Subcommittee

Subject: Tern and Plover Conservation Partnership – Request for Funding

Date: January 3, 2007

From: Gerry Bowen

At the December meeting, the Board considered a funding request from the Tern and Plover Conservation Partnership (TPCP), a cooperative venture, including the University of Nebraska-Lincoln (UNL) and the Nebraska Game and Parks Commission (NGPC). Their mission is to protect the endangered least tern and the threatened piping plover, and to prevent and resolve conflicts with the sand and gravel industry. The species use the sand and gravel mining areas for nesting. The request was for a contribution of \$5,000 in 2007 to help fund seasonal personnel to monitor tern and plover nesting sites along the Platte and Elkhorn Rivers, and to help resolve conflicts as they arise throughout the year.

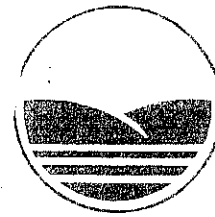
The Board raised several questions (see attached letter) regarding the TPCP, its organization, its budget and other funding sources. Their response to our inquiry is attached.

Management recommends that the Subcommittee recommend to the Board that the District provide financial assistance in the amount of \$5,000 to support the 2007 program activities of the Tern and Plover Conservation Partnership.

December 15, 2006

FILE COPY

PAPIO-MISSOURI RIVER



NATURAL
RESOURCES
DISTRICT

Ms. Renae Held
Tern and Plover Conservator
153C Hardin Hall
University of Nebraska-Lincoln
3310 Holdrege
Lincoln, Nebraska 65586-0931

8901 S. 154TH ST
OMAHA, NE 68138-3621
(402) 444-6222
FAX (402) 895-6543
www.papionrd.org

Re: Tern and Plover Conservation Partnership (TPCP)
Request for Papio-Missouri River NRD Funding

Dear Ms. Held:

At the December 14, 2006 Board of Directors meeting, the Papio-Missouri River NRD delayed action on your funding request upon receipt of additional information as noted below:

1. A more detailed description of the purpose and activities of the TPCP. There was concern expressed by Directors that labeling of nests make them more attractive to would-be vandals. Are there efforts to discourage nesting of birds in certain areas?
2. What specific conflicts arise and how are they resolved?
3. How and when was the TPCP organized (is it a 501c3 corporation?).
4. How is the TPCP governed (is there a board of directors?).
5. A detailed budget showing income and expenses over the past three years.

Please respond to the above at your earliest convenience, however a response by January 3, 2007 would be appreciated since we need to provide this information to Board members at that time. In addition, we ask that you, or another staff person, attend the January 9, 2007 Programs, Projects, and Operations Subcommittee to support the TPCP's funding request.

If you have any questions, please contact me.

Sincerely,


Gerry Bowen
Natural Resources Planner

1/3/2007

Term and Plover Conservation Partnership

Funding by Source:

Funding Year	NETF	UN-L (in kind)	NGPC		State Wildlife Grant	Mining Co. & Partners		Nat. Fish & Wildlife Grant	Totals
			(in kind)	(cash)		(in-kind)	(cash)		
04-05	\$66,500	\$78,600	\$74,110	\$550	\$22,750	\$24,425	\$0	\$18,500	\$285,435
05-06	\$43,530	\$50,000	\$13,200	\$0	\$89,846	\$8,075	\$0	\$0	\$204,651
06-07	\$88,642	\$23,200	\$13,200	\$7,000	\$30,000	\$8,117	\$0	\$0	\$170,159
07-08	\$91,841	\$32,200	\$47,710	\$0	\$0	\$8,208	\$12,500	\$0	\$192,459
Totals	\$290,513	\$184,000	\$148,220	\$7,550	\$142,596	\$48,825	\$12,500	\$18,500	\$852,704

Expenses by Category:

Category:	FY 04-05	FY 05-06	FY 06-07	FY 07-08
Salary & Benefits	\$ 137,506	\$ 131,106	\$ 122,442	\$ 107,941
Volunteer Hours (value)	\$ 22,025	\$ 7,275	\$ 7,342	\$ 7,408
Equip./Supplies/Misc.	\$ 125,904	\$ 66,270	\$ 40,375	\$ 77,110
Totals	\$ 285,435	\$ 204,651	\$ 170,159	\$ 192,459

Summarized by GB

Renae Held
153C Hardin Hall
University of Nebraska - Lincoln
3310 Holdrege
Lincoln, NE 68583-0931

December 27, 2006

Mr Bowen:

I am writing in regards to your request for more information about the Tern and Plover Conservation Partnership (TPCP), concerning our request for \$5,000 in funding for a seasonal technician. The questions placed were as follows:

1. A more detailed description of the purpose and activities of the TPCP. There was a concern expressed by Directors that labeling of nests made them more attractive to would-be vandals. Are there efforts to discourage nesting birds in certain areas?

Endangered least terns (*Sterna antillarum athalassos*) and threatened piping plovers (*Charadrius melodus*) nest in Nebraska on river sand bars, on gravel mine spoil piles, and on the shorelines of Lake McConaughy. Least terns and piping plovers are imperiled in Nebraska primarily because of loss and degradation of their natural breeding habitat: high elevation, barren sand bars in the middle of major rivers. The Tern and Plover Conservation Partnership was established in 1999 to protect these and other river birds in a way that reduces conflicts with private industry and that educates and involves local communities.

Terns and plovers nesting at sand and gravel mines in Nebraska are particularly prone to predation and disturbance problems. Avoidance of conflicts with mining operations is imperative for protection goals, given that severe disturbance can lead to mortality of adult and young birds as well as nest loss. Furthermore, the presence of these protected birds can delay mining activities, causing hardship and loss of income. Partnership activities are conducted on the lower Platte River from Columbus to Plattsmouth, the Elkhorn River from Norfolk to Fremont, and the Loup River system.

Nests are not individually marked at mines but the entire area of the colony is roped off with tree rope and nesting signs (psychological fencing). Since most mines are only accessible by mine personnel and have their own fencing and "no trespassing" signs, public access is limited. Marking colony boundaries would aid to the prosecution of vandals in the unlikely event of his happening. Tern and plover nests and eggs are highly cryptic and if not protected may be unknowingly destroyed by trespassers, especially if they do not know that the protected birds are present in the area. We have concluded, in order to eliminate any confusion, psychological fencing and nesting signs are vital in that it lets all mine personnel know exactly where nesting colonies are and where they can and cannot perform mining activities. This is especially important with new employees or contractors.

2. What specific conflicts arise and how are they resolved?

Meetings with mine supervisors are conducted throughout March and April, by the Program Coordinator and technicians, to identify potential conflicts with nesting terns and plovers. Conflicts included plans to move slurry discharge pipes into possible nesting areas, moving of sand spoil piles, use of roadways in or near potential nesting areas, and moving of equipment (See Figure 1). After sites are evaluated, mylar deterrents and gravel/driftwood attractants are used as necessary to move nesting birds away from potential conflict areas (See Figure 2). Five-meter long mylar flags are erected in a 5-meter grid pattern over the entire affected area.

In 2003 the Partnership also introduced the use of a fence-like barrier of chicken wire (~ 3 feet high) on either side of any road in or near colonies. This is used to deter chicks from entering roadways. The chicken wire is anchored to wooden stakes with staples and the bottom edge of the wire buried to prevent chicks from becoming caught underneath.

Figure 1

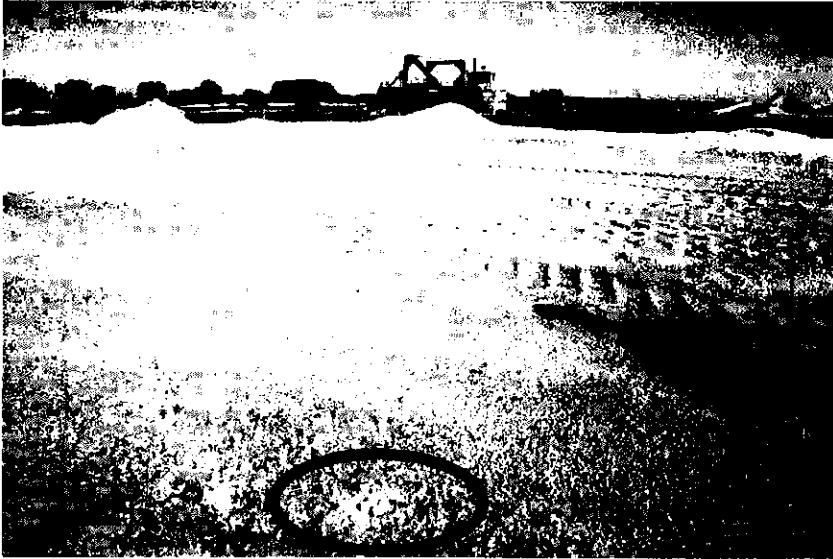
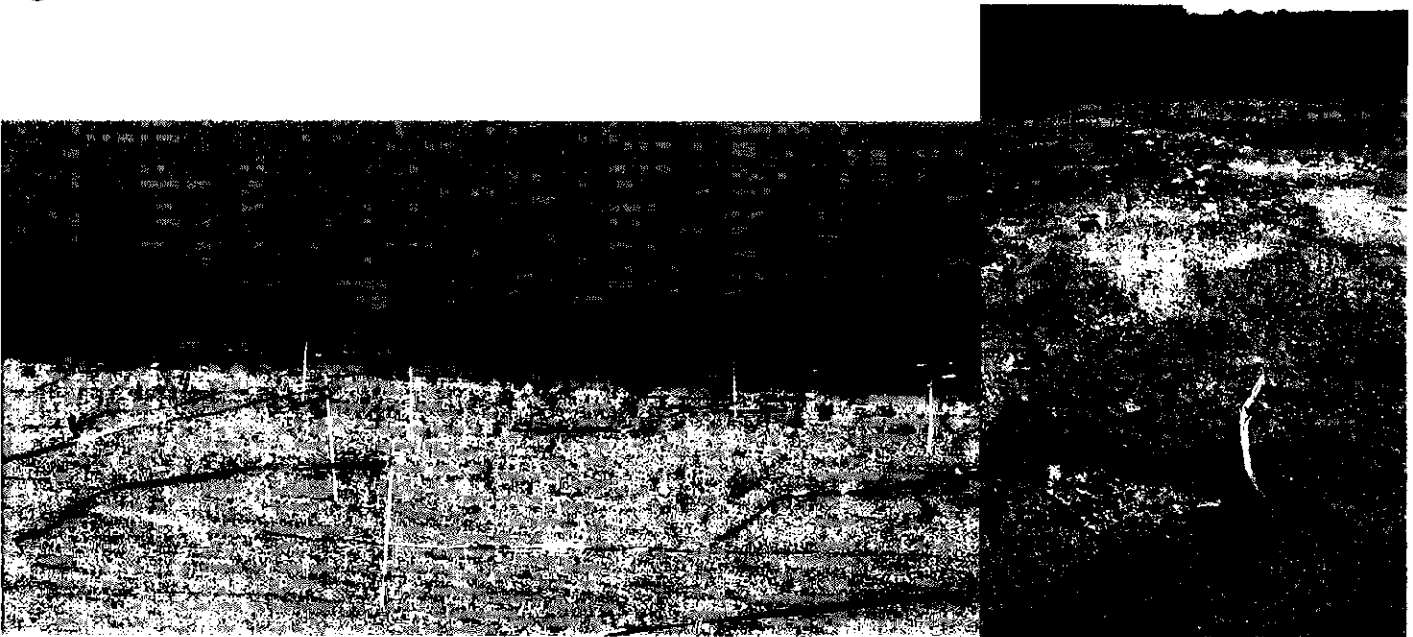


Figure 2



3. How and when was the TPCP organized?

The TPCP was formed in 1999 through the work of John Dinan, Nebraska Game and Parks Commission (NGPC) and Ron Johnson and Jeanine Lackey, University of Nebraska – Lincoln (UNL). Thesis work by Jeanine Lackey regarding the use of sand and gravel mines showed by terns and plovers showed that intensive management of these sites could reduce conflicts and increase productivity. The TPCP is a proactive, voluntary, and non-regulatory program, which decreases the need for involvement by law enforcement. The program has been very successful at increasing tern and plover productivity, while minimizing any delays in gravel mine production. The TPCP is a University program, not a non-profit, and all employees are UNL Cooperative Extension appointment employees.

4. How is the TPCP governed (is there a board of directors)?

Currently the program is run by the Program Coordinator, with a great deal of input from the Coordinator's two supervisors: Joel Jorgensen (NGPC) and Ron Johnson (UNL). Mine administrators and staff

are contacted at the beginning of each season to discuss TPCP activities. Additionally, Partners are contacted for input regarding highly important program decisions, such as adding new partners or implementing new management activities that will directly affect the mine industry. In the beginning of the Partnership we focused on building trust and initiating and maintaining non-confrontational communication with the industry. That level of trust has been established and we have a highly successful working relationship with the industry. We will be forming a board of directors in the beginning of 2007; this board will consist of representatives from all agencies/entities that contribute funding or in-kind match (e.g. industry, UNL, NGPC, NRD's, granting agencies, etc.) This will be an important part of the project as we expanding our funding sources and we would like to have input from all contributing partners.

5. Budget attached (see Attachment A).

Sincerely,

Renae J. Held - Program Coordinator, Tern and Plover Conservation Partnership

Joel Jorgensen – Non Game Bird Program Manager, Nebraska Game and Parks Commission



**The Nebraska
Environmental Trust**

preserving NATURAL NEBRASKA™ for future generations

NEBRASKA ENVIRONMENTAL TRUST FUND

H1. Project Sponsor: Tern and Plover Conservation Partnership

H2. Project Name: Common Sense Conservation of Endangered Species * = match, In-Kind or Supplies

Column A July 2004 – June 2005	Column B	Column C	Column D	Column E	Column F	
1. Source of Funds ▶	Nebraska Environmental Trust	University of Nebraska	Nebraska Game & Parks	State Wildlife Grants	Mining Cos. & other partners	National Fish and Wildlife Foundation
2. Budget Category ▼						
3. Program Coordinator Salary/benefits	43,676	\	\			
4. Outreach Coordinator Salary/benefits						14,900
7. Extension Wildlife Specialist, Non-game Bird Program Manager & Budget Manager		*29,400	*7,500			
8. Regional Wildlife Assistant				19,530		
9. Gravel Company Personnel and Equipment Time					*11,850	
10. Volunteer Hours					*10,175	
11. Deterrent Materials	1,000			50		
12. Educational Materials	1,000			300	*2,400	600
13. Office & Warehouse Space			*3,960			
14. Office Supplies	1,950			100		1,000
15. Computer Equipment	3,174	*9,000				
16. Telephone, Fax, & Copies, Mailing	2,500			700		
17. Books				50		



**The Nebraska
Environmental Trust**

preserving NATURAL NEBRASKA™ for future generations

NEBRASKA ENVIRONMENTAL TRUST FUND

H1. Project Sponsor: Tern and Plover Conservation Partnership

H2. Project Name: Common Sense Conservation of Endangered Species * = match, In-Kind or Supplies

Column A July 2004–June 2005 Cont	Column B	Column C	Column D	Column E	Column F	
1. Source of Funds ▶	Nebraska Environmental Trust	University of Nebraska	Nebraska Game & Parks	State Wildlife Grants	Mining Cos. & other partners	NFWF
2. Budget Category ▼						
18. Video Camera Accessories & Video Cameras	2,000	*30,000	*6,000	\		
19. Safety Training, Presentations, and Conferences	3,000	\	550	550		1,000
20. Vehicle Use	6,000		*6,000	1,420		
21. T-shirts and Hats for Volunteers						
22. Volunteer Recognition Picnic						1,000
23. Nest Enclosures						
24. Fencing Materials	1,500		*35,000			
25. Repairs	200			50		
26. Laser Color Printer		*1,500				
27. Nesting Area Signs			*2,100			
28. Binoculars, scopes, and tripods	500	*8,700	*6,550			
29. Airboat			*7,000			
30. Techs				22,500		



NEBRASKA ENVIRONMENTAL TRUST FUND APPLICATION BUDGET YEAR ONE

H1. Project Sponsor: Tern and Plover Conservation Partnership

H2. Project Name: Common Sense Conservation of Endangered Species * = match, In-Kind or Supplies

BUDGET YEAR: July 2005 – June 2006

Column A	Column B	Column C	Column D	Column E	Column F
1. Source of Funds ▶	Nebraska Environmental Trust	University of Nebraska	Nebraska Game & Parks	State Wildlife Grants	Mining Cos. & other partners
2. Budget Category ▼					
3. Program Coordinator Salary		\	\	32,032	
4. Program Coordinator Benefits		\	\	8,239	
5. Outreach Coordinator Salary	28,972				
6. Outreach Coordinator Benefits	7,533				
7. Extension Wildlife Specialist, Non-game Bird Program Manager & Budget Manager		*9,800	*2,500		
8. Regional Wildlife Assistant				19,530	
9. Gravel Company Personnel and Equipment Time					*3,950
10. Volunteer Hours					*3,325
11. Deterrent Materials	1,500			1,550	
12. Educational Materials	1,000			300	*800
13. Office & Warehouse Space					
14. Office Supplies	250			350	
15. Computer Equipment					
16. Telephone, Fax, Copies & Mailing	925			1,625	
17. Books	100			50	



**The Nebraska
Environmental Trust**

preserving NATURAL NEBRASKA™ for future generations

NEBRASKA ENVIRONMENTAL TRUST FUND

H1. Project Sponsor: Tern and Plover Conservation Partnership

H2. Project Name: Common Sense Conservation of Endangered Species * = match, In-Kind or Supplies

Column A	Column B	Column C	Column D	Column E	Column F
1. Source of Funds ▶	Nebraska Environmental Trust	University of Nebraska	Nebraska Game & Parks	State Wildlife Grants	Mining Cos. & other partners
2. Budget Category ▼					
18. Video Camera Accessories & Video Cameras		*10,000		200	
19. Safety Training, Presentations, and Conferences	750	\	\	1,300	
20. Vehicle Use	750			2,170	
21. T-shirts and Hats for Volunteers	800				
22. Volunteer Recognition Picnic	400				
23. Nest Enclosures					
24. Fencing Materials			*10,000		
25. Repairs	50			100	
26. Laser Color Printer		*500			
27. Nesting Area Signs			*700		
28. Binoculars, scopes, and tripods	500	*2,900			
29. Airboat					
30. Techs				22,500	



The Nebraska Environmental Trust

preserving NATURAL NEBRASKA™ for future generations

NEBRASKA ENVIRONMENTAL TRUST FUND

H1. Project Sponsor: Tern and Plover Conservation Partnership

H2. Project Name: Common Sense Conservation of Endangered Species Supplies * = match, In-Kind or

BUDGET YEAR: July 2006 – June 2007

Column A	Column B	Column C	Column D	Column E	Column F	Column G
1. Source of Funds ►	Nebraska Environmental Trust	University of Nebraska	Nebraska Game & Parks	State Wildlife Grants	Mining Cos. & other partners	
2. Budget Category ▼						
3. Program Coordinator Salary	33,314	\	\	\		
4. Program Coordinator Benefits	8,662	\	\	\		
5. Outreach Coordinator Salary	30,131					
6. Outreach Coordinator Benefits	7,835					
7. Extension Wildlife Specialist, Non-game Bird Program Manager & Budget Manager		*9,800	*2,500			
8. Regional Wildlife Assistant				17,910		
9. Gravel Company Personnel and Equipment Time					*3,950	
10. Volunteer Hours					*3,392	
11. Deterrent Materials	800			150		
12. Educational Materials	500			100	*800	
13. Office & Warehouse Space						
14. Office Supplies	500			75		
15. Computer Equipment						
16. Telephone, Fax, Copies & Mailing	1,850			350		
17. Books	100			50		



**The Nebraska
Environmental Trust**

preserving NATURAL NEBRASKA™ for future generations

NEBRASKA ENVIRONMENTAL TRUST FUND

H1. Project Sponsor: Tern and Plover Conservation Partnership

H2. Project Name: Common Sense Conservation of Endangered Species Supplies * = match, In-Kind or

BUDGET YEAR: July 2006 – June 2007 Cont.

Column A	Column B	Column C	Column D	Column E	Column F	Column G
1. Source of Funds ►	Nebraska Environmental Trust	University of Nebraska	Nebraska Game & Parks	State Wildlife Grants	Mining Cos. & other partners	
2. Budget Category ▼						
18. Video Camera Accessories & Video Cameras	200	*10,000		\		
19. Safety Training, Presentations, and Conferences	1,500	\	\	500		
20. Vehicle Use	1,500			5,500		
21. T-shirts and Hats for Volunteers	800					
22. Volunteer Recognition Picnic	400					
23. Nest Enclosures	50					
24. Fencing Materials	400		*10,000	50		
25. Repairs	100			25		
26. Laser Color Printer		*500				
27. Nesting Area Signs			*700			
28. Binoculars, scopes, and tripods		*2,900				
29. Airboat						
30. Techs			7,000	5,290		



**The Nebraska
Environmental Trust**

preserving NATURAL NEBRASKA™ for future generations

NEBRASKA ENVIRONMENTAL TRUST FUND

H1. Project Sponsor: Tern and Plover Conservation Partnership

H2. Project Name: Common Sense Conservation of Endangered Species Supplies * = match, In-Kind or

BUDGET YEAR: July 2007 – June 2008

Column A	Column B	Column C	Column D	Column E	Column F	Column G
1. Source of Funds ▶	Nebraska Environmental Trust	University of Nebraska	Nebraska Game & Parks	State Wildlife Grants	Mining Cos. & other partners	
2. Budget Category ▼						
3. Program Coordinator Salary	34,647	\	\	\		
4. Program Coordinator Benefits	9,009	\	\	\		
5. Outreach Coordinator Salary	31,337					
6. Outreach Coordinator Benefits	8,148					
7. Extension Wildlife Specialist, Non-game Bird Program Manager & Budget Manager		*9,800	*2,500			
8. Regional Wildlife Assistant (Mining Company Money)					7,500	
9. Gravel Company Personnel and Equipment Time					*3,950	
10. Volunteer Hours					*3,458	
11. Deterrent Materials	800					
12. Educational Materials	500				*800	
13. Office & Warehouse Space			*3,960			
14. Office Supplies	500					
15. Computer Equipment		*9,000				
16. Telephone, Fax, Copies, and Mailings	1,850					
17. Books	100					



The Nebraska Environmental Trust

preserving NATURAL NEBRASKA™ for future generations

NEBRASKA ENVIRONMENTAL TRUST FUND

H1. Project Sponsor: Tern and Plover Conservation Partnership

H2. Project Name: Common Sense Conservation of Endangered Species Supplies * = match, In-Kind or

BUDGET YEAR: July 2007 – June 2008 Cont.

Column A	Column B	Column C	Column D	Column E	Column F	Column G
1. Source of Funds ▶	Nebraska Environmental Trust	University of Nebraska	Nebraska Game & Parks	State Wildlife Grants	Mining Cos. & other partners	
2. Budget Category ▼						
18. Video Camera Accessories & Video Cameras	200	*10,000	*6,000	\		
19. Safety Training, Presentations, and Conferences	1,500	\	\	\		
20. Vehicle Use	1,500		*6,000			
21. T-shirts and Hats for Volunteers	800					
22. Volunteer Recognition Picnic	400					
23. Nest Enclosures	50					
24. Fencing Materials	400		*15,000			
25. Repairs	100					
26. Laser Color Printer		*500				
27. Nesting Area Signs			*700			
28. Binoculars, scopes, and tripods		*2,900	*6,550			
39. Airboat			*7,000			
30. Techs (Lower Platte South NRD)					5,000	

The Tern and Plover Conservation Partnership Funding and Management Issues.



Papio-Missouri River NRD Mission

- To wisely conserve, manage, and enhance our wildlife resources for the good of all people residing in the District's boundaries.



Mission - Tern and Plover Partnership

- Studies and protects endangered least terns, threatened piping plovers and other birds within the Platte River system.
- Minimizes conflicts with private industry, reduce law enforcement involvement.
- Proactive, voluntary, and non-regulatory.



Partnership Background

- Started in 1999.
- We have 11 core organizations included in the partnership.

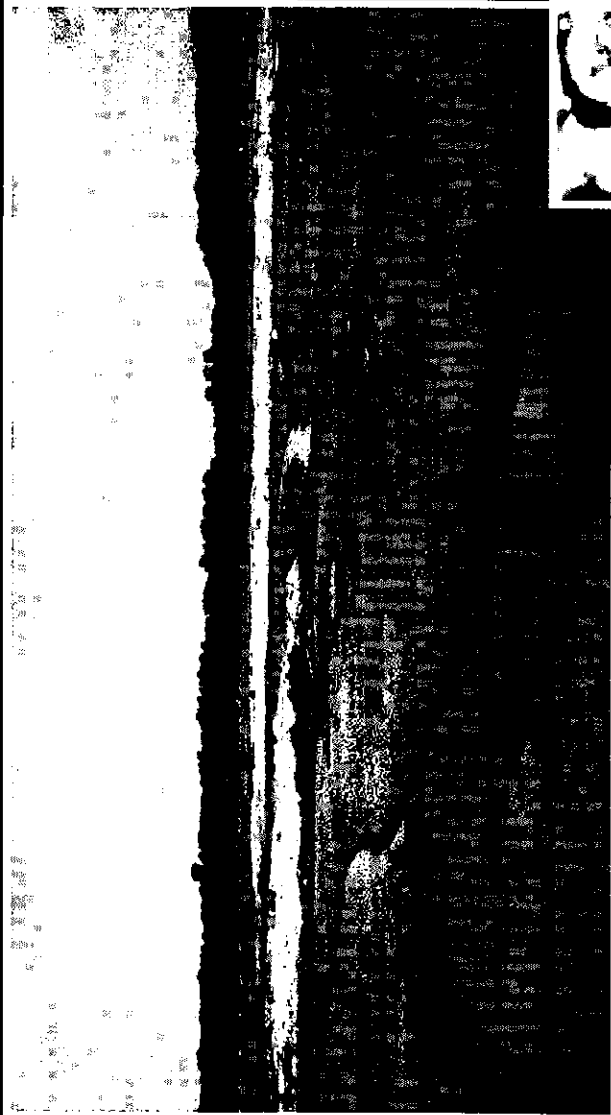
Partners

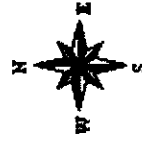
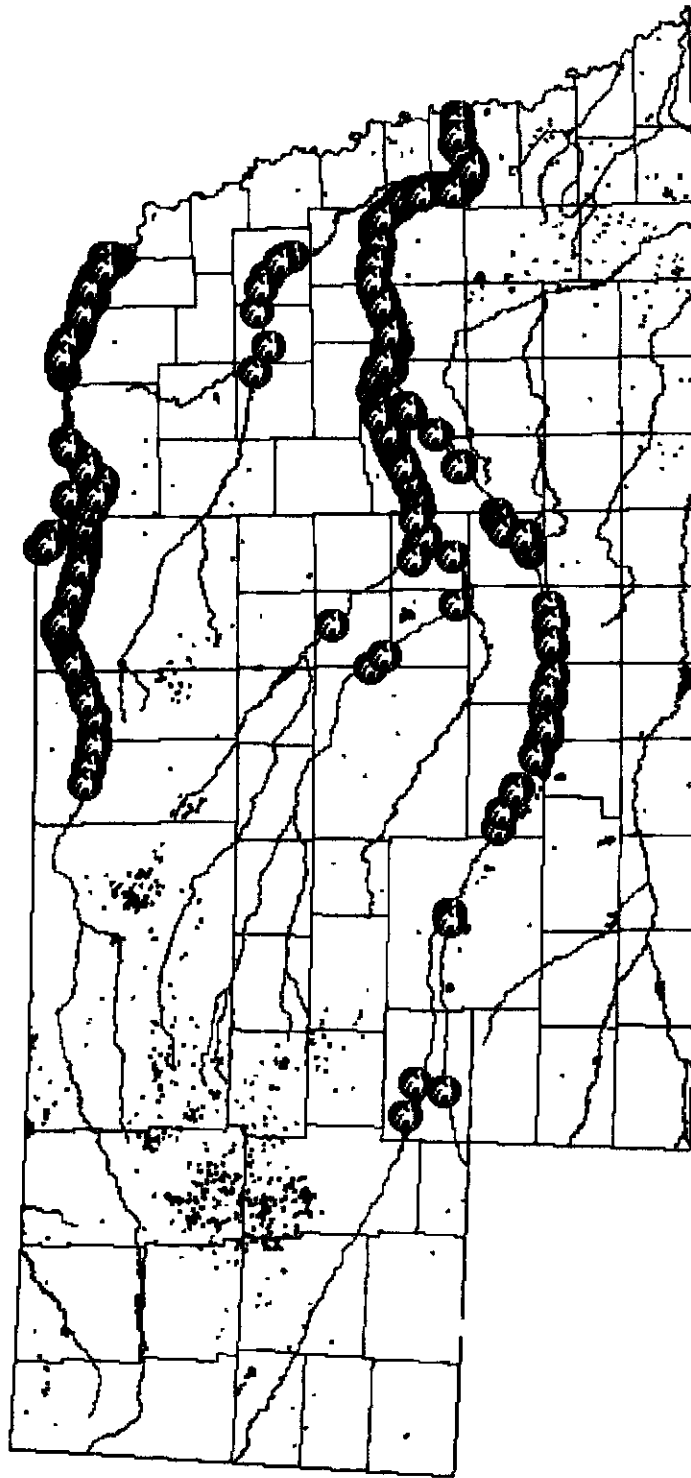
- Lyman Richey Corporation
- Western Sand and Gravel
- Mallard Sand and Gravel
- Overland Sand and Gravel
- Aips Gravel and Concrete
- Girl Scouts – Great Plains Council
- University of Nebraska – Lincoln
- NE Game and Parks Commission
- Non Game Checkoff Fund
- Nebraska Environmental Trust
- U.S. Fish and Wildlife Service

Volunteer Involvement

- > 300 volunteers total – educational, attitude and behavior changes.

	2006
Total # of Volunteers	58
# of new volunteers	38
Volunteer retention (from previous year)	75%
Volunteer Hours	295.5





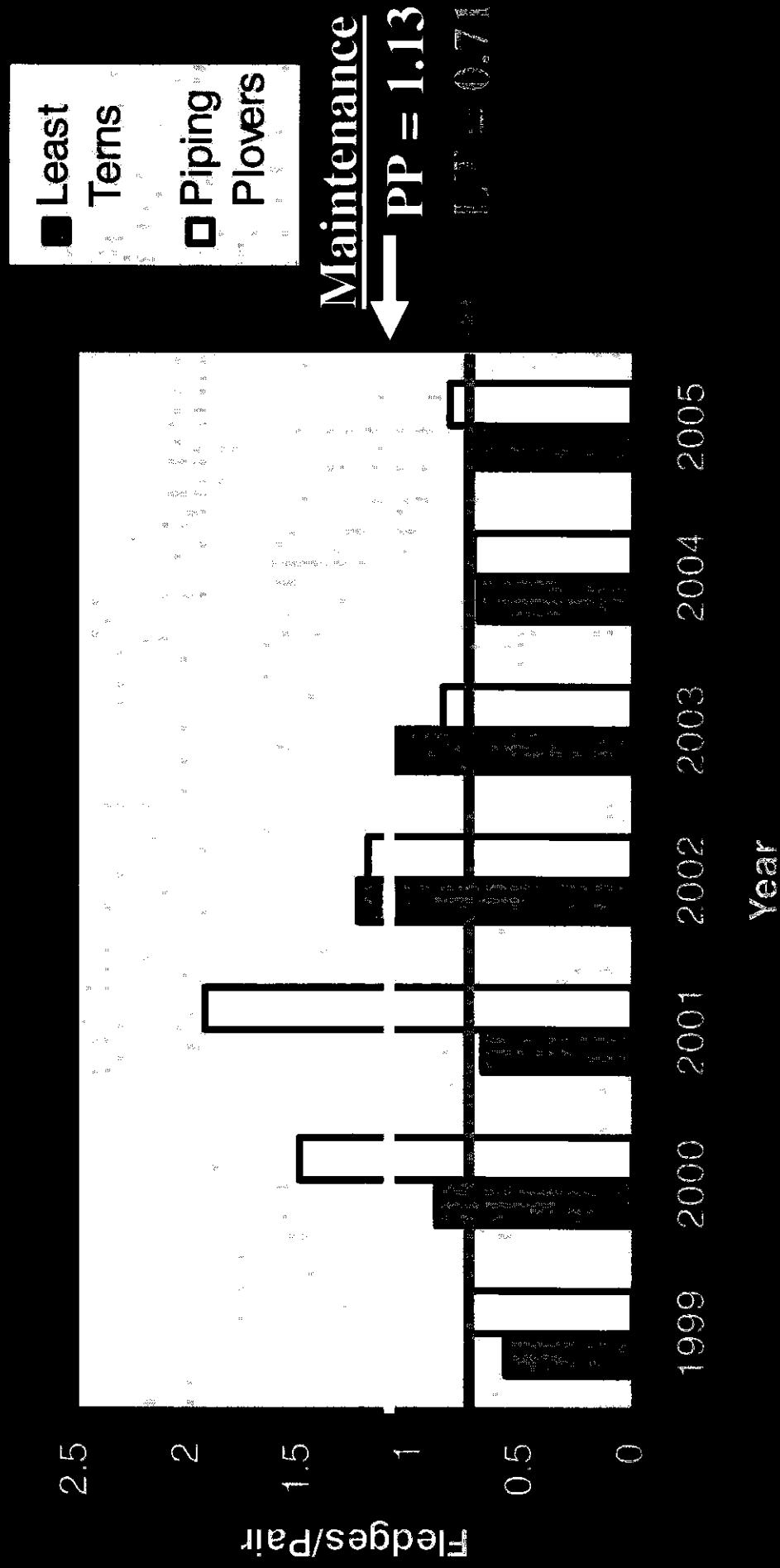
0 50 100 Miles



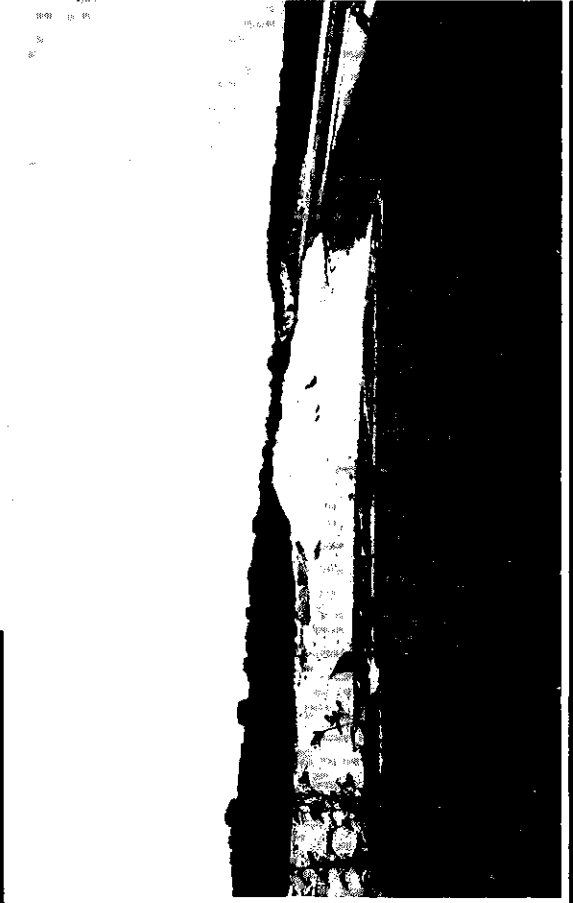
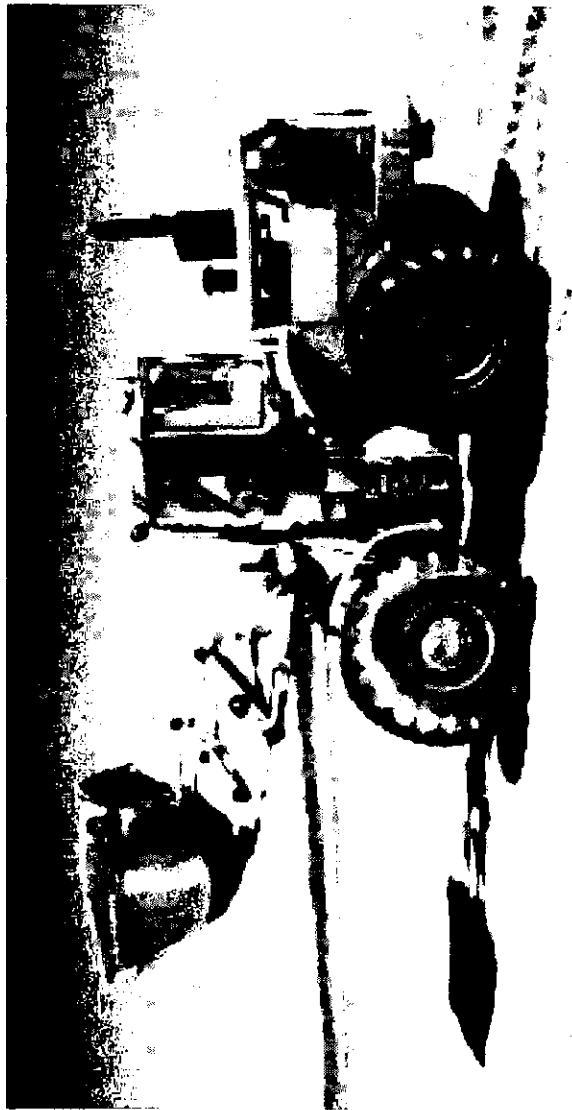
January 2003
Nebraska Game and Parks Commission
Nebraska Natural Heritage Program

Least Tern and Piping Plover Productivity - Gravel Mines

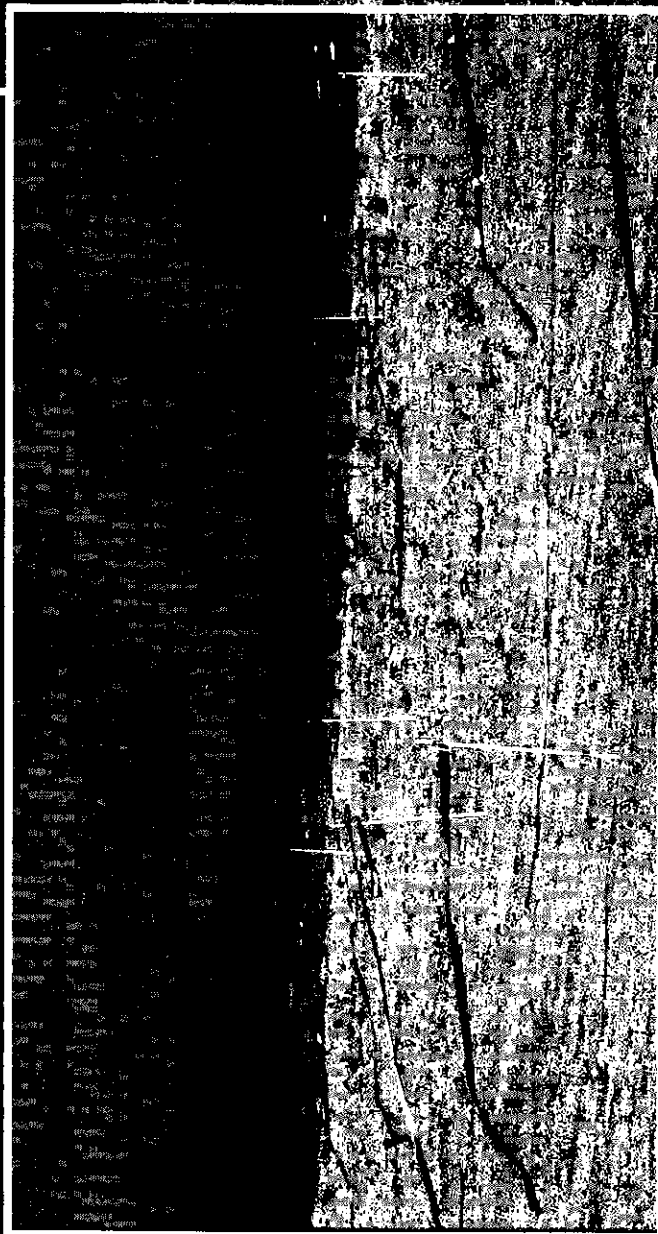
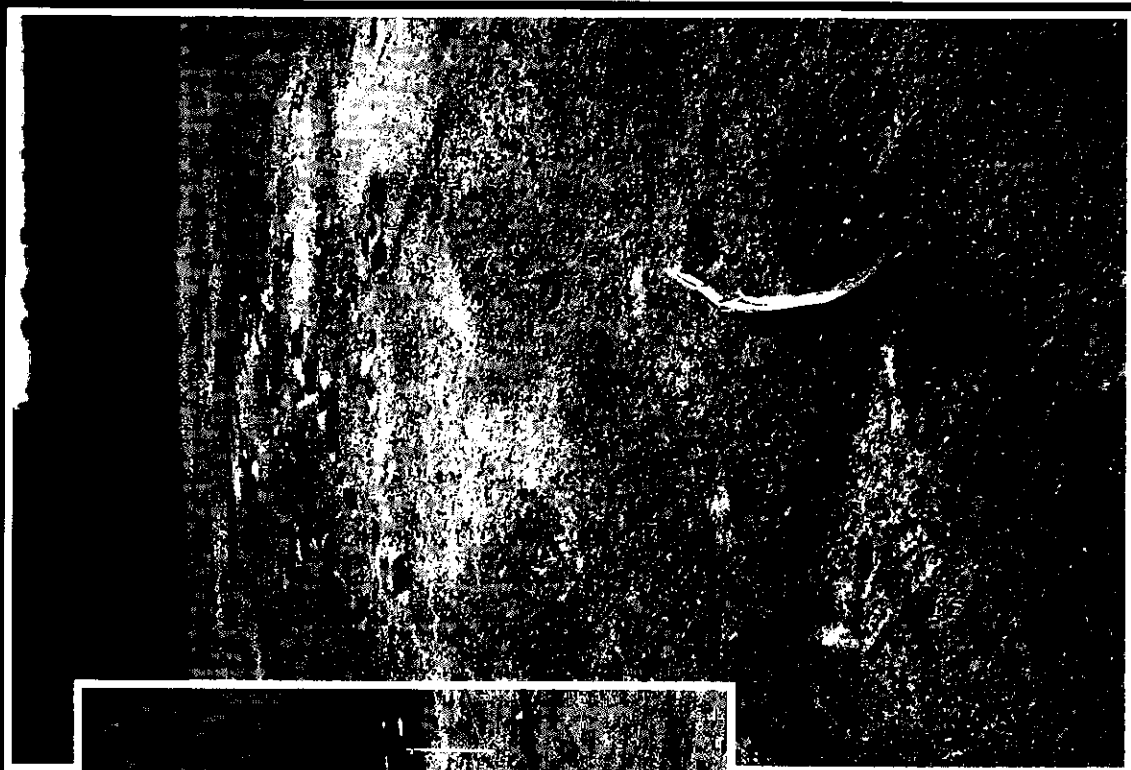
Lower Platte River (1999-2005)



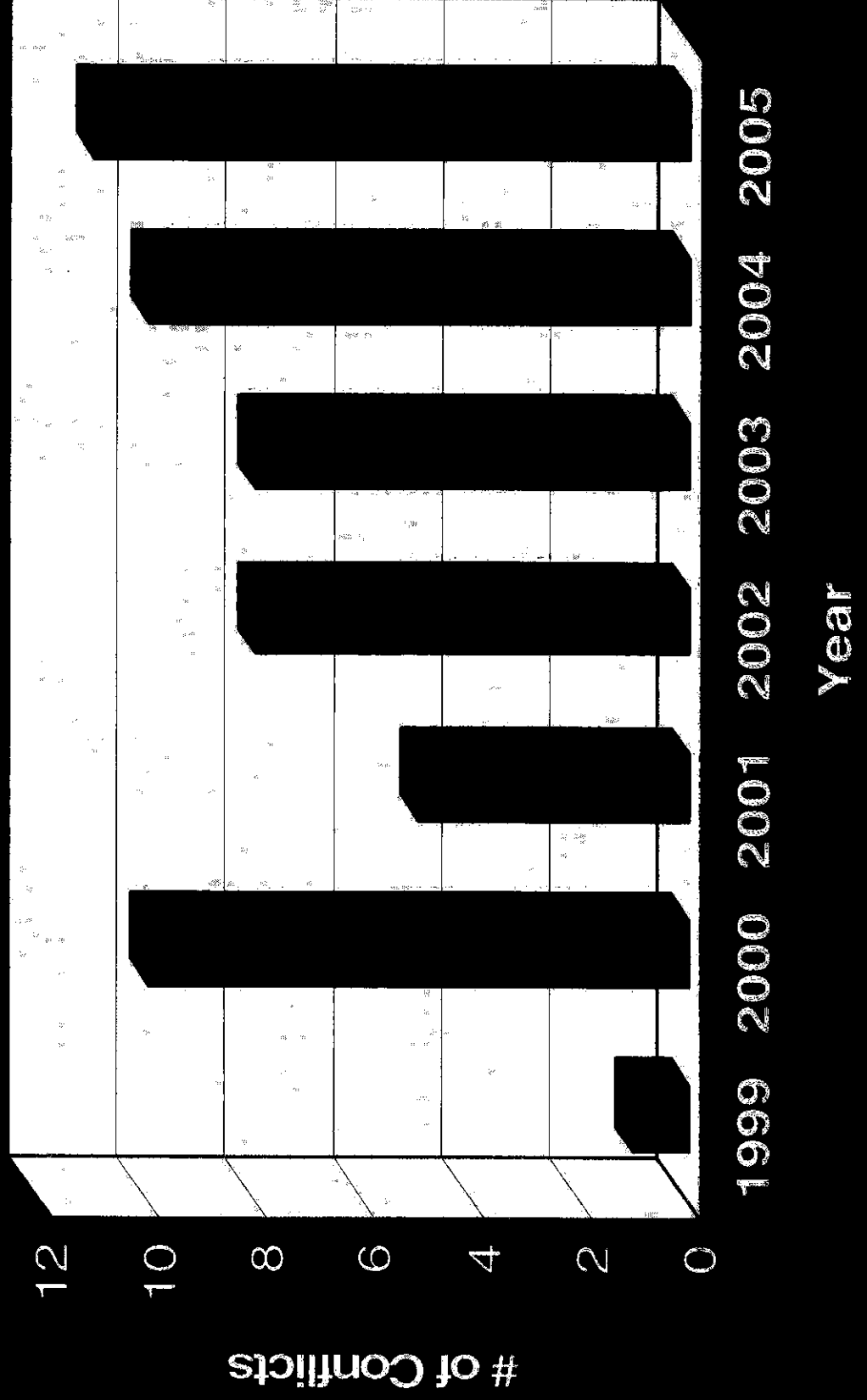
Examples of Conflicts



Deterrent/Attractant



Potential Conflicts Avoided at Sand and Gravel Mines



Program Costs (Salaries and Supplies)

- Program Coordinator
- Volunteer/Outreach Coordinator
- Regional Coordinator
- Seasonal Technicians (2)

Alternate Sources of Funding

SOURCE

STATUS

Industry	\$7,500 acquired, more funding pending.
University of NE	1% reduction in SNR Budget, not filling newly opened state funded positions.
NE Game and Parks	Pending.
Grants	Program not eligible for funding/ not funding during recession.

Future Directions

- Partnership Board
- Partnership Foundation
- Increase mine staff involvement in deterrent activities.
- Increase commitment of a few seasoned volunteers to help with monitoring.

Papio-Missouri River NRD Mission

- To wisely conserve, manage, and enhance our wildlife resources for the good of all people residing in the District's boundaries.

**PAPIO-MISSOURI RIVER
NATURAL
RESOURCES
DISTRICT**



8901 S. 154th Street
Omaha, NE 68138-3671
402-414-6223