



From the Coordinator...

Monthly Report for the Lower Platte River Corridor Alliance for the Month of June 2005

Rodney L. Verhoeff, Coordinator

Next LPRCA Quarterly Meeting

Next meeting will be **Tuesday, August 16th, 2005** at the **PMRNRD** in Omaha. The meeting will begin at **9:00 a.m.** and we hope to conclude in a couple of hours. We will be working on agenda items soon, so please contact the LPRCA if you have any ideas.

Airboat Tours Just to reiterate: We have scheduled two tours scheduled this year:

- (1) **July 15th** - *For Local Officials*. We will be touring the portion of the river from Fremont to Ashland. Details are still being worked out but topics include municipal well fields, W. Sarpy/Clear Creek project, pallid sturgeon study, LB 962 - Integrated Surface/Groundwater law, and others. This tour has been filled with 40 people signing on!
- (2) **July 29th** - *Open to Everyone*. This tour will be similar in format to past tours and will cover the Fremont to Schuyler area of the Platte River. Again details are still being worked out, but potential topics include river obstructions, geology/bluffs, LB 962, FEMA floodplain maps, Dept of Roads projects, and others. We are nearly full on this tour also. Both have a nice mix of local officials and resources managers as we had hoped for. We've had a great response from people willing to help with presentations and from the airboaters even in these expensive fuel times.

Cumulative Impact Study (CIS) the Scope of Work is completed and we are ready to head into Phase II - data acquisition and compilation. We also have been working to take advantage of some remaining federal funds from the COE to kick this study off. It has required a considerable amount of coordination with partners and amendments to interlocal agreements. The federal funding is only available until the end of the federal fiscal year (Sept 30, 2005) and not only needs to be obligated, but also the work must be completed. We hope to tackle two to three time steps in the project starting with the 2003 data and working back in time.

River Obstruction Project The interlocal agreement and services agreement required to undertake the pilot project at Hwy 50 have been signed and we are ready to go. Gerry Bowen of the PMRNRD also just informed me that we received out 404 permit from the COE for the project. We've also begun talks about cooperating with the NE Military Dept on removing obstructions near Camp Ashland.

Environmental Carrying Capacity Project Letters have been sent out to local planning/zoning boards to ask for assistance in collecting land use/comprehensive/zoning plans for the Corridor. Once collected, a summary and GIS will be created tabulating and mapping the types and locations of land use in various jurisdictions.

Educational Items LPRCA Craig Wacker and I have been looking into educational and promotional items such as a display, kiosks, billboard use, table tents (those little cardboard items that you find on tables at restaurants with info on them), and public service announcements. We hope to continue getting the word out about protecting the Lower Platte River.

Camp Ashland Levee Project I recently visited Camp Ashland to discuss the upcoming airboat tour and to see the progress on the levee project. They have nearly completed the floodwall and are working on the levee and hardening of the banks using rip-rap. This project ties in with the Western Sarpy-Clear Creek Project.

PACE The PACE group met on June 22nd in Columbus and discussed a possible location near North Bend where the landowner is looking for assistance from the group to develop a reclamation plan for a newly-opened sand/gravel pit. A site visit was scheduled for July 8th.

Preliminary Airboat Tour I took a preliminary airboat tour on June 16th to scout out stops for the July 15th and 29th tours. We witnessed a deer run across and fall into the river (see photo). We traveled from the Leshara area up to Schuyler. On the way back, the river had risen high enough that we were unable to get under a low RR bridge near Hwy 64 and had to get out further upstream. This led to the idea of discussing the impact of Loup Canal discharges into the Platte River for the July 29th airboat tour.



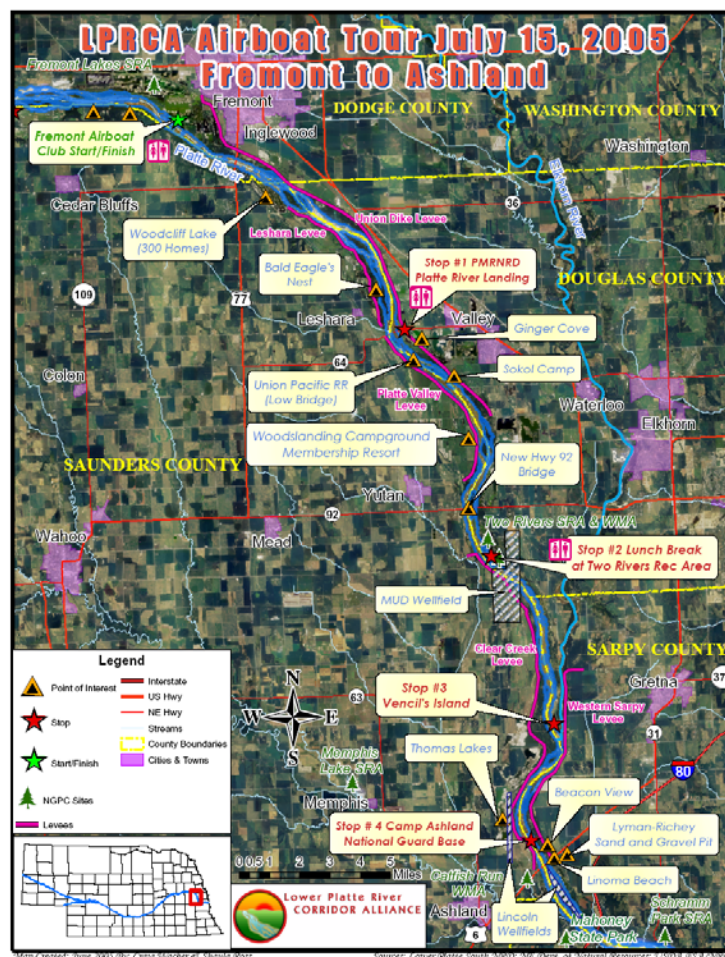
Preliminary Airboat Tour

A few more photos from the preliminary tour:



Airboat Tour Map

Below is the map for the July 15th, 2005 airboat tour:



Upcoming/Recent Meetings and Activities

- **LPNNRD Board Meeting** - Monday, July 11th, 2005 * 7:00 p.m. - LPNNRD Office - 311 Commercial Park in Wahoo
- **PMNRRD Board Meeting** - Thursday, July 14th, 2005 * 8:00 p.m. - PMNRRD Office at the Nat Res Center -Chalco Hills Rec Area - Omaha
- **LPSNRD Board Meeting** - Wednesday, July 20th, 2005 * 7:00 p.m. - LPSNRD Office - Lincoln @ 285 S. 68th Street Place, Suite 200 - - The former Gallup Bldg near Shopko.
- **LPRCA Quarterly Meeting** - Tues, August 16th, 2005 * 9:00 a.m. - PMNRRD Office at the Nat Res Center -Chalco Hills Rec Area - Omaha