

MEMORANDUM

TO: Programs, Projects and Operations Subcommittee

FROM: Martin P. Cleveland

SUBJECT: West Branch Channel Project (86th to Giles Road – Right Bank)
Tributaries Low Water Crossing Project Bids

DATE: May 31, 2007

Attached is a location map and typical plan drawings for the referenced Low Water Crossing project. The work consists of installing two separate reinforced concrete box culverts along the right bank (South side) of the West Branch Papillion Creek, between 86th Street and Giles Road in Sarpy County, west of Papillion, NE. The box culverts vary in size from 9 ft. by 7 ft. to twin 10 ft. by 8 ft. and from 47 to 48 ft. in length. The work consists of constructing these box culverts and related ramps from channel project access road to berm level. These box culverts will provide access across two tributaries for channel maintenance and future trail. The box culverts (low water crossing) will carry the 2 year frequency flood flows and are designed to handle over-topping by larger storm events via articulated concrete block slope paving. Work is to be completed by September 15, 2007.

A similar low water crossing project (Sites WW3, 4, 5 and 6) was bid in January 2007 and presently under construction by M.E. Collins.

A bid summary for the low water crossing project is as follows:

	Base Bid-(WW1 & 2)
Consultant's Estimate	\$308,874.20
JMN Construction	\$290,150.10
M.E. Collins Contracting	\$251,660.12

The apparent low bidder is ME Collins Contracting Company, Inc. with a base bid of: \$251,660.12.

Based on the estimated quantities, the total project cost would be \$251,660.12. The Consultant's Opinion of Probable Construction Cost by Ehrhart Griffin and Associates for the project is \$308,874.20

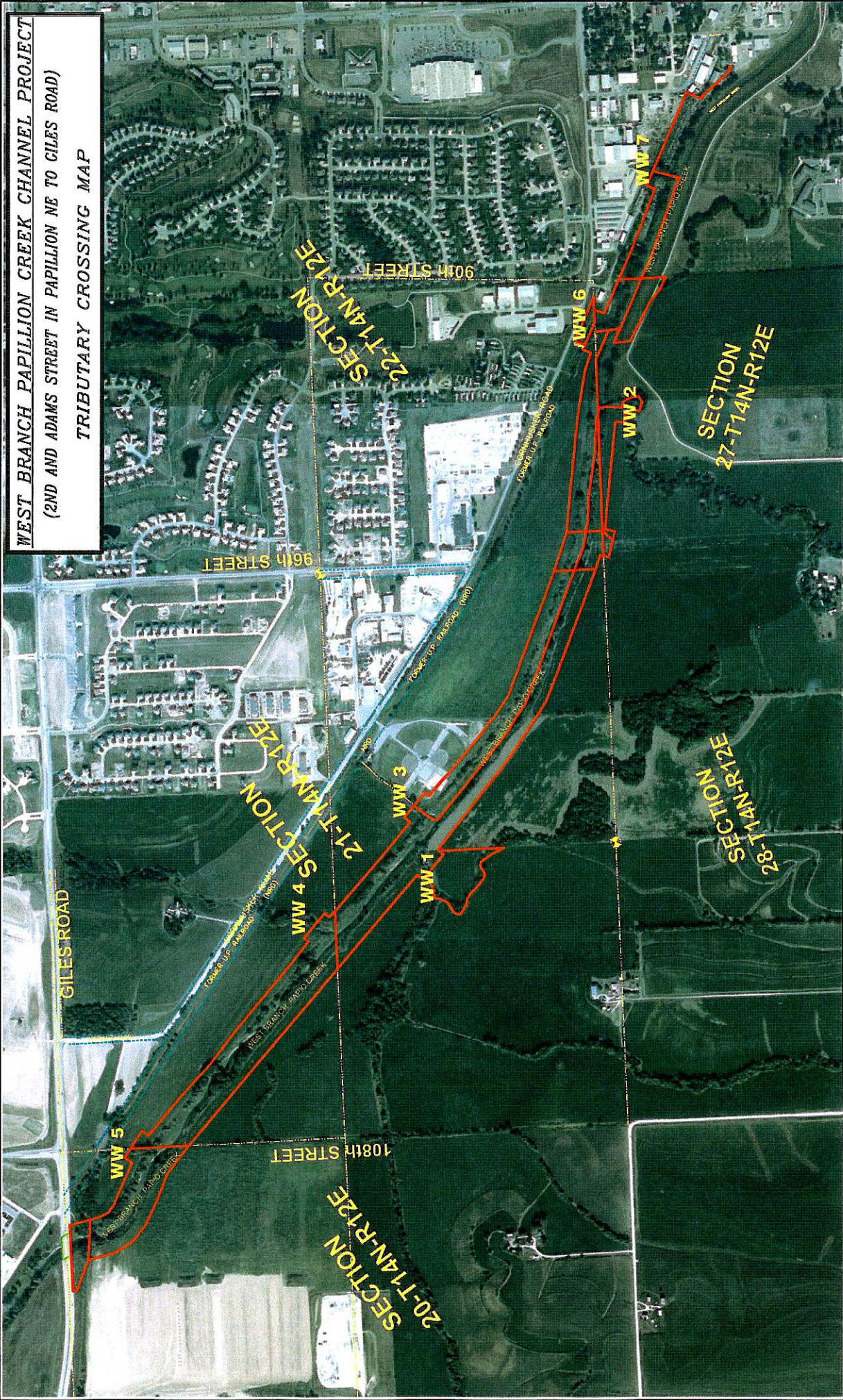
This work will be funded via funds included in West Branch Channel Project Contract Work (Account 01 03 – 04 4477). The proposed Fiscal Year 2008 budget includes \$624,000 in this account.

It is Management's recommendation that the Subcommittee recommend to the Board of Directors that the General Manager be authorized to execute a contract for West Branch Channel Project tributaries low water crossing project with ME Collins Contracting Company, Inc. for their total base bid of \$251,660.12, which includes constructing low water crossings at tributaries WW 1 and 2.

WEST BRANCH CHANNEL
 LOW WATER CROSSINGS SOUTH BANK
 BID OPENING - MAY 30, 2007

No.	Item Description	ENGINEER'S ESTIMATE		M.E. COLLINS		JMN CONSTRUCTION			
		Estimated	Total	Unit Price	Total	Unit Price	Total		
		Quantity	Unit						
1	CLEARING AND GRUBBING - GENERAL	1	LS	\$3,500.00	\$3,500.00	\$1,600.00	\$1,600.00	\$10,000.00	\$10,000.00
2	EARTHWORK (EMBANKMENT) - (ESTABLISHED QUANTITY)	2,685	CY	\$4.00	\$10,740.00	\$4.80	\$12,888.00	\$3.00	\$8,055.00
3	EARTHWORK (ON-SITE HAUL) - (ESTABLISHED QUANTITY)	6,400	CY	\$8.00	\$38,400.00	\$4.80	\$30,720.00	\$3.00	\$19,200.00
4	TOPSOIL REMOVAL	10,663	SY	\$0.20	\$2,132.60	\$0.32	\$3,412.16	\$0.25	\$2,665.75
5	TOPSOIL PLACEMENT	10,663	SY	\$0.20	\$2,132.60	\$0.32	\$3,412.16	\$0.45	\$4,798.35
6	SUBGRADE PREPARATION	347	SY	\$2.00	\$694.00	\$2.00	\$694.00	\$2.00	\$694.00
7	8" CONCRETE PAVEMENT - TYPE L65	347	SY	\$70.00	\$24,290.00	\$35.90	\$12,457.30	\$36.00	\$12,492.00
8	CRUSHED ROCK FOR SURFACING (6" THICK)	1,201	TON	\$16.00	\$18,015.00	\$21.00	\$25,221.00	\$15.00	\$18,015.00
9	3'x3'x12' GABION BASKET WITH GEOTEXTILE FABRIC	6	EA	\$800.00	\$4,800.00	\$919.90	\$5,519.40	\$850.00	\$5,100.00
10	9" REVET MATTRESS WITH GEOTEXTILE FABRIC	98	SY	\$90.00	\$8,910.00	\$85.90	\$8,504.10	\$80.00	\$7,920.00
11	CONSTRUCT TWIN 10' X 8' REINFORCED CONCRETE BOX CULVERT W/ WING WALLS	48	LF	\$850.00	\$40,800.00	\$1,135.00	\$54,480.00	\$1,500.00	\$72,000.00
12	CONSTRUCT 9' X 7' REINFORCED CONCRETE BOX CULVERT W/ WING WALLS	47	LF	\$720.00	\$33,840.00	\$720.00	\$33,840.00	\$850.00	\$39,950.00
13	ARTICULATED CONCRETE BLOCK REVETMENT	6,400	SF	\$15.00	\$96,000.00	\$7.57	\$48,448.00	\$7.50	\$48,000.00
14	SEEDING W/ MULCHING AND CRIMPING	3.4	AC	\$2,500.00	\$8,500.00	\$804.00	\$2,733.60	\$2,850.00	\$9,690.00
15	CONSTRUCT CONCRETE HEADER	56	LF	\$20.00	\$1,120.00	\$5.90	\$330.40	\$20.00	\$1,120.00
16	CONSTRUCT SILT FENCE	2,000	LF	\$3.00	\$6,000.00	\$1.67	\$3,340.00	\$3.00	\$6,000.00
17	REMOVE SILT FENCE	2,000	LF	\$3.50	\$7,000.00	\$0.75	\$1,500.00	\$0.50	\$1,000.00
18	REMOVE AND SALVAGE CULVERT PIPE	2	EA	\$1,000.00	\$2,000.00	\$1,280.00	\$2,560.00	\$11,725.00	\$23,450.00
Total Bid					\$308,874.20		\$251,660.12		\$290,150.10

WEST BRANCH PAPILLION CREEK CHANNEL PROJECT
 (2ND AND ADAMS STREET IN PAPILLION NE TO GILES ROAD)
 TRIBUTARY CROSSING MAP

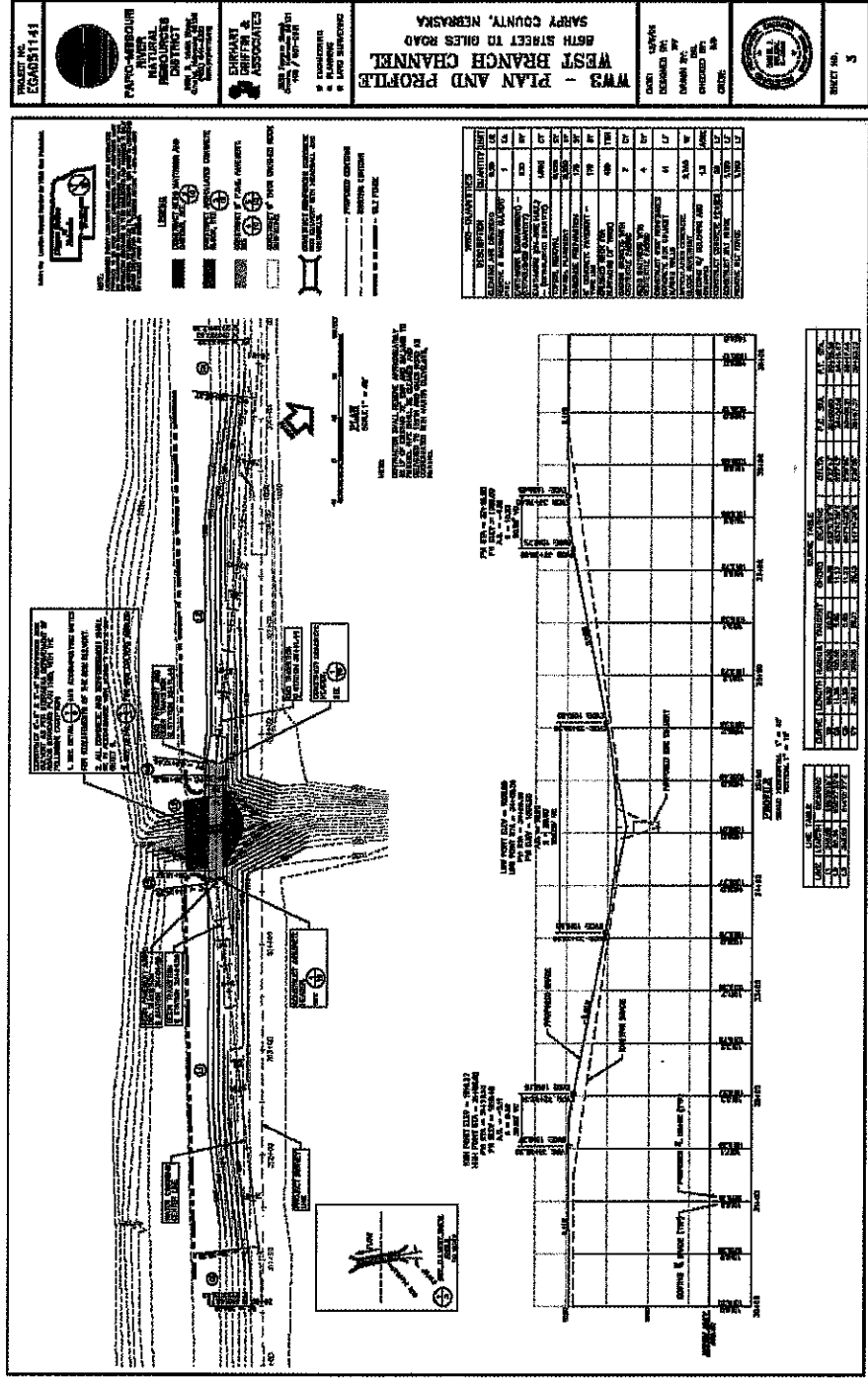


DESIGNED BY: D.R. SMITH	PROJECT NO.: 530
CHECKED BY: B.T.	DATE: 12/07/08
APPROVED BY: B.T.	WEST BRANCH ROW TRACT MAP
	SHEET NO. 1 OF 1

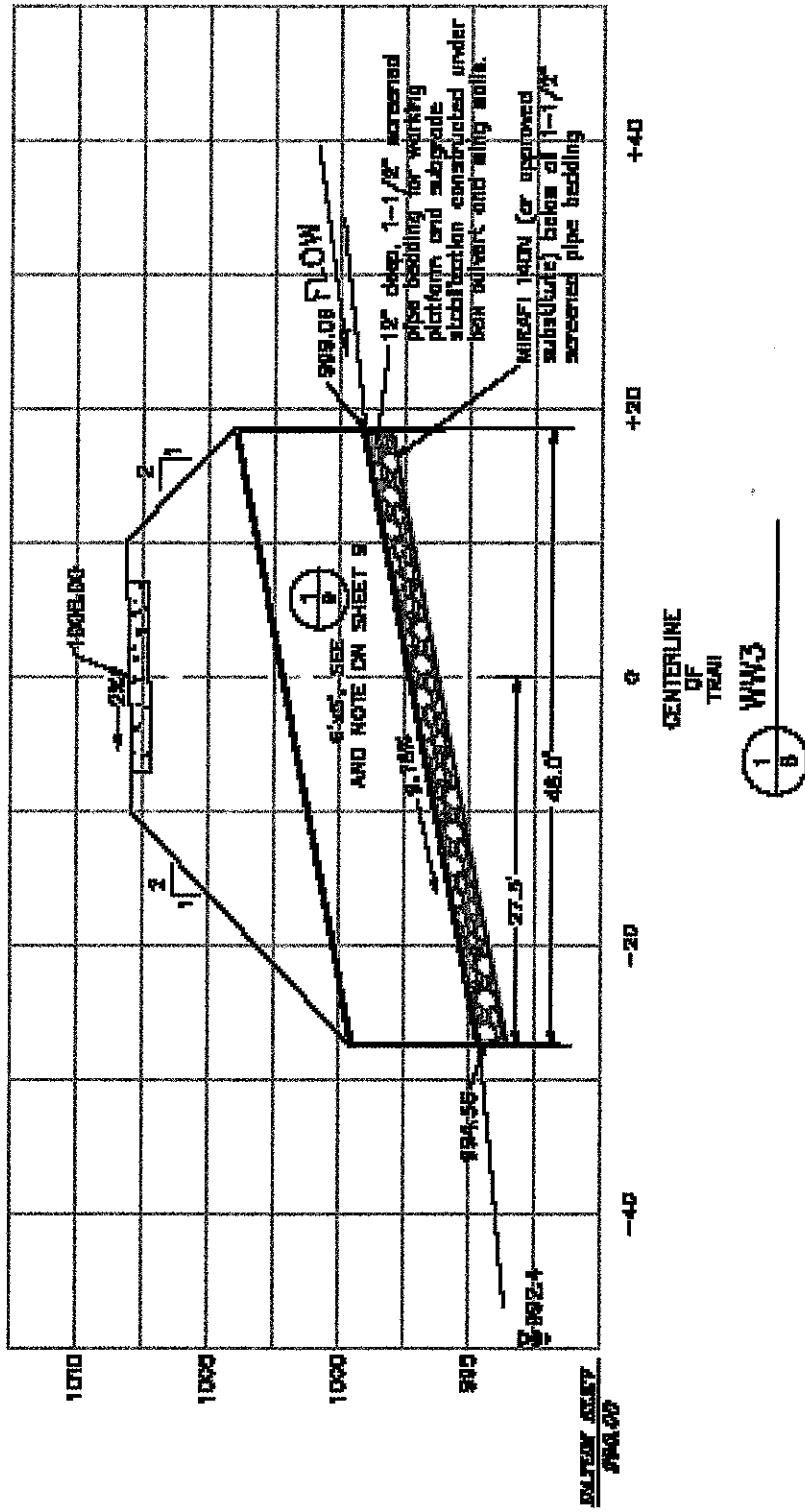
PAPIO-MISSOURI RIVER NATURAL RESOURCES DISTRICT



Typical Crossing Plan & Profile (WW3)



Typical Profile (WW3)



Articulated Block Detail

